

À des fins de recherche uniquement

Anticorps Monoclonal anti-PSAP

Numéro de catalogue: 66473-1-Ig **Phare**



Informations de base

Numéro de catalogue: 66473-1-Ig	Numéro d'acquisition GenBank: BC001503	Méthode de purification: Purification par protéine G
Taille: 150ul, Concentration: 1300 µg/ml by Nanodrop and 987 µg/ml by Bradford method using BSA as the standard;	Identification du gène (NCBI): 5660	CloneNo.: 2F11B2
Hôte: Mouse	Nom complet: prosaposin	Dilutions recommandées: WB 1:2500-1:10000 IHC 1:150-1:600 IF 1:200-1:800
Isotype: IgG1	MW calculé 58 kDa	
Immunogen Catalog Number: AG1194	MW observés: 70 kDa	

Applications

Applications testées:

IF, IHC, WB, ELISA

Spécificité de l'espèce:

Humain

Remarque-IHC: il est suggéré de démasquer l'antigène avec un tampon de TE buffer pH 9,0; (*) À défaut, le démasquage de l'antigène peut être effectué avec un tampon citrate pH 6,0.

Contrôles positifs:

WB : tissu de lait humain, cellules HeLa, cellules HepG2, cellules PC-3, lait humain

IHC : tissu de cancer de la prostate humain,

IF : tissu de cancer de la prostate humain,

Informations générales

Stockage

Stockage:

Stocker à -20°C. Stable pendant un an après l'expédition.

Tampon de stockage:

PBS avec azoture de sodium à 0,02 % et glycérol à 50 % pH 7,3

L'aliquotage n'est pas nécessaire pour le stockage à -20C

***** Les 20ul contiennent 0,1% de BSA.**

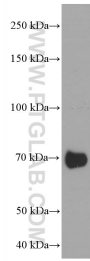
For technical support and original validation data for this product please contact:

T: 1 (888) 4PTGLAB (1-888-478-4522) (toll free
in USA), or 1(312) 455-8498 (outside USA)

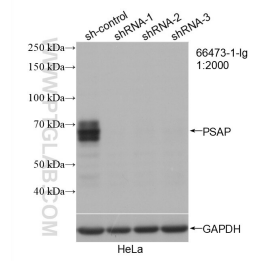
E: proteintech@ptglab.com
W: ptglab.com

This product is exclusively available under Proteintech Group brand and is not available to purchase from any other manufacturer.

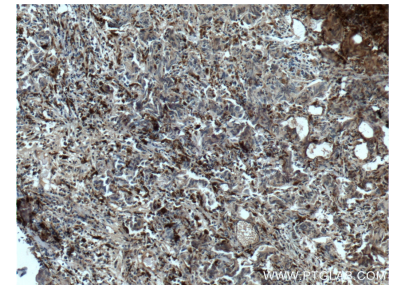
Données de validation sélectionnées



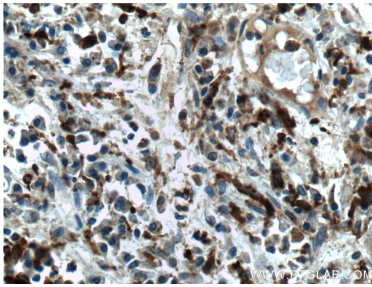
human milk were subjected to SDS PAGE followed by western blot with 66473-1-Ig (PSAP antibody) at dilution of 1:5000 incubated at room temperature for 1.5 hours.



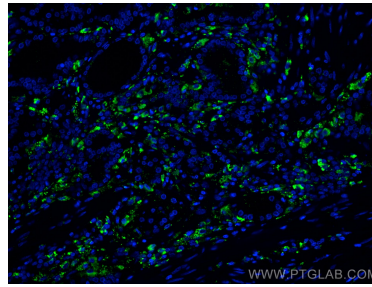
WB result of PSAP antibody (66473-1-Ig; 1:2000; incubated at room temperature for 1.5 hours) with sh-Control and sh-PSAP transfected HeLa cells.



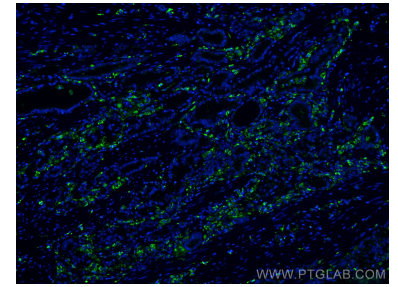
Immunohistochemical analysis of paraffin-embedded human prostate cancer tissue slide using 66473-1-Ig (PSAP antibody) at dilution of 1:300 (under 10x lens. Heat mediated antigen retrieval with Tris-EDTA buffer (pH 9.0).



Immunohistochemical analysis of paraffin-embedded human prostate cancer tissue slide using 66473-1-Ig (PSAP antibody) at dilution of 1:300 (under 40x lens. Heat mediated antigen retrieval with Tris-EDTA buffer (pH 9.0).



Immunofluorescent analysis of (4% PFA) fixed human prostate cancer tissue using PSAP antibody (66473-1-Ig, Clone: 2F11B2) at dilution of 1:400 and CoraLite®488-Conjugated AffiniPure Goat Anti-Mouse IgG(H+L).



Immunofluorescent analysis of (4% PFA) fixed human prostate cancer tissue using PSAP antibody (66473-1-Ig, Clone: 2F11B2) at dilution of 1:400 and CoraLite®488-Conjugated AffiniPure Goat Anti-Mouse IgG(H+L).