

À des fins de recherche uniquement

Anticorps Monoclonal anti-SOD2

Numéro de catalogue: 66474-1-Ig

Phare

28 Publications



Informations de base

Numéro de catalogue: 66474-1-Ig	Numéro d'acquisition GenBank: BC016934	Méthode de purification: Purification par protéine A
Taille: 150ul , Concentration: 1500 µg/ml by Nanodrop and 1000 µg/ml by Bradford method using BSA as the standard;	Identification du gène (NCBI): 6648	CloneNo.: 3A6C2
Hôte: Mouse	Nom complet: superoxide dismutase 2, mitochondrial	Dilutions recommandées: WB 1:5000-1:50000 IHC 1:2500-1:10000 IF 1:200-1:800
Isotype: IgG2a	MW calculé: 25 kDa	
Immunogen Catalog Number: AG21388	MW observés: 25 kDa	

Applications

Applications testées:
FC, IF, IHC, WB, ELISA

Demandes citées:
CoIP, IF, IHC, WB

Spécificité de l'espèce:
Humain, porc, rat, souris

Espèces citées:
Humain, porc, rat, souris

Remarque-IHC: il est suggéré de démasquer l'antigène avec un tampon de TE buffer pH 9,0; (*) A défaut, 'le démasquage de l'antigène peut être effectué avec un tampon citrate pH 6,0.

Contrôles positifs:

WB : cellules U2OS, cellules HeLa, cellules RAW 264.7, cellules ROS1728, tissu cérébral de porc, tissu cérébral de rat, tissu cérébral de souris

IHC : tissu de cancer du foie humain, tissu de cancer du côlon humain, tissu de cancer du pancréas humain, tissu hépatique de rat, tissu hépatique de souris, tissu hépatique humain

IF : cellules HUVEC,

Informations générales

SOD2(superoxide dismutase 2, mitochondrial) is also named as IPOB, MNSOD, SODM, Mn-SOD and belongs to the iron/manganese superoxide dismutase family. It is a marker of mitochondria, which is restricted to the perinuclear area in a cell with aggregate formation of mutant SOD1(PMID:12659845). It functions as the first line of antioxidant defense against highly reactive superoxide radicals and it appears to be early predictors for survival in septic patients with with MIF(PMID:20863520). It has 2 isoforms with the molecular weight of 25 kDa and 21 kDa.

Publications notables

Autrice	Pubmed ID	Journal	Application
Lupeng Chen	34603279	Front Immunol	WB
Ling Li	34532973	J Cell Mol Med	WB
Fan Yu	31669212	J Control Release	WB,IF

Stockage

Stockage:

Stocker à -20°C. Stable pendant un an après l'expédition.

Tampon de stockage:

PBS avec azoture de sodium à 0,02 % et glycérol à 50 % pH 7,3

L'aliquotage n'est pas nécessaire pour le stockage à -20C

*** Les 20ul contiennent 0,1% de BSA.

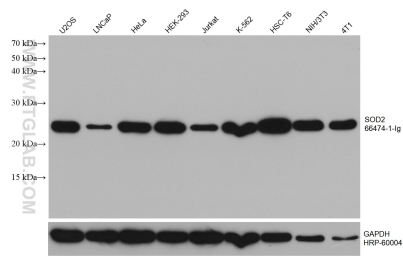
For technical support and original validation data for this product please contact:

T: 1 (888) 4PTGLAB (1-888-478-4522) (toll free in USA), or 1(312) 455-8498 (outside USA)

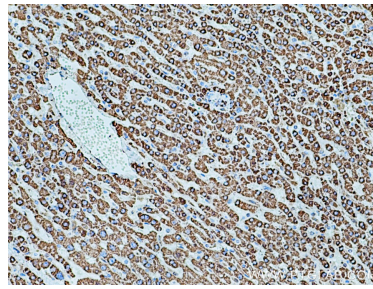
E: proteintech@ptglab.com
W: ptglab.com

This product is exclusively available under Proteintech Group brand and is not available to purchase from any other manufacturer.

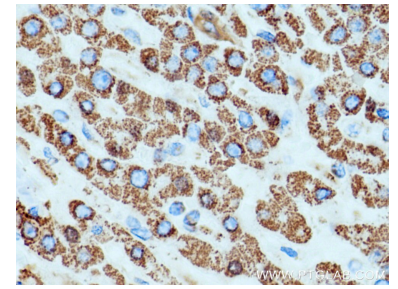
Données de validation sélectionnées



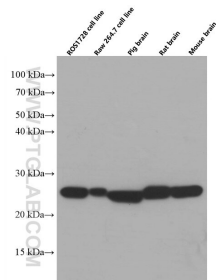
Various lysates were subjected to SDS PAGE followed by western blot with 66474-1-Ig (SOD2 antibody) at dilution of 1:20000 incubated at room temperature for 1.5 hours. The membrane was stripped and reblotted with HRP-conjugated GAPDH Monoclonal antibody (HRP-60004) as loading control.



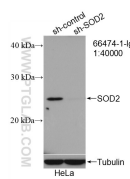
Immunohistochemical analysis of paraffin-embedded human liver cancer tissue slide using 66474-1-Ig (SOD2 antibody) at dilution of 1:5000 (under 10x lens). Heat mediated antigen retrieval with Tris-EDTA buffer (pH 9.0).



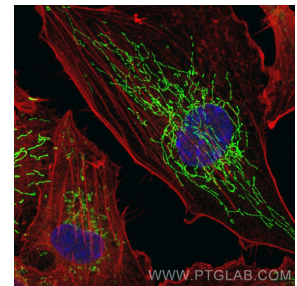
Immunohistochemical analysis of paraffin-embedded human liver cancer tissue slide using 66474-1-Ig (SOD2 antibody) at dilution of 1:5000 (under 40x lens). Heat mediated antigen retrieval with Tris-EDTA buffer (pH 9.0).



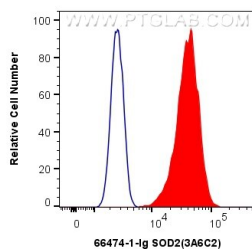
Various lysates were subjected to SDS PAGE followed by western blot with 66474-1-Ig (SOD2 antibody) at dilution of 1:20000 incubated at room temperature for 1.5 hours.



WB result of SOD2 antibody (66474-1-Ig; 1:40000; incubated at room temperature for 1.5 hours) with sh-Control and sh-SOD2 transfected HeLa cells.



Immunofluorescent analysis of (-20°C Methanol) fixed HUVEC cells using SOD2 antibody (66474-1-Ig, Clone: 3A6C2) at dilution of 1:400 and CoraLite@488-Conjugated AffiniPure Goat Anti-Mouse IgG(H+L).



1X10⁶ HeLa cells were intracellularly stained with 0.4 ug Anti-Human SOD2 (66474-1-Ig, Clone:3A6C2) and CoraLite@488-Conjugated AffiniPure Goat Anti-Mouse IgG(H+L) at dilution 1:1000 (red), or 0.4 ug Mouse IgG2a Isotype Control (C1.18.4) (65208-1-Ig, Clone: C1.18.4) (blue). Cells were fixed with 4% PFA and permeabilized with Flow Cytometry Perm Buffer (PF00011-C).