

À des fins de recherche uniquement

# Anticorps Monoclonal anti-Hemopexin



Numéro de catalogue: 66479-1-Ig **1 Publications**

## Informations de base

Numéro de catalogue: 66479-1-Ig	Numéro d'acquisition GenBank: BC005395	Méthode de purification: Purification par protéine G
Taille: 150ul , Concentration: 1700 µg/ml by Nanodrop and 1000 µg/ml by Bradford method using BSA as the standard;	Identification du gène (NCBI): 3263	CloneNo.: 3A9D6
Hôte: Mouse	Nom complet: hemopexin	Dilutions recommandées: WB 1:5000-1:40000 IHC 1:250-1:1000 IF 1:200-1:800
Isotype: IgG1	MW calculé: 254 aa, 29 kDa	
Immunogen Catalog Number: AG8533	MW observés: 65-75 kDa	

## Applications

Applications testées:  
FC, IF, IHC, WB, ELISA

Demandes citées:  
IF

Spécificité de l'espèce:  
Humain, porc, rat

Espèces citées:  
Humain

**Remarque-IHC: il est suggéré de démasquer l'antigène avec un tampon de TE buffer pH 9,0; (\*) A défaut, 'le démasquage de l'antigène peut être 'effectué avec un tampon citrate pH 6,0.**

Contrôles positifs:

WB : tissu plasmatique humain, tissu placentaire humain, tissu plasmatique de porc, tissu sérique de rat  
IHC : tissu hépatique humain, tissu placentaire humain  
IF : tissu de cancer du foie humain,

## Informations générales

Hemopexin (HPX) is the plasma protein responsible for scavenging heme, thus preventing heme-mediated oxidative stress and heme-bound iron loss. In addition, hemopexin blocks heme activation of immune receptors and vascular inflammatory processes. It is mainly expressed in liver, the synthesis of which is induced after inflammation. Alterations of plasma hemopexin level have been linked to disorders like atherosclerosis and inflammatory diseases.

## Publications notables

Autrice	Pubmed ID	Journal	Application
Emna Ouni	35341935	Matrix Biol	IF

## Stockage

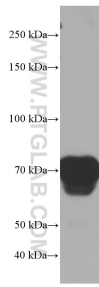
Stockage:  
Stocker à -20°C. Stable pendant un an après l'expédition.  
Tampon de stockage:  
PBS avec azoture de sodium à 0,02 % et glycérol à 50 % pH 7,3  
L'aliquotage n'est pas nécessaire pour le stockage à -20C

\*\*\* Les 20ul contiennent 0,1% de BSA.

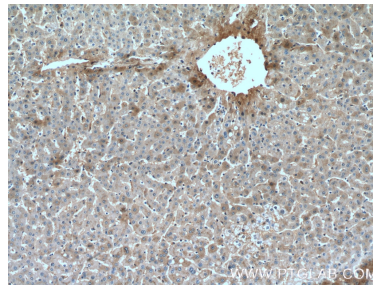
For technical support and original validation data for this product please contact:  
T: 1 (888) 4PTGLAB (1-888-478-4522) (toll free in USA), or 1(312) 455-8498 (outside USA)  
E: proteintech@ptglab.com  
W: ptglab.com

This product is exclusively available under Proteintech Group brand and is not available to purchase from any other manufacturer.

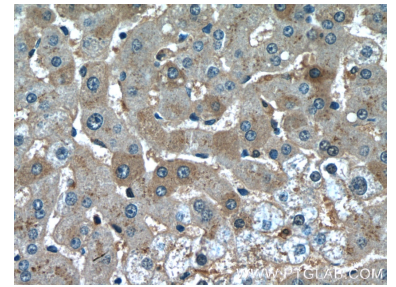
## Données de validation sélectionnées



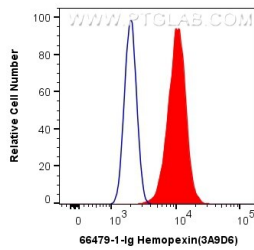
0.7  $\mu$ L human plasma was subjected to SDS PAGE followed by western blot with 66479-1-Ig (Hemopexin antibody) at dilution of 1:20000 incubated at room temperature for 1.5 hours.



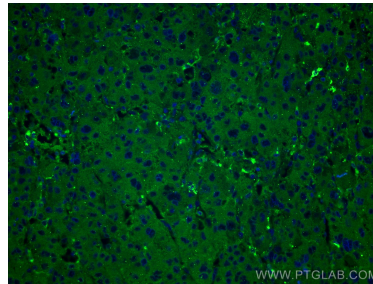
Immunohistochemical analysis of paraffin-embedded human liver tissue slide using 66479-1-Ig (Hemopexin antibody) at dilution of 1:500 (under 10x lens).



Immunohistochemical analysis of paraffin-embedded human liver tissue slide using 66479-1-Ig (Hemopexin antibody) at dilution of 1:500 (under 40x lens).



1X10<sup>6</sup> HepG2 cells were intracellularly stained with 0.5  $\mu$ g Anti-Human Hemopexin (66479-1-Ig, Clone:3A9D6) and CoraLite<sup>®</sup>488-Conjugated AffiniPure Goat Anti-Mouse IgG(H+L) at dilution 1:1000 (red), or 0.5  $\mu$ g Control Antibody. Cells were fixed with 4% PFA and permeabilized with Flow Cytometry Perm Buffer (PF00011-C).



Immunofluorescent analysis of (4% PFA) fixed human liver cancer tissue using Hemopexin antibody (66479-1-Ig, Clone: 3A9D6) at dilution of 1:400 and CoraLite<sup>®</sup>488-Conjugated AffiniPure Goat Anti-Mouse IgG(H+L).