

À des fins de recherche uniquement

# Anticorps Monoclonal anti-RhoGDI

Numéro de catalogue: 66480-1-Ig **Phare**



## Informations de base

Numéro de catalogue: 66480-1-Ig	Numéro d'acquisition GenBank: BC005851	Méthode de purification: Purification par protéine A
Taille: 150ul , Concentration: 2100 µg/ml by Nanodrop and 1500 µg/ml by Bradford method using BSA as the standard;	Identification du gène (NCBI): 396	CloneNo.: 1B1G9
Hôte: Mouse	Nom complet: Rho GDP dissociation inhibitor (GDI)	Dilutions recommandées: WB 1:500-1:3000
Isotype: IgG2a	MW calculé: 28 kDa	
Immunogen Catalog Number: AG0791	MW observés: 28 kDa	

## Applications

Applications testées: WB, ELISA	Contrôles positifs: WB : cellules HeLa, cellules C6, cellules HEK-293, cellules Jurkat, cellules NIH/3T3, cellules RAW 264.7
Spécificité de l'espèce: Humain, rat, souris	

## Informations générales

Rho GDP-dissociation inhibitor (RhoGDI), also called ARHGDIA, is one member of ARHGDIs, which is ubiquitously expressed and interacts with several Rho GTPases, mainly including RhoA, Rac1, and Cdc42. RhoGDI can inhibit nucleotide exchange and membrane association to downregulate the activities of Rho family GTPase. It is overexpressed in various human cancers. Activity of this protein is important in a variety of cellular processes, and it is overexpressed in various human cancers. Mutations in RhoGDI have been found in individuals with nephrotic syndrome, type 8.

## Stockage

Stockage:  
Stocker à -20°C. Stable pendant un an après l'expédition.  
Tampon de stockage:  
PBS avec azoture de sodium à 0,02 % et glycérol à 50 % pH 7,3  
L'aliquotage n'est pas nécessaire pour le stockage à -20C

\*\*\* Les 20ul contiennent 0,1% de BSA.

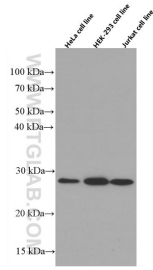
For technical support and original validation data for this product please contact:

T: 1 (888) 4PTGLAB (1-888-478-4522) (toll free  
in USA), or 1(312) 455-8498 (outside USA)

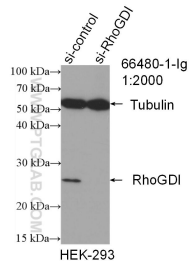
E: [proteintech@ptglab.com](mailto:proteintech@ptglab.com)  
W: [ptglab.com](http://ptglab.com)

This product is exclusively available under Proteintech Group brand and is not available to purchase from any other manufacturer.

## Données de validation sélectionnées



Various lysates were subjected to SDS PAGE followed by western blot with 66480-1-Ig (ARHGDI $\alpha$ GDI antibody) at dilution of 1:1500 incubated at room temperature for 1.5 hours.



WB result of RhoGDI antibody (66480-1-Ig; 1:2000; incubated at room temperature for 1.5 hours) with sh-Control and sh-RhoGDI transfected HEK-293 cells.