

À des fins de recherche uniquement

Anticorps Monoclonal anti-Cytokeratin 7



Numéro de catalogue: 66483-1-Ig

Phare

7 Publications

Informations de base

Numéro de catalogue: 66483-1-Ig	Numéro d'acquisition GenBank: BC002700	Méthode de purification: Purification par protéine A
Taille: 150ul, Concentration: 2100 µg/ml by Nanodrop and 1000 µg/ml by Bradford method using BSA as the standard;	Identification du gène (NCBI): 3855	CloneNo.: 2E1G5
Hôte: Mouse	Nom complet: keratin 7	Dilutions recommandées: WB 1:10000-1:40000 IHC 1:500-1:2000 IF 1:200-1:800
Isotype: IgG2a	MW calculé: 469 aa, 51 kDa	
Immunogen Catalog Number: AG7895	MW observés: 51 kDa	

Applications

Applications testées:

IF, IHC, WB, ELISA

Demandes citées:

IF, IHC

Spécificité de l'espèce:

Humain

Espèces citées:

Humain, souris

Remarque-IHC: il est suggéré de démasquer l'antigène avec un tampon de TE buffer pH 9,0; (*) A défaut, 'le démasquage de l'antigène peut être 'effectué avec un tampon citrate pH 6,0.

Contrôles positifs:

WB : cellules A549, cellules A431, cellules BxPC-3, cellules HeLa, cellules HepG2, cellules PC-3, cellules T-47D

IHC : tissu de cancer du poumon humain, tissu de cancer du sein humain, tissu de tumeur ovarienne humaine, tissu pancréatique humain, tissu rénal humain

IF : tissu de cancer de la prostate humaine,

Informations générales

Keratins are a large family of proteins that form the intermediate filament cytoskeleton of epithelial cells, which are classified into two major sequence types. Type I keratins are a group of acidic intermediate filament proteins, including K9-K23, and the hair keratins Ha1-Ha8. Type II keratins are the basic or neutral counterparts to the acidic type I keratins, including K1-K8, and the hair keratins, Hb1-Hb6. KRT7, also named as cytokeratin 7, is one member of type II basic cytokeratin. It is specifically expressed in the simple epithelia lining the cavities of the internal organs and in the gland ducts and blood vessels, and their neoplasms. KRT7 is marker of epithelial tissues, but not present in carcinomas of stratified squamous cell origin. This antibody is specifically against KRT7.

Publications notables

Autrice	Pubmed ID	Journal	Application
Yan Fang	35643225	Gene	IF
Xin Chen	35602106	Oxid Med Cell Longev	IHC,IF
Yanling Gou	30838396	Hum Reprod	IF

Stockage

Stockage:

Stocker à -20°C. Stable pendant un an après l'expédition.

Tampon de stockage:

PBS avec azoture de sodium à 0,02 % et glycérol à 50 % pH 7,3

L'aliquotage n'est pas nécessaire pour le stockage à -20C

*** Les 20ul contiennent 0,1% de BSA.

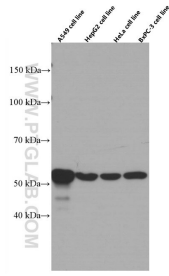
For technical support and original validation data for this product please contact:

T: 1 (888) 4PTGLAB (1-888-478-4522) (toll free in USA), or 1(312) 455-8498 (outside USA)

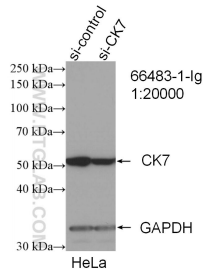
E: proteintech@ptglab.com
W: ptglab.com

This product is exclusively available under Proteintech Group brand and is not available to purchase from any other manufacturer.

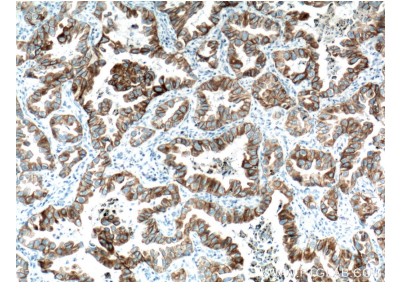
Données de validation sélectionnées



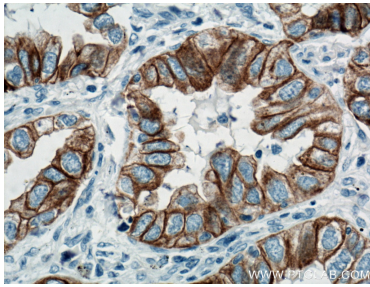
Various lysates were subjected to SDS PAGE followed by western blot with 66483-1-Ig (CK7 antibody) at dilution of 1:20000 incubated at room temperature for 1.5 hours.



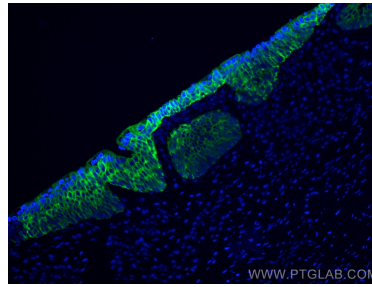
WB result of CK7 antibody (66483-1-Ig; 1:20000; incubated at room temperature for 1.5 hours) with sh-Control and sh-CK7 transfected HeLa cells.



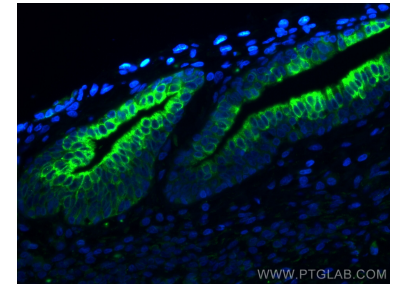
Immunohistochemical analysis of paraffin-embedded human lung cancer tissue slide using 66483-1-Ig (CK7 antibody) at dilution of 1:1000 (under 10x lens). Heat mediated antigen retrieval with Tris-EDTA buffer (pH 9.0).



Immunohistochemical analysis of paraffin-embedded human lung cancer tissue slide using 66483-1-Ig (CK7 antibody) at dilution of 1:1000 (under 40x lens). Heat mediated antigen retrieval with Tris-EDTA buffer (pH 9.0).



Immunofluorescent analysis of (4% PFA) fixed human prostate cancer tissue using Cytokeratin 7 antibody (66483-1-Ig, Clone: 2E1G5) at dilution of 1:400 and CoraLite®488-Conjugated AffiniPure Goat Anti-Mouse IgG(H+L).



Immunofluorescent analysis of (4% PFA) fixed human prostate cancer tissue using Cytokeratin 7 antibody (66483-1-Ig, Clone: 2E1G5) at dilution of 1:400 and CoraLite®488-Conjugated AffiniPure Goat Anti-Mouse IgG(H+L).