

À des fins de recherche uniquement

Anticorps Monoclonal anti-human IgM



Numéro de catalogue: 66484-1-Ig **2 Publications**

Informations de base

Numéro de catalogue: 66484-1-Ig	Numéro d'acquisition GenBank: BC009851	Méthode de purification: Purification par protéine G
Taille: 150ul , Concentration: 1500 µg/ml by Nanodrop;	Identification du gène (NCBI): 3507	CloneNo.: 2D10B10
Hôte: Mouse	Nom complet: immunoglobulin heavy constant mu	Dilutions recommandées: WB 1:5000-1:20000 IHC 1:2000-1:6000 IF 1:200-1:800
Isotype: IgG1	MW calculé: 69 kDa	
Immunogen Catalog Number: AG1459	MW observés: 75 kDa	

Applications

Applications testées:

IF, IHC, WB, ELISA

Demandes citées:

IF, WB

Spécificité de l'espèce:

Humain

Espèces citées:

Humain

Contrôles positifs:

WB : tissu plasmatique humain,

IHC : tissu d'amygdalite humaine, tissu de lymphome humain

IF : tissu d'amygdalite humaine, tissu d'appendicite humaine

Remarque-IHC: il est suggéré de démasquer l'antigène avec un tampon de TE buffer pH 9,0; (*) À défaut, le démasquage de l'antigène peut être effectué avec un tampon citrate pH 6,0.

Informations générales

IGHM is the constant region of heavy chain of IgM. IgM is the first immunoglobulin expressed during B cell development. IgM antibodies play an important role in primary immune response involved in early recognition of external invaders like bacteria and viruses, cellular waste and modified self, as well as in recognition and elimination of precancerous and cancerous lesions. The μ heavy chain disease is a rare lymphoproliferative disorder. Human immunoglobulin heavy chain locus translocations are associated with leukaemias and lymphomas, including multiple myeloma, mantle cell lymphoma, Burkitt's lymphoma and diffuse large B cell lymphoma. This antibody detects the heavy chain of human IgM (~75 kDa).

Publications notables

Autrice	Pubmed ID	Journal	Application
Han Liu	36106364	Adv Sci (Weinh)	IF
Anne Kathrin Wessig	35296708	Sci Rep	WB

Stockage

Stockage:

Stocker à -20°C. Stable pendant un an après l'expédition.

Tampon de stockage:

PBS avec azoture de sodium à 0,02 % et glycérol à 50 % pH 7,3

L'aliquotage n'est pas nécessaire pour le stockage à -20C

*** Les 20ul contiennent 0,1% de BSA.

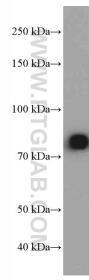
For technical support and original validation data for this product please contact:

T: 1 (888) 4PTGLAB (1-888-478-4522) (toll free in USA), or 1(312) 455-8498 (outside USA)

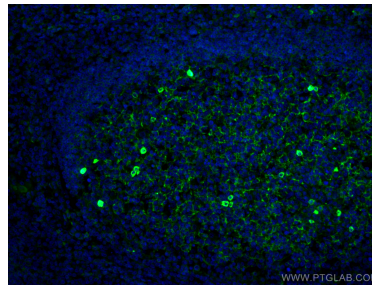
E: proteintech@ptglab.com
W: ptglab.com

This product is exclusively available under Proteintech Group brand and is not available to purchase from any other manufacturer.

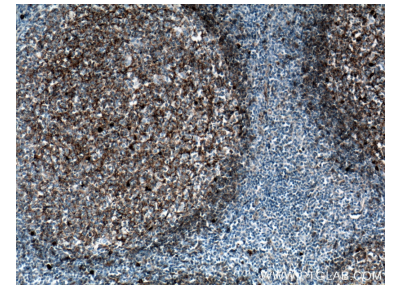
Données de validation sélectionnées



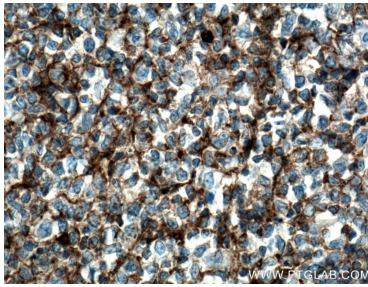
0.1 μ L human plasma was subjected to SDS PAGE followed by western blot with 66484-1-Ig (IGHM antibody) at dilution of 1:10000 incubated at room temperature for 1.5 hours.



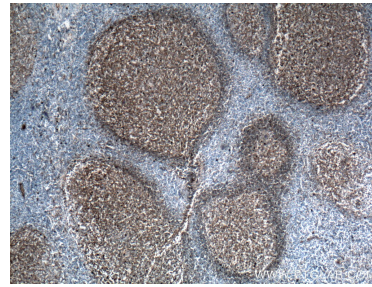
Immunofluorescent analysis of (4% PFA) fixed human tonsillitis tissue using human IgM antibody (66484-1-Ig, Clone: 2D10B10) at dilution of 1:400 and CoraLite®488-Conjugated AffiniPure Goat Anti-Mouse IgG(H+L).



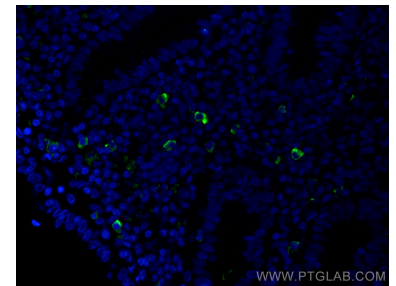
Immunohistochemical analysis of paraffin-embedded human tonsillitis tissue slide using 66484-1-Ig (IGHM antibody) at dilution of 1:1000 (under 10x lens. Heat mediated antigen retrieval with Tris-EDTA buffer (pH 9.0).



Immunohistochemical analysis of paraffin-embedded human tonsillitis tissue slide using 66484-1-Ig (IGHM antibody) at dilution of 1:1000 (under 40x lens. Heat mediated antigen retrieval with Tris-EDTA buffer (pH 9.0).



Immunohistochemical analysis of paraffin-embedded human tonsillitis tissue slide using 66484-1-Ig (IGHM antibody) at dilution of 1:1000 (under 4x lens. Heat mediated antigen retrieval with Tris-EDTA buffer (pH 9.0).



Immunofluorescent analysis of (4% PFA) fixed human appendicitis tissue using human IgM antibody (66484-1-Ig, Clone: 2D10B10) at dilution of 1:400 and CoraLite®488-Conjugated AffiniPure Goat Anti-Mouse IgG(H+L).