

À des fins de recherche uniquement

Anticorps Monoclonal anti-CLTC

Numéro de catalogue: 66487-1-Ig

Phare

5 Publications



Informations de base

Numéro de catalogue: 66487-1-Ig	Numéro d'acquisition GenBank: BC054489	Méthode de purification: Purification par protéine G
Taille: 150ul, Concentration: 1500 µg/ml by Nanodrop and 1000 µg/ml by Bradford method using BSA as the standard;	Identification du gène (NCBI): 1213	CloneNo.: 1B3D7
Hôte: Mouse	Nom complet: clathrin, heavy chain (Hc)	Dilutions recommandées: WB 1:20000-1:80000 IHC 1:1000-1:4000 IF 1:400-1:1600
Isotype: IgG1	MW calculé: 192 kDa	
Immunogen Catalog Number: AG25040	MW observés: 170 kDa	

Applications

Applications testées:

IF, IHC, WB, ELISA

Demandes citées:

IF, WB

Spécificité de l'espèce:

Humain, porc, rat, souris

Espèces citées:

Humain, porc, souris

Remarque-IHC: il est suggéré de démasquer l'antigène avec un tampon de TE buffer pH 9,0; (*) A défaut, 'le démasquage de l'antigène peut être effectué avec un tampon citrate pH 6,0.

Contrôles positifs:

WB : cellules HeLa, cellules Jurkat, cellules Raji, cellules ROS1728, tissu cérébral de porc

IHC : tissu rénal de souris, tissu de cancer du sein humain

IF : cellules HepG2, cellules HeLa

Informations générales

Clathrin is the major protein of the polyhedral coat of coated pits and vesicles which entrap specific macromolecules during receptor-mediated endocytosis. The clathrin molecule has a triskelion shape. Each clathrin triskelion is composed of three identical heavy chains (CLTC) (160-190 kDa) and three light chains of two types, LCA (CLTA) and LCB (CLTB) (30-40 kDa). The heavy chain provides the structural backbone of the clathrin lattice. (PMID: 9133677)

Publications notables

Autrice	Pubmed ID	Journal	Application
Nerea Ugidos	31620119	Front Immunol	WB
Ruihan Shi	33679671	Front Microbiol	WB
Charlotte Cresens	37539031	iScience	WB

Stockage

Stockage:

Stocker à -20°C. Stable pendant un an après l'expédition.

Tampon de stockage:

PBS avec azoture de sodium à 0,02 % et glycérol à 50 % pH 7,3

L'aliquotage n'est pas nécessaire pour le stockage à -20C

*** Les 20ul contiennent 0,1% de BSA.

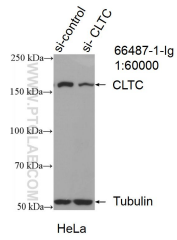
For technical support and original validation data for this product please contact:

T: 1 (888) 4PTGLAB (1-888-478-4522) (toll free in USA), or 1(312) 455-8498 (outside USA)

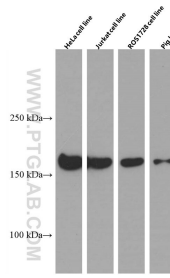
E: proteintech@ptglab.com
W: ptglab.com

This product is exclusively available under Proteintech Group brand and is not available to purchase from any other manufacturer.

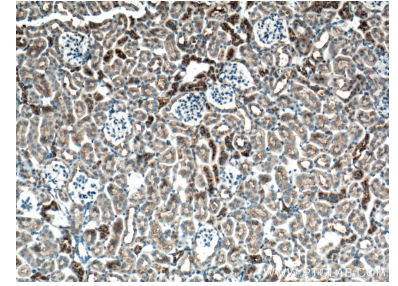
Données de validation sélectionnées



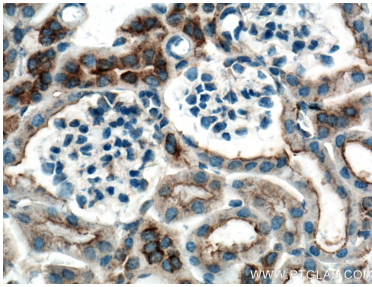
WB result of CLTC antibody (66487-1-Ig; 1:60000; incubated at room temperature for 1.5 hours) with sh-Control and sh-CLTC transfected HeLa cells.



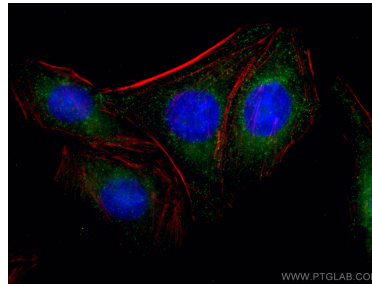
HeLa, Jurkat, ROS1728 cells, and pig brain tissue were subjected to SDS PAGE followed by western blot with 66487-1-Ig (CLTC antibody) at dilution of 1:40000 incubated at room temperature for 1.5 hours.



Immunohistochemical analysis of paraffin-embedded mouse kidney tissue slide using 66487-1-Ig (CLTC antibody) at dilution of 1:2000 (under 10x lens. Heat mediated antigen retrieval with Tris-EDTA buffer (pH 9.0).



Immunohistochemical analysis of paraffin-embedded mouse kidney tissue slide using 66487-1-Ig (CLTC antibody) at dilution of 1:2000 (under 40x lens. Heat mediated antigen retrieval with Tris-EDTA buffer (pH 9.0).



Immunofluorescent analysis of (-20°C Ethanol) fixed HepG2 cells using CLTC antibody (66487-1-Ig, Clone: 1B3D7) at dilution of 1:800 and CoraLite® 488-Conjugated AffiniPure Goat Anti-Mouse IgG(H+L), CL594-Phalloidin (red).