

À des fins de recherche uniquement

Anticorps Monoclonal anti-S100A4

Numéro de catalogue: 66489-1-Ig

Phare

15 Publications



Informations de base

Numéro de catalogue: 66489-1-Ig	Numéro d'acquisition GenBank: BC016300	Méthode de purification: Purification par protéine A
Taille: 150ul, Concentration: 1700 µg/ml by Nanodrop and 1000 µg/ml by Bradford method using BSA as the standard;	Identification du gène (NCBI): 6275	CloneNo.: 2G11B4
Hôte: Mouse	Nom complet: S100 calcium binding protein A4	Dilutions recommandées: WB 1:1000-1:6000 IHC 1:1000-1:4000 IF 1:50-1:500
Isotype: IgG2a	MW calculé: 101 aa, 12 kDa	
Immunogen Catalog Number: AG9019	MW observés: 12 kDa	

Applications

Applications testées:

IF, IHC, WB, ELISA

Demandes citées:

FC, IF, IHC, WB

Spécificité de l'espèce:

Humain, souris

Espèces citées:

Humain, rat, souris

Remarque-IHC: il est suggéré de démasquer l'antigène avec un tampon de TE buffer pH 9,0; (*) A défaut, 'le démasquage de l'antigène peut être effectué avec un tampon citrate pH 6,0.

Contrôles positifs:

WB : cellules HeLa, cellules A375, cellules A549, cellules NIH/3T3, cellules PC-3

IHC : tissu de cancer du poumon humain, cellules K-562, tissu d'amygdalite humaine, tissu de cancer du côlon humain, tissu pulmonaire de souris

IF : cellules HepG2, cellules HeLa

Informations générales

S100A4 is a member of the S100 family of calcium-binding proteins. The S100 family members have been involved in the regulation of a number of cellular processes such as cell cycle progression and differentiation. S100A4 is known to localize to and function in the nucleus, cytoplasm of cells, and the extracellular space. S100A4 has also been shown to be associated with tumor growth, motility, invasion, metastasis, angiogenesis, apoptosis, and chemoresistance. It is a fibroblast-specific protein associated with mesenchymal cell morphology and motility, is expressed during epithelial-mesenchymal transformations (EMT) in vivo (PMID: 9362334). It is a specific prognostic marker for renal survival in patients with IgAN (PMID: 16105038). It is also an improved marker for lung fibroblasts that could be useful for investigating the pathogenesis of pulmonary fibrosis (PMID: 15618458). Overexpression of S100A4 is correlated with a worse prognosis in patients with various types of cancer.

Publications notables

Autrice	Pubmed ID	Journal	Application
Xiaojuan Zhao	33058500	J Cell Mol Med	WB, IF
Jing Cheng	36313337	Front Pharmacol	IF
Zhenglong Guo	35306537	Cell Death Differ	IHC

Stockage

Stockage:

Stocker à -20°C. Stable pendant un an après l'expédition.

Tampon de stockage:

PBS avec azoture de sodium à 0,02 % et glycérol à 50 % pH 7,3

L'aliquotage n'est pas nécessaire pour le stockage à -20C

*** Les 20ul contiennent 0,1% de BSA.

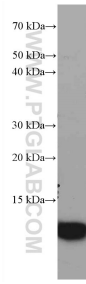
For technical support and original validation data for this product please contact:

T: 1 (888) 4PTGLAB (1-888-478-4522) (toll free in USA), or 1(312) 455-8498 (outside USA)

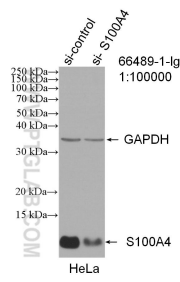
E: proteintech@ptglab.com
W: ptglab.com

This product is exclusively available under Proteintech Group brand and is not available to purchase from any other manufacturer.

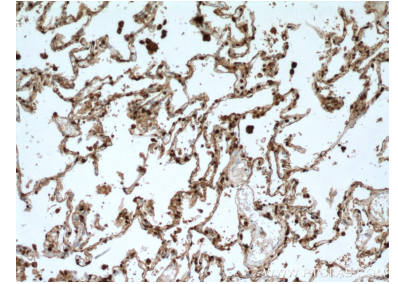
Données de validation sélectionnées



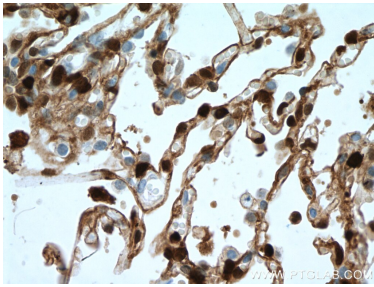
HeLa cells were subjected to SDS PAGE followed by western blot with 66489-1-Ig (S100A4 antibody) at dilution of 1:3000 incubated at room temperature for 1.5 hours.



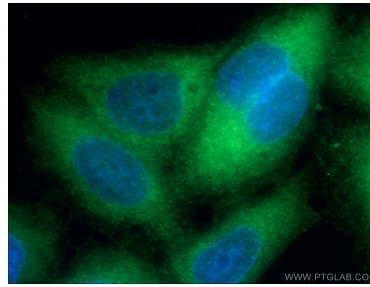
WB result of S100A4 antibody (66489-1-Ig; 1:100000; incubated at room temperature for 1.5 hours) with sh-Control and sh-S100A4 transfected HeLa cells.



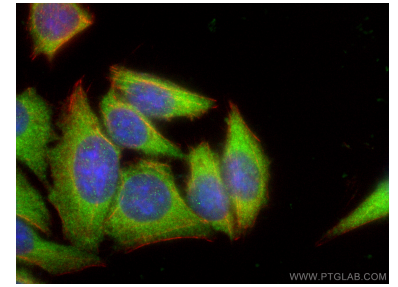
Immunohistochemical analysis of paraffin-embedded human lung cancer tissue slide using 66489-1-Ig (S100A4 antibody) at dilution of 1:4000 (under 10x lens. Heat mediated antigen retrieval with Tris-EDTA buffer (pH 9.0).



Immunohistochemical analysis of paraffin-embedded human lung cancer tissue slide using 66489-1-Ig (S100A4 antibody) at dilution of 1:4000 (under 40x lens. Heat mediated antigen retrieval with Tris-EDTA buffer (pH 9.0).



Immunofluorescent analysis of (-20°C Ethanol) fixed HeLa cells using 66489-1-Ig (S100A4 antibody) at dilution of 1:100 and Alexa Fluor 488-conjugated AffiniPure Goat Anti-Mouse IgG(H+L).



Immunofluorescent analysis of (-20°C Ethanol) fixed HepG2 cells using S100A4 antibody (66489-1-Ig, Clone: 2G11B4) at dilution of 1:200 and CoraLite@488-Conjugated AffiniPure Goat Anti-Mouse IgG(H+L), CL594-phalloidin (red).