

À des fins de recherche uniquement

# Anticorps Monoclonal anti-NRG1, isoform SMDF



Numéro de catalogue: 66492-1-Ig **2 Publications**

## Informations de base

Numéro de catalogue: 66492-1-Ig	Numéro d'acquisition GenBank: BC007675	Méthode de purification: Purification par protéine A
Taille: 150ul, Concentration: 1400 µg/ml by Nanodrop and 1000 µg/ml by Bradford method using BSA as the standard;	Identification du gène (NCBI): 3084	CloneNo.: 2C6D12
Hôte: Mouse	Nom complet: neuregulin 1	Dilutions recommandées: WB 1:5000-1:50000 IF 1:200-1:800
Isotype: IgG1	MW calculé: 32 kDa	
Immunogen Catalog Number: AG0803	MW observés: 70 kDa	

## Applications

### Applications testées:

IF, WB, ELISA

### Demandes citées:

IF, IHC

### Spécificité de l'espèce:

Humain, Lapin, porc, rat, souris

### Espèces citées:

rat, souris

### Contrôles positifs:

WB : tissu cérébral de rat, cellules HepG2, tissu cérébral de lapin, tissu cérébral de souris, tissu de cervelet de porc, tissu de cervelet de rat, tissu de cervelet de souris

IF : cellules MCF-7,

## Informations générales

Neuregulin 1 (NRG1) is a trophic factor that has been implicated in neural development, neurotransmission, and synaptic plasticity. NRG1 has multiple isoforms that are generated by usage of different promoters and alternative splicing of a single gene. NRG1 and its receptor ErbB tyrosine kinase are expressed not only in the developing nervous system, but also in the adult brain. The antibody is specific to NRG1 isoform SMDF.

## Publications notables

Autrice	Pubmed ID	Journal	Application
Jianxia Wen	32073745	J Cell Mol Med	IHC
Harisa Spahic	36613949	Int J Mol Sci	IF

## Stockage

### Stockage:

Stocker à -20°C. Stable pendant un an après l'expédition.

### Tampon de stockage:

PBS avec azoture de sodium à 0,02 % et glycérol à 50 % pH 7,3

L'aliquotage n'est pas nécessaire pour le stockage à -20C

\*\*\* Les 20ul contiennent 0,1% de BSA.

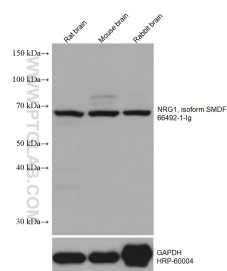
For technical support and original validation data for this product please contact:

T: 1 (888) 4PTGLAB (1-888-478-4522) (toll free  
in USA), or 1(312) 455-8498 (outside USA)

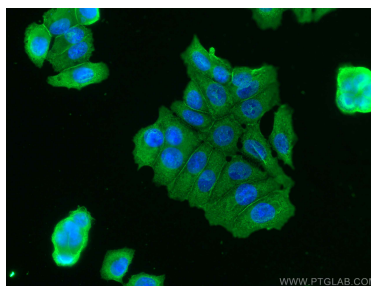
E: proteintech@ptglab.com  
W: ptglab.com

This product is exclusively available under Proteintech Group brand and is not available to purchase from any other manufacturer.

## Données de validation sélectionnées



Various lysates were subjected to SDS PAGE followed by western blot with 66492-1-Ig (NRG1, isoform SMDF antibody) at dilution of 1:10000 incubated at room temperature for 1.5 hours. The membrane was stripped and reblotted with HRP-conjugated GAPDH Monoclonal antibody (HRP-60004) as loading control.



Immunofluorescent analysis of (-20°C Methanol) fixed MCF-7 cells using NRG1, isoform SMDF antibody (66492-1-Ig, Clone: 2C6D12) at dilution of 1:400 and CoraLite®488-Conjugated AffiniPure Goat Anti-Mouse IgG(H+L).