

À des fins de recherche uniquement

# Anticorps Monoclonal anti-CD40L/CD154



Numéro de catalogue: 66502-1-Ig **3 Publications**

## Informations de base

<b>Numéro de catalogue:</b> 66502-1-Ig	<b>Numéro d'acquisition GenBank:</b> BC071754	<b>Méthode de purification:</b> Purification par protéine A
<b>Taille:</b> 150ul , Concentration: 1400 µg/ml by 959 Nanodrop and 1000 µg/ml by Bradford method using BSA as the standard;	<b>Identification du gène (NCBI):</b> 959	<b>CloneNo.:</b> 1E6D10
<b>Hôte:</b> Mouse	<b>Nom complet:</b> CD40 ligand	<b>Dilutions recommandées:</b> WB 1:1000-1:6000
<b>Isotype:</b> IgG2a	<b>MW calculé:</b> 261 aa, 29 kDa	
<b>Immunogen Catalog Number:</b> AG24941	<b>MW observés:</b> 30 kDa	

## Applications

<b>Applications testées:</b> FC, WB, ELISA	<b>Contrôles positifs:</b> WB : cellules Jurkat, plaquettes de sang périphérique humain
<b>Demandes citées:</b> IHC	
<b>Spécificité de l'espèce:</b> Humain, rat	
<b>Espèces citées:</b> Humain	

## Informations générales

The CD40 ligand (CD40L, TRAP, CD154), a member of the TNF superfamily of ligands, is expressed as either a 33-kd transmembrane homologue or 18-kd soluble form (sCD154). CD40L is primarily expressed on activated CD4+ T cells and on a small proportion of CD8+ T cells and platelets. It binds to CD40 on antigen-presenting cells (APC), which leads to many effects depending on the target cell type. Recent studies have suggested that CD40/CD40L interactions regulate oxidative stress and affect various signaling pathways in both the immunological and the cardiovascular systems. The CD40/CD40L system is also involved in tumorigenesis. Its expression is tightly regulated, and abnormal levels of CD40L are associated with the pathogenesis of atheromatous plaque destabilization and thrombotic events. Multiple mutations in CD40LG gene have been identified that are associated with hyper-IgM immunodeficiency syndrome type 1.

## Publications notables

Autrice	Pubmed ID	Journal	Application
YuanPing Hai	36128805	Thyroid	IHC
Nozomu Kurose	31358479	Pathol Res Pract	IHC
Yoshiaki Kobayashi	33647861	Pathol Res Pract	IHC

## Stockage

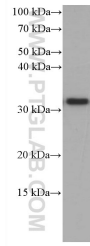
**Stockage:**  
Stocker à -20°C. Stable pendant un an après l'expédition.  
**Tampon de stockage:**  
PBS avec azoture de sodium à 0,02 % et glycérol à 50 % pH 7,3  
L'aliquotage n'est pas nécessaire pour le stockage à -20C

**\*\*\* Les 20ul contiennent 0,1% de BSA.**

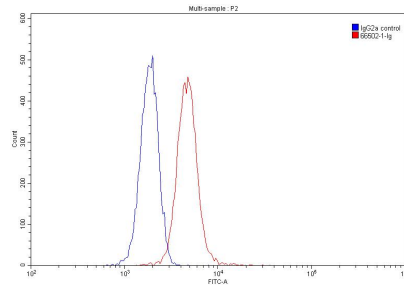
For technical support and original validation data for this product please contact:  
T: 1 (888) 4PTGLAB (1-888-478-4522) (toll free in USA), or 1(312) 455-8498 (outside USA)  
E: [proteintech@ptglab.com](mailto:proteintech@ptglab.com)  
W: [ptglab.com](http://ptglab.com)

**This product is exclusively available under Proteintech Group brand and is not available to purchase from any other manufacturer.**

## Données de validation sélectionnées



Jurkat cells were subjected to SDS PAGE followed by western blot with 66502-1-ig (CD40L/CD154 antibody) at dilution of 1:3000 incubated at room temperature for 1.5 hours.



$1 \times 10^6$  Jurkat cells were stained with 0.20ug CD40L/CD154 antibody (66502-1-ig, red) and control antibody (blue). Fixed with 90% MeOH.