

À des fins de recherche uniquement

# Anticorps Monoclonal anti-NRF2, NFE2L2



Numéro de catalogue: 66504-1-Ig

Phare

93 Publications

## Informations de base

Numéro de catalogue: 66504-1-Ig	Numéro d'acquisition GenBank: BC011558	Méthode de purification: Purification par protéine A
Taille: 150ul, Concentration: 1500 µg/ml by Nanodrop and 1000 µg/ml by Bradford method using BSA as the standard;	Identification du gène (NCBI): 4780	CloneNo.: 1E9E3
Hôte: Mouse	Nom complet: nuclear factor (erythroid-derived 2)- like 2	Dilutions recommandées: WB 1:1000-1:4000
Isotype: IgG2b	MW calculé 605 aa, 68 kDa	
Immunogen Catalog Number: AG9469	MW observés: 110 kDa	

## Applications

Applications testées: WB, ELISA	Contrôles positifs: WB : cellules HeLa,
Demandes citées: CoIP, IF, IHC, IP, WB	
Spécificité de l'espèce: Humain	
Espèces citées: Humain, porc, rat, souris	

## Informations générales

NRF2, also named as NFE2L2, belongs to the bZIP family and CNC subfamily. It is a transcription activator that binds to antioxidant response (ARE) elements in the promoter regions of target genes. NRF2 is important for the coordinated up-regulation of genes in response to oxidative stress. It may be involved in the transcriptional activation of genes of the beta-globin cluster by mediating enhancer activity of hypersensitive site 2 of the beta-globin locus control region. Nrf2 is a key player in the regulation of genes encoding for many antioxidant response enzymes. The expression of NRF2 may be induced under oxidative stress (PMID:14567983). In lung cancer, Nrf2 activation in malignant cells has been associated with tumor progression and chemotherapy resistance (PMID:20534738). Identifying patients with abnormal NRF2 expression may be important for selection for chemotherapy in NSCLC. As new investigators break into the emerging field of Nrf2 research, confusion regarding the correct migratory pattern of Nrf2 is causing doubts about the accuracy and reproducibility of published results. This letter provides solid evidence that the actually observed molecular weight of Nrf2 is about 70kDa and 95-110 kDa. (PMID: 22703241).

## Publications notables

Autrice	Pubmed ID	Journal	Application
Jinliang Liu	34630847	Oxid Med Cell Longev	WB
Zi-Chao Wang	36163178	Cell Death Dis	WB
Lei Zhao	34582963	Food Chem Toxicol	WB

## Stockage

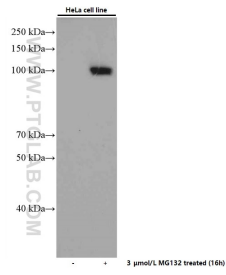
Stockage:  
Stocker à -20°C. Stable pendant un an après l'expédition.  
Tampon de stockage:  
PBS avec azoture de sodium à 0,02 % et glycérol à 50 % pH 7,3  
L'aliquotage n'est pas nécessaire pour le stockage à -20C

\*\*\* Les 20ul contiennent 0,1% de BSA.

For technical support and original validation data for this product please contact:  
T: 1 (888) 4PTGLAB (1-888-478-4522) (toll free in USA), or 1(312) 455-8498 (outside USA)  
E: proteintech@ptglab.com  
W: ptglab.com

This product is exclusively available under Proteintech Group brand and is not available to purchase from any other manufacturer.

## Données de validation sélectionnées



Untreated and MG132 treated HeLa cells were subjected to SDS PAGE followed by western blot with 66504-1-Ig (NRF2, NFE2L2 antibody) at dilution of 1:2000 incubated at room temperature for 1.5 hours.