

À des fins de recherche uniquement

# Anticorps Monoclonal anti-MDH1

Numéro de catalogue: 66505-1-Ig **Phare**



## Informations de base

<b>Numéro de catalogue:</b> 66505-1-Ig	<b>Numéro d'acquisition GenBank:</b> BC001484	<b>Méthode de purification:</b> Purification par protéine G
<b>Taille:</b> 150ul, Concentration: 1300 µg/ml by Nanodrop and 1000 µg/ml by Bradford method using BSA as the standard;	<b>Identification du gène (NCBI):</b> 4190	<b>CloneNo.:</b> 1F9A2
<b>Hôte:</b> Mouse	<b>Nom complet:</b> malate dehydrogenase 1, NAD (soluble)	<b>Dilutions recommandées:</b> WB 1:2000-1:10000 IF 1:50-1:500
<b>Isotype:</b> IgG1	<b>MW calculé:</b> 334 aa, 36 kDa	
<b>Immunogen Catalog Number:</b> AG8744	<b>MW observés:</b> 36-37 kDa	

## Applications

<b>Applications testées:</b> FC, IF, WB, ELISA	<b>Contrôles positifs:</b>
<b>Spécificité de l'espèce:</b> Humain, souris	<b>WB :</b> cellules HeLa, cellules HEK-293, cellules Jurkat, cellules NIH/3T3, cellules RAW 264.7
	<b>IF :</b> cellules HepG2,

## Informations générales

MDH1 (Malate dehydrogenase, cytoplasmic) is also named as MDHA and belongs to the LDH/MDH superfamily and MDH type 2 family which catalyzes the reversible oxidation of malate to oxaloacetate, utilizing the NAD/NADH cofactor system in the citric acid cycle. It can exist as a dimer and the dimeric MDH1 is the mitochondrial isoenzyme, whereas the tetrameric MDH2 is the glycosomal isoenzyme. (PMID:10693743)

## Stockage

**Stockage:**  
Stocker à -20°C. Stable pendant un an après l'expédition.  
**Tampon de stockage:**  
PBS avec azoture de sodium à 0,02 % et glycérol à 50 % pH 7,3  
L'aliquotage n'est pas nécessaire pour le stockage à -20C

\*\*\* Les 20ul contiennent 0,1% de BSA.

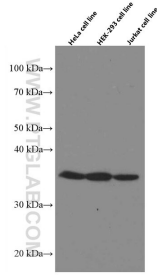
For technical support and original validation data for this product please contact:

T: 1 (888) 4PTGLAB (1-888-478-4522) (toll free in USA), or 1(312) 455-8498 (outside USA)

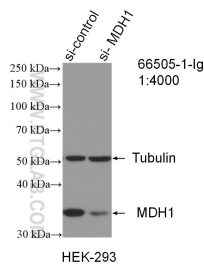
E: proteintech@ptglab.com  
W: ptglab.com

This product is exclusively available under Proteintech Group brand and is not available to purchase from any other manufacturer.

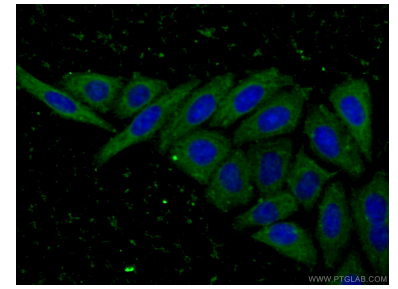
## Données de validation sélectionnées



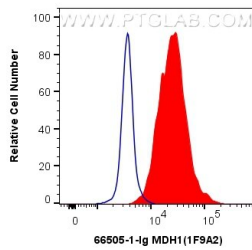
Various lysates were subjected to SDS PAGE followed by western blot with 66505-1-Ig (MDH1 antibody) at dilution of 1:5000 incubated at room temperature for 1.5 hours.



WB result of MDH1 antibody (66505-1-Ig; 1:4000; incubated at room temperature for 1.5 hours) with sh-Control and sh-MDH1 transfected HEK-293 cells.



Immunofluorescent analysis of (-20°C Ethanol) fixed HepG2 cells using 66505-1-Ig (MDH1 antibody) at dilution of 1:100 and CoraLite488-Conjugated AffiniPure Goat Anti-Mouse IgG(H+L).



1X10<sup>6</sup> HEK-293 cells were intracellularly stained with 0.4 ug Anti-Human MDH1 (66505-1-Ig, Clone:1F9A2) and CoraLite®488-Conjugated AffiniPure Goat Anti-Mouse IgG(H+L) at dilution 1:1000 (red), or 0.4 ug Mouse IgG1 Isotype Control (MOPC-21) (65124-1-Ig, Clone: MOPC-21) (blue). Cells were fixed with 4% PFA and permeabilized with Flow Cytometry Perm Buffer (PF00011-C).