

À des fins de recherche uniquement

Anticorps Monoclonal anti-SP1

Numéro de catalogue: 66508-1-Ig **2 Publications**



Informations de base

Numéro de catalogue: 66508-1-Ig	Numéro d'acquisition GenBank: BC062539	Méthode de purification: Purification par protéine G
Taille: 150ul , Concentration: 1100 µg/ml by Nanodrop and 1000 µg/ml by Bradford method using BSA as the standard;	Identification du gène (NCBI): 6667	CloneNo.: 4G3H3
Hôte: Mouse	Nom complet: Sp1 transcription factor	Dilutions recommandées: WB 1:1000-1:6000 IHC 1:175-1:700 IF 1:50-1:500
Isotype: IgG1	MW calculé: 785 aa, 81 kDa	
Immunogen Catalog Number: AG16720	MW observés: 95-105 kDa, 60-65 kDa	

Applications

Applications testées:
FC, IF, IHC, WB, ELISA

Demandes citées:
IHC, WB

Spécificité de l'espèce:
Humain, rat, souris

Espèces citées:
rat, souris

Remarque-IHC: il est suggéré de démasquer l'antigène avec un tampon de TE buffer pH 9,0; (*) A défaut, 'le démasquage de l'antigène peut être effectué avec un tampon citrate pH 6,0.

Contrôles positifs:

WB : cellules Jurkat, cellules HEK-293, cellules HeLa, cellules NIH/3T3

IHC : tissu de cancer du poumon humain, tissu de cancer du côlon humain

IF : tissu de cancer du côlon humain, cellules HEK-293

Informations générales

The transcription factor Sp1 is a C2H2 zinc-finger protein that is involved in the regulation of a wide variety of genes, including housekeeping genes and tumor-developing genes. It is associated with tumor development, growth, and metastasis [PMID: 16209919]. It regulates the expression of a large number of genes involved in a variety of processes such as cell growth, apoptosis, differentiation and immune responses. Besides, it has a role in modulating the cellular response to DNA damage, recruiting SMARCA4/BRG1 on the c-FOS promoter, regulation of FE65 gene expression [PMID:11371615,16332679]. SP1 has some isoforms with MW ~95-106 kDa and ~60 kDa [PMID:17462816].

Publications notables

Autrice	Pubmed ID	Journal	Application
Shaoheng Li	34811737	Br J Pharmacol	WB
Huanhuan Zhang	34777538	Evid Based Complement Alternat Med	IHC

Stockage

Stockage:

Stocker à -20°C. Stable pendant un an après l'expédition.

Tampon de stockage:

PBS avec azoture de sodium à 0,02 % et glycérol à 50 % pH 7,3

L'aliquotage n'est pas nécessaire pour le stockage à -20C

***** Les 20ul contiennent 0,1% de BSA.**

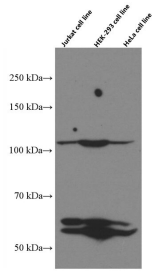
For technical support and original validation data for this product please contact:

T: 1 (888) 4PTGLAB (1-888-478-4522) (toll free in USA), or 1(312) 455-8498 (outside USA)

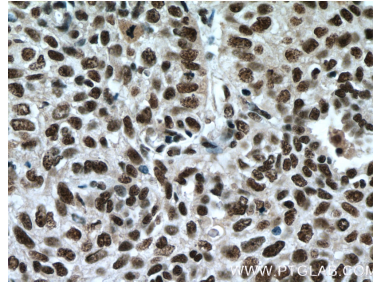
E: proteintech@ptglab.com
W: ptglab.com

This product is exclusively available under Proteintech Group brand and is not available to purchase from any other manufacturer.

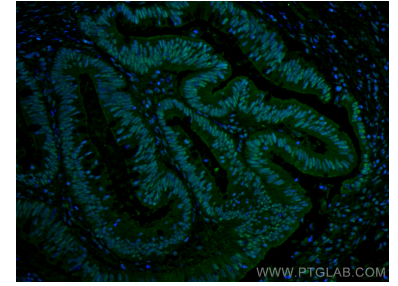
Données de validation sélectionnées



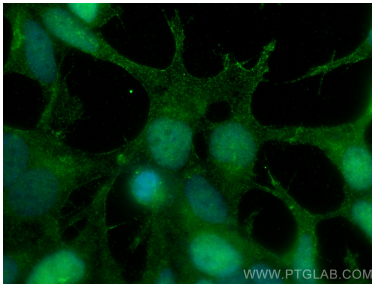
Various cells were subjected to SDS PAGE followed by western blot with 66508-1-Ig (SP1 antibody) at dilution of 1:3000 incubated at room temperature for 1.5 hours.



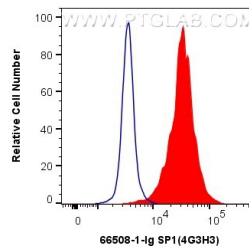
Immunohistochemical analysis of paraffin-embedded human lung cancer tissue slide using 66508-1-Ig (SP1 antibody) at dilution of 1:350 (under 40x lens. Heat mediated antigen retrieval with Tris-EDTA buffer (pH 9.0).



Immunofluorescent analysis of (4% PFA) fixed human colon cancer tissue using SP1 antibody (66508-1-Ig, Clone: 4G3H3) at dilution of 1:200 and CoraLite®488-Conjugated AffiniPure Goat Anti-Mouse IgG(H+L).



Immunofluorescent analysis of (4% PFA) fixed HEK-293 cells using SP1 antibody (66508-1-Ig, Clone: 4G3H3) at dilution of 1:800 and CoraLite®488-Conjugated AffiniPure Goat Anti-Mouse IgG(H+L).



1X10⁶ HEK-293 cells were intracellularly stained with 0.4 ug Anti-Human SP1 (66508-1-Ig, Clone:4G3H3) and CoraLite®488-Conjugated AffiniPure Goat Anti-Mouse IgG(H+L) at dilution 1:1000 (red), or 0.4 ug Mouse IgG1 Isotype Control (MOPC-21) (65124-1-Ig, Clone: MOPC-21) (blue). Cells were fixed with 4% PFA and permeabilized with Flow Cytometry Perm Buffer (PF00011-C).