

À des fins de recherche uniquement

Anticorps Monoclonal anti-E2F1

Numéro de catalogue: 66515-1-Ig

Phare

31 Publications



Informations de base

Numéro de catalogue:

66515-1-Ig

Numéro d'acquisition GenBank:

BC050369

Méthode de purification:

Purification par protéine A

Taille:

150ul, Concentration: 2400 µg/ml by Nanodrop and 1000 µg/ml by Bradford method using BSA as the standard;

Identification du gène (NCBI):

1869

CloneNo.:

5D7G8

Hôte:

Mouse

Nom complet:

E2F transcription factor 1

Dilutions recommandées:

WB 1:1000-1:6000

Isotype:

IgG2b

MW calculé

437 aa, 47 kDa

MW observés:

55-60 kDa

Immunogen Catalog Number:

AG17363

Applications

Applications testées:

WB, ELISA

Demandes citées:

ChIP, ColP, IF, IP, WB

Spécificité de l'espèce:

Humain, rat, souris

Espèces citées:

Humain, rat, souris

Contrôles positifs:

WB : cellules LNCaP, cellules HEK-293, cellules HeLa, cellules HepG2, cellules HSC-T6, cellules Jurkat

Informations générales

Transcription factor E2F1 (E2F1), also known as RBBP3, is a transcription activator that binds DNA cooperatively with dp proteins through the E2 recognition site, 5'-TTTC[CG]CGC-3' found in the promoter region of a number of genes whose products are involved in cell cycle regulation or in DNA replication. The DRTF1/E2F complex functions in the control of cell-cycle progression from G1 to S phase. E2F-1 binds preferentially RB1 protein, in a cell-cycle dependent manner. It can mediate both cell proliferation and p53-dependent apoptosis. The calculated molecular weight of E2F1 is 47 kDa, but the sumoylated E2F1 is about 55-60 kDa.

Publications notables

Autrice	Pubmed ID	Journal	Application
Chao Zhang	36093042	iScience	WB, ColP
Peng Zhang	34659533	J Cancer	WB
Zhen Zhang	36119494	Front Oncol	WB, ChIP

Stockage

Stockage:

Stocker à -20°C. Stable pendant un an après l'expédition.

Tampon de stockage:

PBS avec azoture de sodium à 0,02 % et glycérol à 50 % pH 7,3

L'aliquotage n'est pas nécessaire pour le stockage à -20C

*** Les 20ul contiennent 0,1% de BSA.

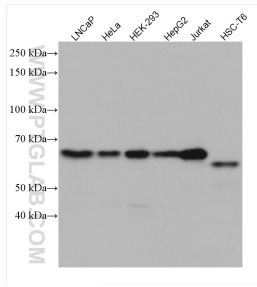
For technical support and original validation data for this product please contact:

T: 1 (888) 4PTGLAB (1-888-478-4522) (toll free in USA), or 1(312) 455-8498 (outside USA)

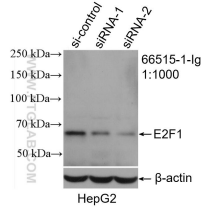
E: proteintech@ptglab.com
W: ptglab.com

This product is exclusively available under Proteintech Group brand and is not available to purchase from any other manufacturer.

Données de validation sélectionnées



Various lysates were subjected to SDS PAGE followed by western blot with 66515-1-Ig (E2F1 antibody) at dilution of 1:3000 incubated at room temperature for 1.5 hours.



WB result of E2F1 antibody (66515-1-Ig; 1:1000; incubated at room temperature for 1.5 hours) with sh-Control and sh-E2F1 transfected HepG2 cells.