

À des fins de recherche uniquement

# Anticorps Monoclonal anti-Recoverin



Numéro de catalogue: 66521-1-Ig

1 Publications

## Informations de base

Numéro de catalogue: 66521-1-Ig	Numéro d'acquisition GenBank: BC001720	Méthode de purification: Purification par protéine G
Taille: 150ul , Concentration: 1700 µg/ml by Nanodrop and 1000 µg/ml by Bradford method using BSA as the standard;	Identification du gène (NCBI): 5957	CloneNo.: 3B8E8
Hôte: Mouse	Nom complet: recoverin	Dilutions recommandées: WB 1:2500-1:10000
Isotype: IgG1	MW calculé: 24 kDa	
Immunogen Catalog Number: AG0119	MW observés: 23 kDa	

## Applications

Applications testées: WB, ELISA	Contrôles positifs: WB : tissu rétinien de porc, tissu rétinien de rat
Demandes citées: WB	
Spécificité de l'espèce: Humain, porc, rat, souris	
Espèces citées: Humain	

## Informations générales

Recoverin, belonging to a family of the neuronal calcium sensor (NCS) proteins, has a restricted expression in retinal photoreceptors or neurons or neuroendocrine cells. It has been suggested to play a role in light and dark adaptation by regulating rhodopsin phosphorylation. Recently, it has been found that autoantibodies against recoverin (24 kDa) have been strongly associated with cancer-associated retinopathy (CAR) syndrome, a paraneoplastic disease of the retina. But functions of recoverin in cancer cells remain unknown.

## Publications notables

Autrice	Pubmed ID	Journal	Application
Lisheng Chen	35882889	Sci Rep	WB

## Stockage

Stockage:  
Stocker à -20°C. Stable pendant un an après l'expédition.  
Tampon de stockage:  
PBS avec azoture de sodium à 0,02 % et glycérol à 50 % pH 7,3  
L'aliquotage n'est pas nécessaire pour le stockage à -20C

\*\*\* Les 20ul contiennent 0,1% de BSA.

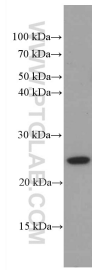
For technical support and original validation data for this product please contact:

T: 1 (888) 4PTGLAB (1-888-478-4522) (toll free in USA), or 1(312) 455-8498 (outside USA)

E: proteintech@ptglab.com  
W: ptglab.com

This product is exclusively available under Proteintech Group brand and is not available to purchase from any other manufacturer.

## Données de validation sélectionnées



pig retina tissue were subjected to SDS PAGE followed by western blot with 66521-1-Ig (Recoverin antibody) at dilution of 1:5000 incubated at room temperature for 1.5 hours.