

À des fins de recherche uniquement

# Anticorps Monoclonal anti-IGF2BP3

Numéro de catalogue: 66526-1-Ig **1 Publications**



## Informations de base

<b>Numéro de catalogue:</b> 66526-1-Ig	<b>Numéro d'acquisition GenBank:</b> BC065269	<b>Méthode de purification:</b> Purification par protéine G
<b>Taille:</b> 150ul , Concentration: 747 µg/ml by Bradford method using BSA as the standard;	<b>Identification du gène (NCBI):</b> 10643	<b>CloneNo.:</b> 2C10B11
<b>Hôte:</b> Mouse	<b>Nom complet:</b> insulin-like growth factor 2 mRNA binding protein 3	<b>Dilutions recommandées:</b> WB 1:1000-1:6000
<b>Isotype:</b> IgG1	<b>MW calculé</b> 64 kDa	
<b>Immunogen Catalog Number:</b> AG6349	<b>MW observés:</b> 65 kDa	

## Applications

### Applications testées:

WB, ELISA

### Demandes citées:

WB

### Spécificité de l'espèce:

Humain, rat, souris

### Espèces citées:

Humain

### Contrôles positifs:

WB : cellules HeLa, cellules HEK-293, cellules HSC-T6, cellules Jurkat, cellules NIH/3T3

## Informations générales

IGF2BP3, also named as IMP3, KOC1 and VICKZ3, belongs to the RRM IMP/VICKZ family. It is one of the RNA binding proteins involved in mRNA localization and translational control. IGF2BP3 is expressed during embryogenesis, as well as in some malignant tumors. It can be used as an independent prognostic factor for osteosarcoma.

## Publications notables

Autrice	Pubmed ID	Journal	Application
Luis Daniel Cruz-Zaragoza	34672953	Cell	WB

## Stockage

### Stockage:

Stocker à -20°C. Stable pendant un an après l'expédition.

### Tampon de stockage:

PBS avec azoture de sodium à 0,02 % et glycérol à 50 % pH 7,3

L'aliquotage n'est pas nécessaire pour le stockage à -20C

\*\*\* Les 20ul contiennent 0,1% de BSA.

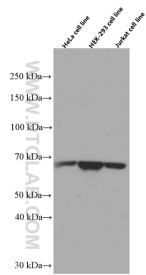
For technical support and original validation data for this product please contact:

T: 1 (888) 4PTGLAB (1-888-478-4522) (toll free in USA), or 1(312) 455-8498 (outside USA)

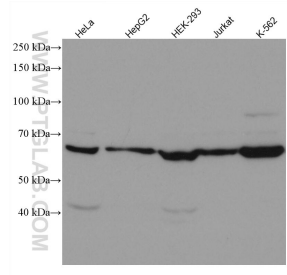
E: [proteintech@ptglab.com](mailto:proteintech@ptglab.com)  
W: [ptglab.com](http://ptglab.com)

This product is exclusively available under Proteintech Group brand and is not available to purchase from any other manufacturer.

## Données de validation sélectionnées



Various cells were subjected to SDS PAGE followed by western blot with 66526-1-Ig (IGF2BP3 antibody) at dilution of 1:3000 incubated at room temperature for 1.5 hours.



Various lysates were subjected to SDS PAGE followed by western blot with 66526-1-Ig (IGF2BP3 antibody) at dilution of 1:5000 incubated at room temperature for 1.5 hours.