

À des fins de recherche uniquement

Anticorps Monoclonal anti-TOP2A

Numéro de catalogue: 66541-1-Ig

Phare

3 Publications



Informations de base

Numéro de catalogue: 66541-1-Ig	Numéro d'acquisition GenBank: BC140791	Méthode de purification: Purification par protéine A
Taille: 150ul, Concentration: 2200 µg/ml by Nanodrop and 1000 µg/ml by Bradford method using BSA as the standard;	Identification du gène (NCBI): 7153	CloneNo.: 1E12B3
Hôte: Mouse	Nom complet: topoisomerase (DNA) II alpha 170kDa	Dilutions recommandées: WB 1:2500-1:10000 IHC 1:250-1:1000 IF 1:50-1:500
Isotype: IgG2a	MW calculé: 1531 aa, 174 kDa	
Immunogen Catalog Number: AG19551	MW observés: 174 kDa	

Applications

Applications testées:

IF, IHC, WB, ELISA

Demandes citées:

IHC, WB

Spécificité de l'espèce:

Humain

Espèces citées:

Humain

Remarque-IHC: il est suggéré de démasquer l'antigène avec un tampon de TE buffer pH 9,0; (*) A défaut, 'le démasquage de l'antigène peut être effectué avec un tampon citrate pH 6,0.

Contrôles positifs:

WB : cellules HeLa, cellules HEK-293, cellules HepG2, cellules Jurkat, cellules LO2

IHC : tissu de cancer du poumon humain,

IF : cellules HepG2,

Informations générales

TOP2A, also named as TOP2, belongs to the type II topoisomerase family. Topoisomerase II makes double-strand breaks. TOP2 control the topological states of DNA by transient breakage and subsequent rejoining of DNA strands. TOP2A may play a role in regulating the period length of ARNTL/BMAL1 transcriptional oscillation. DNA topoisomerase IIa (170 kDa, TOP2a/170) is essential in proliferating cells by resolving DNA topological entanglements during chromosome condensation, replication, and segregation.

Publications notables

Autrice	Pubmed ID	Journal	Application
Huijia Fu	36138481	Reprod Biol Endocrinol	WB,IHC
Yufeng Zhang	35912241	Front Oncol	WB,IHC
Ke Wang	31816603	Aging (Albany NY)	IHC

Stockage

Stockage:

Stocker à -20°C. Stable pendant un an après l'expédition.

Tampon de stockage:

PBS avec azoture de sodium à 0,02 % et glycérol à 50 % pH 7,3

L'aliquotage n'est pas nécessaire pour le stockage à -20C

*** Les 20ul contiennent 0,1% de BSA.

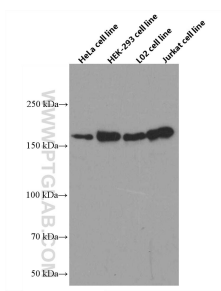
For technical support and original validation data for this product please contact:

T: 1 (888) 4PTGLAB (1-888-478-4522) (toll free in USA), or 1(312) 455-8498 (outside USA)

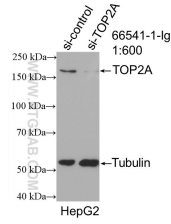
E: proteintech@ptglab.com
W: ptglab.com

This product is exclusively available under Proteintech Group brand and is not available to purchase from any other manufacturer.

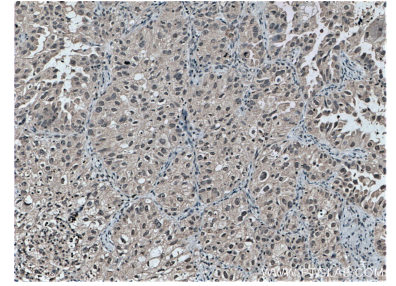
Données de validation sélectionnées



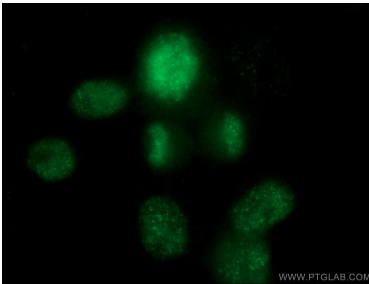
Various cells were subjected to SDS PAGE followed by western blot with 66541-1-Ig (TOP2A antibody) at dilution of 1:5000 incubated at room temperature for 1.5 hours.



WB result of TOP2A antibody (66541-1-Ig; 1:600; incubated at room temperature for 1.5 hours) with sh-Control and sh-TOP2A transfected HepG2 cells.



Immunohistochemical analysis of paraffin-embedded human lung cancer tissue slide using 66541-1-Ig (TOP2A antibody) at dilution of 1:500 (under 10x lens. Heat mediated antigen retrieval with Tris-EDTA buffer (pH 9.0)).



Immunofluorescent analysis of (4% PFA) fixed HepG2 cells using 66541-1-Ig (TOP2A antibody) at dilution of 1:100 and Alexa Fluor 488-conjugated AffiniPure Goat Anti-Mouse IgG(H+L).