

À des fins de recherche uniquement

Anticorps Monoclonal anti-STAT1

Numéro de catalogue: 66545-1-Ig

Phare

14 Publications



Informations de base

Numéro de catalogue: 66545-1-Ig	Numéro d'acquisition GenBank: BC002704	Méthode de purification: Purification par protéine A
Taille: 150ul, Concentration: 2000 µg/ml by Nanodrop and 1000 µg/ml by Bradford method using BSA as the standard;	Identification du gène (NCBI): 6772	CloneNo.: 1F7C6
Hôte: Mouse	Nom complet: signal transducer and activator of transcription 1, 91kDa	Dilutions recommandées: WB 1:5000-1:50000 IHC 1:200-1:800
Isotype: IgG2a	MW calculé: 83 kDa	
Immunogen Catalog Number: AG0199	MW observés: 84 kDa	

Applications

Applications testées:

IHC, WB, ELISA

Demandes citées:

CoIP, IF, IHC, IP, WB

Spécificité de l'espèce:

Humain, rat, souris

Espèces citées:

Humain, porc, souris

Remarque-IHC: il est suggéré de démasquer l'antigène avec un tampon de TE buffer pH 9,0; (*) À défaut, 'le démasquage de l'antigène peut être 'effectué avec un tampon citrate pH 6,0.

Contrôles positifs:

WB : cellules LNCaP, cellules HEK-293, cellules HeLa, cellules HSC-T6, cellules Jurkat, cellules MCF-7, cellules NIH/3T3

IHC : tissu de tumeur ovarienne humain, tissu d'amygdalite humain

Informations générales

STAT1 (signal transducers and activators of transcription 1) is a member of the STAT protein family. In response to cytokines and growth factors, STAT family members are phosphorylated by the receptor associated kinases, and then form homo- or heterodimers that translocate to the cell nucleus where they act as transcription activators. Various ligands, including interferons- and -, EGF, PDGF and IL-6, can activate STAT1. STAT1 protein mediates the expression of a variety of genes, which is thought to be important for cell viability in response to different cell stimuli and pathogens.

Publications notables

Autrice	Pubmed ID	Journal	Application
Huimin Liu	36315588	PLoS Pathog	WB,IP
Shiguan Wang	30286793	Arthritis Res Ther	WB,CoIP
Teng Lil	34818332	PLoS Negl Trop Dis	WB

Stockage

Stockage:

Stocker à -20°C. Stable pendant un an après l'expédition.

Tampon de stockage:

PBS avec azoture de sodium à 0,02 % et glycérol à 50 % pH 7,3

L'aliquotage n'est pas nécessaire pour le stockage à -20C

*** Les 20ul contiennent 0,1% de BSA.

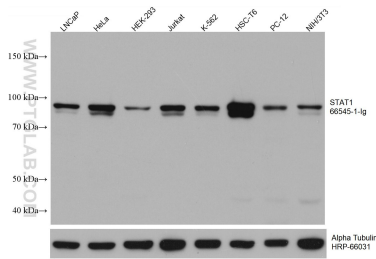
For technical support and original validation data for this product please contact:

T: 1 (888) 4PTGLAB (1-888-478-4522) (toll free in USA), or 1(312) 455-8498 (outside USA)

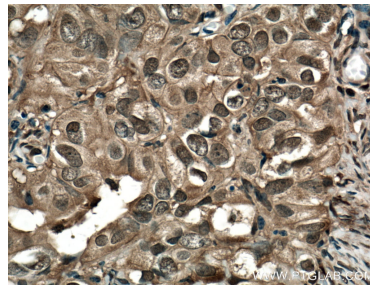
E: proteintech@ptglab.com
W: ptglab.com

This product is exclusively available under Proteintech Group brand and is not available to purchase from any other manufacturer.

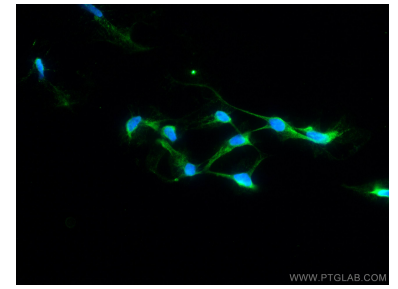
Données de validation sélectionnées



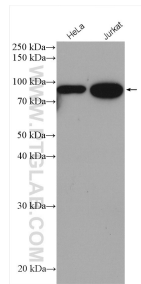
Various lysates were subjected to SDS PAGE followed by western blot with 66545-1-Ig (STAT1 antibody) at dilution of 1:10000 incubated at room temperature for 1.5 hours. The membrane was stripped and reblotted with HRP-conjugated Alpha Tubulin Monoclonal antibody (HRP-66031) as loading control.



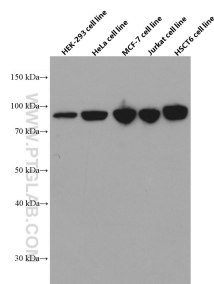
Immunohistochemical analysis of paraffin-embedded human ovary tumor tissue slide using 66545-1-Ig (STAT1 antibody) at dilution of 1:400 (under 40x lens. Heat mediated antigen retrieval with Tris-EDTA buffer (pH 9.0)).



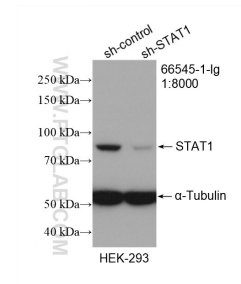
Immunofluorescent analysis of (4% PFA) fixed HEK-293 cells using STAT1 antibody (66545-1-Ig, Clone: 1F7C6) at dilution of 1:800 and CoraLite®488-Conjugated AffiniPure Goat Anti-Mouse IgG(H+L).



Various lysates were subjected to SDS PAGE followed by western blot with 66545-1-Ig (STAT1 antibody) at dilution of 1:2000 incubated at room temperature for 1.5 hours.



Various cells were subjected to SDS PAGE followed by western blot with 66545-1-Ig (STAT1 antibody) at dilution of 1:5000 incubated at room temperature for 1.5 hours.



WB result of STAT1 antibody (66545-1-Ig; 1:8000; incubated at room temperature for 1.5 hours) with sh-Control and sh-STAT1 transfected HEK-293 cells.