

À des fins de recherche uniquement

# Anticorps Monoclonal anti-YME1L1

Numéro de catalogue: 66551-1-Ig Phare



## Informations de base

<b>Numéro de catalogue:</b> 66551-1-Ig	<b>Numéro d'acquisition GenBank:</b> BC023507	<b>Méthode de purification:</b> Purification par protéine G
<b>Taille:</b> 150ul , Concentration: 1300 µg/ml by Nanodrop and 1000 µg/ml by Bradford method using BSA as the standard;	<b>Identification du gène (NCBI):</b> 10730 <b>Nom complet:</b> YME1-like 1 ( <i>S. cerevisiae</i> )	<b>CloneNo.:</b> 2B7E4 <b>Dilutions recommandées:</b> WB 1:1000-1:6000 IHC 1:150-1:600
<b>Hôte:</b> Mouse	<b>MW calculé</b> 716 aa, 80 kDa	
<b>Isotype:</b> IgG1	<b>MW observés:</b> 63 kDa	
<b>Immunogen Catalog Number:</b> AG2069		

## Applications

### Applications testées:

IHC, WB, ELISA

### Spécificité de l'espèce:

Humain, rat, souris

**Remarque-IHC: il est suggéré de démasquer l'antigène avec un tampon de TE buffer pH 9,0; (\*) À défaut, 'le démasquage de l'antigène peut être 'effectué avec un tampon citrate pH 6,0.**

### Contrôles positifs:

**WB :** cellules A549, cellules HEK-293, cellules HeLa, cellules HSC-T6, cellules Jurkat, cellules MCF-7, cellules NIH/3T3, cellules Raji, cellules THP-1

**IHC :** tissu rénal humain,

## Informations générales

YME1L1(ATP-dependent zinc metalloprotease) is also named as FTSH1, YME1L, Meg-4, PAMP. YME1L1 plays a phylogenetically conserved role in mitochondrial protein metabolism. It also ensures cell proliferation, maintains normal cristae morphology and complex I respiration activity, promotes antiapoptotic activity and protects mitochondria from the accumulation of oxidatively damaged membrane proteins. YME1L1 can prevent mitochondrial DNA inserting into nuclear. It has 3 isoforms produced by alternative splicing with the molecular weight of 86 kDa, 80 kDa and 76 kDa. This protein can migrate with a molecular weight of about 55-63 kDa, which is the size of the mature YME1L1 protein(PMID:22252130; 22354088).

## Stockage

### Stockage:

Stocker à -20°C. Stable pendant un an après l'expédition.

### Tampon de stockage:

PBS avec azoture de sodium à 0,02 % et glycérol à 50 % pH 7,3

L'aliquotage n'est pas nécessaire pour le stockage à -20C

\*\*\* Les 20ul contiennent 0,1% de BSA.

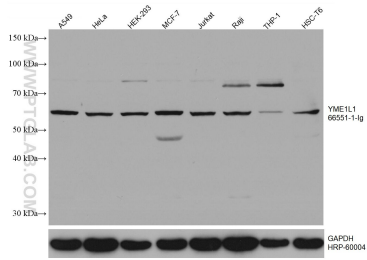
For technical support and original validation data for this product please contact:

T: 1 (888) 4PTGLAB (1-888-478-4522) (toll free in USA), or 1(312) 455-8498 (outside USA)

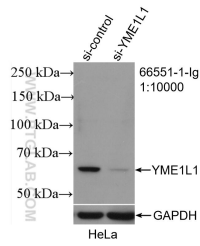
E: [proteintech@ptglab.com](mailto:proteintech@ptglab.com)  
W: [ptglab.com](http://ptglab.com)

**This product is exclusively available under Proteintech Group brand and is not available to purchase from any other manufacturer.**

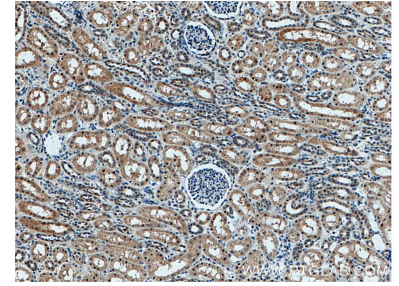
## Données de validation sélectionnées



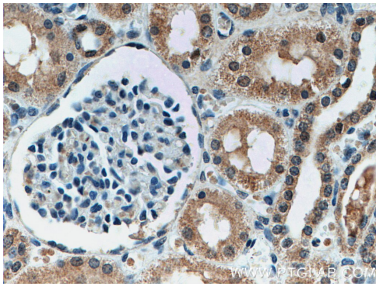
Various lysates were subjected to SDS PAGE followed by western blot with 66551-1-Ig (YME1L1 antibody) at dilution of 1:3000 incubated at room temperature for 1.5 hours. The membrane was stripped and reblotted with HRP-conjugated GAPDH Monoclonal antibody (HRP-60004) as loading control.



WB result of YME1L1 antibody (66551-1-Ig; 1:10000; incubated at room temperature for 1.5 hours) with sh-Control and sh-YME1L1 transfected HeLa cells.



Immunohistochemical analysis of paraffin-embedded human kidney tissue slide using 66551-1-Ig (YME1L1 antibody) at dilution of 1:300 (under 10x lens. Heat mediated antigen retrieval with Tris-EDTA buffer (pH 9.0).



Immunohistochemical analysis of paraffin-embedded human kidney tissue slide using 66551-1-Ig (YME1L1 antibody) at dilution of 1:300 (under 40x lens. Heat mediated antigen retrieval with Tris-EDTA buffer (pH 9.0).