

À des fins de recherche uniquement

# Anticorps Monoclonal anti-PEDF

Numéro de catalogue: 66554-1-Ig



## Informations de base

Numéro de catalogue: 66554-1-Ig	Numéro d'acquisition GenBank: BC013984	Méthode de purification: Purification par protéine A
Taille: 150ul , Concentration: 1000 µg/ml by Nanodrop and 1000 µg/ml by Bradford method using BSA as the standard;	Identification du gène (NCBI): 5176	CloneNo.: 2C5C8
Hôte: Mouse	Nom complet: serpin peptidase inhibitor, clade F (alpha-2 antiplasmin, pigment epithelium derived factor), member 1	Dilutions recommandées: WB 1:2000-1:10000
Isotype: IgG1	MW calculé 418 aa, 46 kDa	
Immunogen Catalog Number: AG26660	MW observés: 46-50 kDa	

## Applications

Applications testées:  
WB, ELISA  
Spécificité de l'espèce:  
Humain, porc

Contrôles positifs:

WB : tissu plasmatique humain, tissu plasmatique de porc, tissu sanguin humain

## Informations générales

PEDF also known as serpin F1 (SERPINF1), is a multifunctional secreted protein that has anti-angiogenic, anti-tumorigenic, and neurotrophic functions. It is an approximately 50-kDa secreted protein that is widely expressed, including by osteoblasts and osteoclasts. PEDF is also one of the most abundant secretory products of adipocytes, and circulating concentrations of PEDF correlate positively with body fat mass and INS resistance. PEDF is a neurotrophic factor involved in neuronal differentiation in retinoblastoma cells. Mutations in this gene were found in individuals with osteogenesis imperfecta, type VI.

## Stockage

Stockage:  
Stocker à -20°C. Stable pendant un an après l'expédition.  
Tampon de stockage:  
PBS avec azoture de sodium à 0,02 % et glycérol à 50 % pH 7,3  
L'aliquotage n'est pas nécessaire pour le stockage à -20C

\*\*\* Les 20ul contiennent 0,1% de BSA.

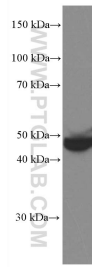
For technical support and original validation data for this product please contact:

T: 1 (888) 4PTGLAB (1-888-478-4522) (toll free  
in USA), or 1(312) 455-8498 (outside USA)

E: proteintech@ptglab.com  
W: ptglab.com

This product is exclusively available under Proteintech Group brand and is not available to purchase from any other manufacturer.

## Données de validation sélectionnées



human plasma were subjected to SDS PAGE followed by western blot with 66554-1-Ig (PEDF antibody) at dilution of 1:5000 incubated at room temperature for 1.5 hours.