

À des fins de recherche uniquement

Anticorps Monoclonal anti-BCL10

Numéro de catalogue: 66556-1-Ig **1 Publications**



Informations de base

Numéro de catalogue: 66556-1-Ig	Numéro d'acquisition GenBank: BC053617	Méthode de purification: Purification par protéine A
Taille: 150ul , Concentration: 1700 µg/ml by Nanodrop and 1000 µg/ml by Bradford method using BSA as the standard;	Identification du gène (NCBI): 8915	CloneNo.: 2E8G5
Hôte: Mouse	Nom complet: B-cell CLL/lymphoma 10	Dilutions recommandées: WB 1:1000-1:6000 IHC 1:350-1:1400 IF 1:200-1:800
Isotype: IgG1	MW calculé 233 aa, 26 kDa	
Immunogen Catalog Number: AG12162	MW observés: 30-32 kDa	

Applications

Applications testées:
FC, IF, IHC, WB, ELISA

Demandes citées:
WB

Spécificité de l'espèce:
Humain

Espèces citées:
Humain

Remarque-IHC: il est suggéré de démasquer l'antigène avec un tampon de TE buffer pH 9,0; (*) À défaut, 'le démasquage de l'antigène peut être 'effectué avec un tampon citrate pH 6,0.

Contrôles positifs:

WB : cellules HeLa, cellules HCT 116, cellules HepG2, cellules Jurkat, cellules K-562, cellules MOLT-4, cellules Raji, cellules Ramos

IHC : tissu d'amygdalite humain, tissu de lymphome humain

IF : cellules HepG2,

Informations générales

Publications notables

Autrice	Pubmed ID	Journal	Application
Yinwu Shang	31178130	Biochem Biophys Res Commun	WB

Stockage

Stockage:

Stocker à -20°C. Stable pendant un an après l'expédition.

Tampon de stockage:

PBS avec azoture de sodium à 0,02 % et glycérol à 50 % pH 7,3

L'aliquotage n'est pas nécessaire pour le stockage à -20C

*** Les 20ul contiennent 0,1% de BSA.

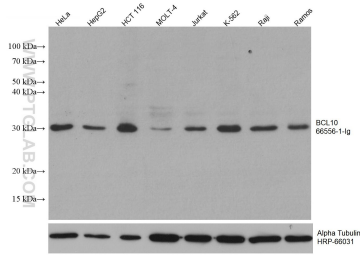
For technical support and original validation data for this product please contact:

T: 1 (888) 4PTGLAB (1-888-478-4522) (toll free in USA), or 1(312) 455-8498 (outside USA)

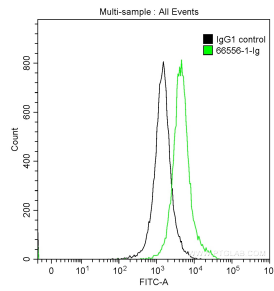
E: proteintech@ptglab.com
W: ptglab.com

This product is exclusively available under Proteintech Group brand and is not available to purchase from any other manufacturer.

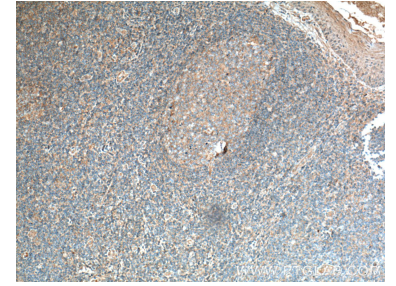
Données de validation sélectionnées



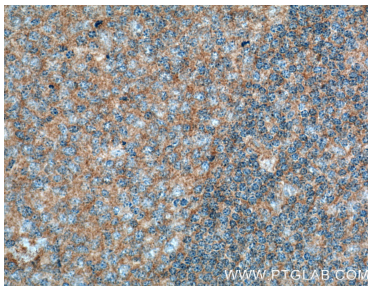
Various lysates were subjected to SDS PAGE followed by western blot with 66556-1-Ig (BCL10 antibody) at dilution of 1:3000 incubated at room temperature for 1.5 hours. The membrane was stripped and reblotted with HRP-conjugated Alpha Tubulin Monoclonal antibody (HRP-66031) as loading control.



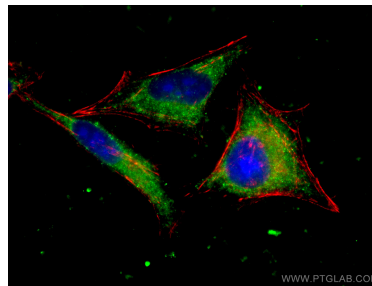
1×10^6 Jurkat cells were intracellularly stained with 0.2 μ g Anti-Human BCL10 (66556-1-Ig, Clone:2E8G5) and CoraLite®488-Conjugated AffiniPure Goat Anti-Mouse IgG(H+L) at dilution 1:1000 (green), and 0.2 μ g Mouse IgG1 Isotype Control (66360-1-Ig, Clone: T1F8D3F10) (black). Cells were fixed with 90% MeOH.



Immunohistochemical analysis of paraffin-embedded human tonsillitis tissue slide using 66556-1-Ig (BCL10 antibody) at dilution of 1:700 (under 10x lens. Heat mediated antigen retrieval with Tris-EDTA buffer (pH 9.0).



Immunohistochemical analysis of paraffin-embedded human tonsillitis tissue slide using 66556-1-Ig (BCL10 antibody) at dilution of 1:700 (under 40x lens. Heat mediated antigen retrieval with Tris-EDTA buffer (pH 9.0).



Immunofluorescent analysis of (-20°C Ethanol) fixed Hep2 cells using BCL10 antibody (66556-1-Ig, Clone: 2E8G5) at dilution of 1:400 and CoraLite®488-Conjugated AffiniPure Goat Anti-Mouse IgG(H+L), CL594-Phalloidin (red).