

À des fins de recherche uniquement

Anticorps Monoclonal anti-PLDN

Numéro de catalogue: 66558-1-Ig



Informations de base

Numéro de catalogue: 66558-1-Ig	Numéro d'acquisition GenBank: BC004819	Méthode de purification: Purification par protéine A
Taille: 150ul, Concentration: 1200 µg/ml by Nanodrop and 1000 µg/ml by Bradford method using BSA as the standard;	Identification du gène (NCBI): 26258	CloneNo.: 4F4C11
Hôte: Mouse	Nom complet: pallidin homolog (mouse)	Dilutions recommandées: WB 1:500-1:3000
Isotype: IgG1	MW calculé 23-24 kDa	
Immunogen Catalog Number: AG18095	MW observés: 26 kDa	

Applications

Applications testées: WB, ELISA	Contrôles positifs: WB : cellules HeLa, cellules HEK-293, cellules Jurkat, cellules MCF-7, cellules NIH/3T3, cellules RAW 264.7, cellules ROS1728
Spécificité de l'espèce: Humain, rat, souris	

Informations générales

Pallidin, also named as PLDN and PA, is involved in the development of lysosome-related organelles, such as melanosomes and platelet-dense granules. It may play a role in intracellular vesicle trafficking, particularly in the vesicle-docking and fusion process. Pallidin interacts with syntaxin-12 which is a t-SNARE protein that mediates vesicle docking and fusion.

Stockage

Stockage:
Stocker à -20°C. Stable pendant un an après l'expédition.
Tampon de stockage:
PBS avec azoture de sodium à 0,02 % et glycérol à 50 % pH 7,3
L'aliquotage n'est pas nécessaire pour le stockage à -20C

*** Les 20ul contiennent 0,1% de BSA.

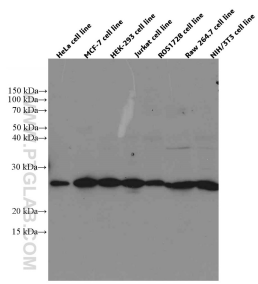
For technical support and original validation data for this product please contact:

T: 1 (888) 4PTGLAB (1-888-478-4522) (toll free
in USA), or 1(312) 455-8498 (outside USA)

E: proteintech@ptglab.com
W: ptglab.com

This product is exclusively available under Proteintech Group brand and is not available to purchase from any other manufacturer.

Données de validation sélectionnées



Various lysates were subjected to SDS PAGE followed by western blot with 66558-1-Ig (PLDN antibody) at dilution of 1:1500 incubated at room temperature for 1.5 hours.