

À des fins de recherche uniquement

# Anticorps Monoclonal anti-Tom22

Numéro de catalogue: 66562-1-Ig **2 Publications**



## Informations de base

Numéro de catalogue: 66562-1-Ig	Numéro d'acquisition GenBank: BC009363	Méthode de purification: Purification par protéine A
Taille: 150ul, Concentration: 1800 µg/ml by Nanodrop and 1000 µg/ml by Bradford method using BSA as the standard;	Identification du gène (NCBI): 56993	CloneNo.: 1C2B11
Hôte: Mouse	Nom complet: translocase of outer mitochondrial membrane 22 homolog (yeast)	Dilutions recommandées: WB 1:5000-1:50000 IHC 1:50-1:500 IF 1:400-1:1600
Isotype: IgG2a	MW calculé: 15 kDa	
Immunogen Catalog Number: AG1797	MW observés: 22 kDa	

## Applications

Applications testées:  
FC, IF, IHC, WB, ELISA

Demandes citées:  
IF, WB

Spécificité de l'espèce:  
Humain

Espèces citées:  
Humain, souris

**Remarque-IHC: il est suggéré de démasquer l'antigène avec un tampon de TE buffer pH 9,0; (\*) A défaut, 'le démasquage de l'antigène peut être effectué avec un tampon citrate pH 6,0.**

Contrôles positifs:

WB : cellules A431, cellules HEK-293, cellules HeLa, cellules HepG2, cellules Jurkat, cellules K-562, cellules LO2, cellules Raji, cellules T-47D

IHC : tissu rénal humain, tissu de cancer du côlon humain

IF : cellules HepG2,

## Informations générales

Tom22 is a central receptor component of the translocase of the outer membrane of mitochondria responsible for the recognition and translocation of cytosolically synthesized mitochondrial preproteins. It is showed in UniProt that phosphorylation is performed at three positions of this protein which may increase the molecular weight. Catalog#66562-1-Ig recognises the 22 kDa protein larger than the calculated MW which is 15 kDa. Besides, it has been reported the MV of TOMM22 is 22 kDa (PMID:19285029).

## Publications notables

Autrice	Pubmed ID	Journal	Application
Qiang Wang	34446444	Science	WB
Wenjie Bao	35933512	Nat Commun	IF

## Stockage

Stockage:

Stocker à -20°C. Stable pendant un an après l'expédition.

Tampon de stockage:

PBS avec azoture de sodium à 0,02 % et glycérol à 50 % pH 7,3

L'aliquotage n'est pas nécessaire pour le stockage à -20C

\*\*\* Les 20ul contiennent 0,1% de BSA.

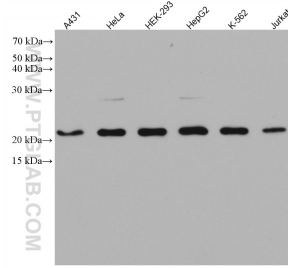
For technical support and original validation data for this product please contact:

T: 1 (888) 4PTGLAB (1-888-478-4522) (toll free in USA), or 1(312) 455-8498 (outside USA)

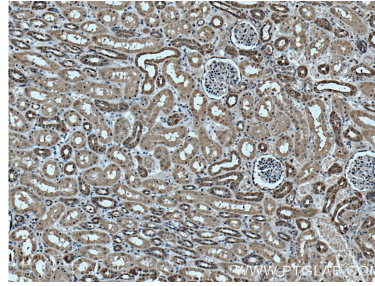
E: proteintech@ptglab.com  
W: ptglab.com

This product is exclusively available under Proteintech Group brand and is not available to purchase from any other manufacturer.

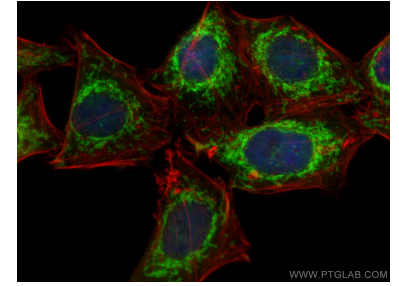
## Données de validation sélectionnées



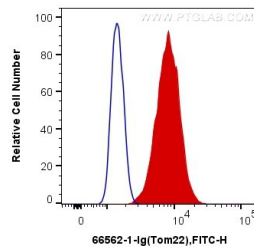
Various lysates were subjected to SDS PAGE followed by western blot with 66562-1-Ig (Tom22 antibody) at dilution of 1:10000 incubated at room temperature for 1.5 hours.



Immunohistochemical analysis of paraffin-embedded human kidney tissue slide using 66562-1-Ig (Tom22 antibody) at dilution of 1:200 (under 10x lens. Heat mediated antigen retrieval with Tris-EDTA buffer (pH 9.0).



Immunofluorescent analysis of (4% PFA) fixed HepG2 cells using Tom22 antibody (66562-1-Ig, Clone: 1C2B11) at dilution of 1:800 and CoraLite®488-Conjugated AffiniPure Goat Anti-Mouse IgG(H+L), CL594-Phalloidin (red).



1X10<sup>6</sup> HEK-293 cells were intracellularly stained with 0.4 ug Anti-Human Tom22 (66562-1-Ig, Clone:1C2B11) and CoraLite®488-Conjugated AffiniPure Goat Anti-Mouse IgG(H+L) at dilution 1:1000 (red), or 0.4 ug Control Antibody. Cells were fixed with 4% PFA and permeabilized with Flow Cytometry Perm Buffer (PF00011-C).