

À des fins de recherche uniquement

Anticorps Monoclonal anti-LATS1

Numéro de catalogue: 66569-1-Ig **Phare**



Informations de base

Numéro de catalogue: 66569-1-Ig	Numéro d'acquisition GenBank: BC015665	Méthode de purification: Purification par protéine G
Taille: 150ul , Concentration: 700 µg/ml by Bradford method using BSA as the standard;	Identification du gène (NCBI): 9113	CloneNo.: 2A8F1
Hôte: Mouse	Nom complet: LATS, large tumor suppressor, homolog 1 (Drosophila)	Dilutions recommandées: WB 1:2000-1:10000
Isotype: IgG1	MW calculé 15 kDa, 127 kDa	
Immunogen Catalog Number: AG11140	MW observés: 140-150 kDa, 120 kDa	

Applications

Applications testées: WB, ELISA	Contrôles positifs: WB : cellules T-47D, cellules HEK-293, cellules HeLa, cellules HepG2, cellules Jurkat, cellules K-562, cellules MCF-7
Spécificité de l'espèce: Humain	

Informations générales

LATS1(Large tumor suppressor homolog 1) is also named as WARTS and belongs to the AGC Ser/Thr protein kinase family. The gene encodes a highly conserved (from fly to human) protein kinase that plays a crucial role in the prevention of tumor formation by controlling the progression of mitosis. The expression of both long(170 kDa) and short lats1 isoforms(120 kDa) in vertebrate retinal cells raises the possibility that these lats1 proteins may act as negative key regulators of the cell cycle each of them performing a unique role (PMID:15777619). In mammalian cells, LATS1 was phosphorylated in a cell cycle-dependent manner and complexed with CDC2 in early mitosis (PMID:9988268). LATS1 also can be detected as 120 kDa and 140-150 kDa, and play a key role in the regulation of Hippo pathway (PMID: 27940445).

Stockage

Stockage:
Stocker à -20°C. Stable pendant un an après l'expédition.
Tampon de stockage:
PBS avec azoture de sodium à 0,02 % et glycérol à 50 % pH 7,3
L'aliquotage n'est pas nécessaire pour le stockage à -20C

*** Les 20ul contiennent 0,1% de BSA.

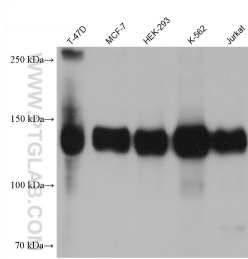
For technical support and original validation data for this product please contact:

T: 1 (888) 4PTGLAB (1-888-478-4522) (toll free in USA), or 1(312) 455-8498 (outside USA)

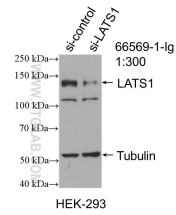
E: proteintech@ptglab.com
W: ptglab.com

This product is exclusively available under Proteintech Group brand and is not available to purchase from any other manufacturer.

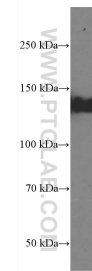
Données de validation sélectionnées



Various lysates were subjected to SDS PAGE followed by western blot with 66569-1-Ig (LATS1 antibody) at dilution of 1:5000 incubated at room temperature for 1.5 hours.



WB result of LATS1 antibody (66569-1-Ig; 1:300; incubated at room temperature for 1.5 hours) with sh-Control and sh-LATS1 transfected HepG2 cells.



HepG2 cells were subjected to SDS PAGE followed by western blot with 66569-1-Ig (LATS1 antibody) at dilution of 1:2000 incubated at room temperature for 1.5 hours.