

À des fins de recherche uniquement

Anticorps Monoclonal anti-TLR5

Numéro de catalogue: 66570-1-Ig



Informations de base

Numéro de catalogue: 66570-1-Ig	Numéro d'acquisition GenBank: BC109119	Méthode de purification: Purification par protéine G
Taille: 150ul, Concentration: 1500 µg/ml by Nanodrop and 1000 µg/ml by Bradford method using BSA as the standard;	Identification du gène (NCBI): 7100	CloneNo.: 4B3D2
Hôte: Mouse	Nom complet: toll-like receptor 5	Dilutions recommandées: WB 1:1000-1:6000 IF 1:400-1:1600
Isotype: IgG1	MW calculé: 858 aa, 98 kDa	
Immunogen Catalog Number: AG13840	MW observés: 100 kDa	

Applications

Applications testées: FC, IF, WB, ELISA	Contrôles positifs:
Spécificité de l'espèce: Humain, porc, rat, souris	WB : cellules A549, cellules HeLa, cellules RAW 264.7, cellules THP-1, tissu splénique de rat
	IF : cellules THP-1,

Informations générales

TLR5 belongs to the Toll-like receptor family which are important in the innate immune response to pathogens. TLRs are highly conserved from Drosophila to humans and share structural and functional similarities. TLR5 is known to recognize bacterial flagellin from invading mobile bacteria. TLR5 acts via MYD88 and TRAF6, leading to NF-kappa-B activation, cytokine secretion and the inflammatory response. Mutations in TLR5 gene have been associated with both resistance and susceptibility to systemic lupus erythematosus, and susceptibility to Legionnaire disease.

Stockage

Stockage:
Stocker à -20°C. Stable pendant un an après l'expédition.
Tampon de stockage:
PBS avec azoture de sodium à 0,02 % et glycérol à 50 % pH 7,3
L'aliquotage n'est pas nécessaire pour le stockage à -20C

*** Les 20ul contiennent 0,1% de BSA.

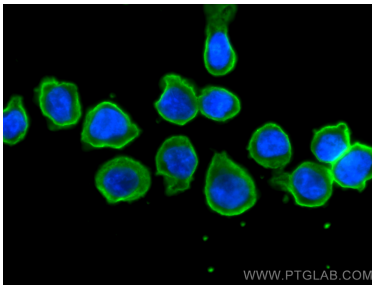
For technical support and original validation data for this product please contact:

T: 1 (888) 4PTGLAB (1-888-478-4522) (toll free in USA), or 1(312) 455-8498 (outside USA)

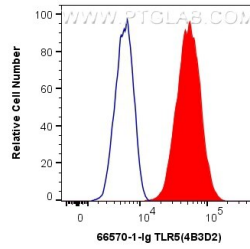
E: proteintech@ptglab.com
W: ptglab.com

This product is exclusively available under Proteintech Group brand and is not available to purchase from any other manufacturer.

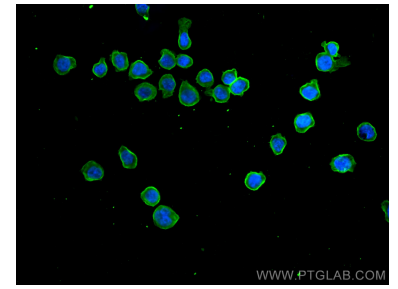
Données de validation sélectionnées



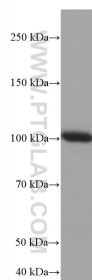
Immunofluorescent analysis of (4% PFA) fixed THP-1 cells using TLR5 antibody (66570-1-Ig, Clone: 4B3D2) at dilution of 1:800 and CoraLite®488-Conjugated AffiniPure Goat Anti-Mouse IgG(H+L).



1X10⁶ THP-1 cells were intracellularly stained with 0.4 ug Anti-Human TLR5 (66570-1-Ig, Clone:4B3D2) and CoraLite®488-Conjugated AffiniPure Goat Anti-Mouse IgG(H+L) at dilution 1:1000 (red), or 0.4 ug Mouse IgG1 Isotype Control (MOPC-21) (65124-1-Ig, Clone: MOPC-21) (blue). Cells were fixed with 4% PFA and permeabilized with Flow Cytometry Perm Buffer (PF00011-C).



Immunofluorescent analysis of (4% PFA) fixed THP-1 cells using TLR5 antibody (66570-1-Ig, Clone: 4B3D2) at dilution of 1:800 and CoraLite®488-Conjugated AffiniPure Goat Anti-Mouse IgG(H+L).



A549 cells were subjected to SDS PAGE followed by western blot with 66570-1-Ig (TLR5 antibody) at dilution of 1:3000 incubated at room temperature for 1.5 hours.