

À des fins de recherche uniquement

Anticorps Monoclonal anti-SDHA

Numéro de catalogue: 66588-1-Ig **4 Publications**



Informations de base

Numéro de catalogue: 66588-1-Ig	Numéro d'acquisition GenBank: BC001380	Méthode de purification: Purification par protéine G
Taille: 150ul , Concentration: 2100 µg/ml by Nanodrop and 1000 µg/ml by Bradford method using BSA as the standard;	Identification du gène (NCBI): 6389	CloneNo.: 5E10G12
Hôte: Mouse	Nom complet: succinate dehydrogenase complex, subunit A, flavoprotein (Fp)	Dilutions recommandées: WB 1:20000-1:80000 IHC 1:1000-1:4000 IF 1:50-1:500
Isotype: IgG1	MW calculé: 73 kDa	
Immunogen Catalog Number: AG7023	MW observés: 62-73 kDa	

Applications

Applications testées:

IF, IHC, WB, ELISA

Demandes citées:

WB

Spécificité de l'espèce:

Humain, rat, souris

Espèces citées:

Humain, souris

Remarque-IHC: il est suggéré de démasquer l'antigène avec un tampon de TE buffer pH 9,0; (*) À défaut, 'le démasquage de l'antigène peut être 'effectué avec un tampon citrate pH 6,0.

Contrôles positifs:

WB : cellules HeLa, cellules HEK-293, cellules HepG2, cellules HSC-T6, cellules Jurkat, cellules NIH/3T3, cellules RAW 264.7

IHC : tissu de cancer du foie humain,

IF : cellules HepG2,

Informations générales

SDHA, also named as SDH2, SDHF and Fp, belongs to the FAD-dependent oxidoreductase 2 family and FRD/SDH subfamily. SDHA is the flavoprotein subunit of succinate dehydrogenase (SDH) that is involved in complex II of the mitochondrial electron transport chain and is responsible for transferring electrons from succinate to ubiquinone (coenzyme Q). SDHA has 3 isoforms with the molecular mass of 73, 67 and 57 kDa, and the N-terminal (~5 kDa) can be removed in mature form. It can be detected a band of 68 kDa in cutaneous melanoma (PMID:21698147). SDHA may act as a tumor suppressor.

Publications notables

Autrice	Pubmed ID	Journal	Application
Jian Xiao	31144242	Sci China Life Sci	
Pengyu Wang	35905743	Cell Chem Biol	WB
Jiangbin Wu	37293097	bioRxiv	WB

Stockage

Stockage:

Stocker à -20°C. Stable pendant un an après l'expédition.

Tampon de stockage:

PBS avec azoture de sodium à 0,02 % et glycérol à 50 % pH 7,3

L'aliquotage n'est pas nécessaire pour le stockage à -20C

*** Les 20ul contiennent 0,1% de BSA.

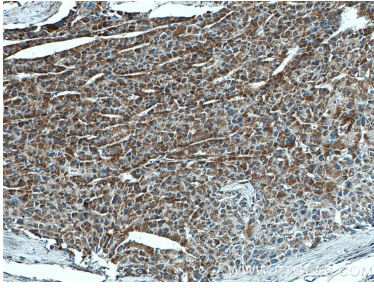
For technical support and original validation data for this product please contact:

T: 1 (888) 4PTGLAB (1-888-478-4522) (toll free in USA), or 1(312) 455-8498 (outside USA)

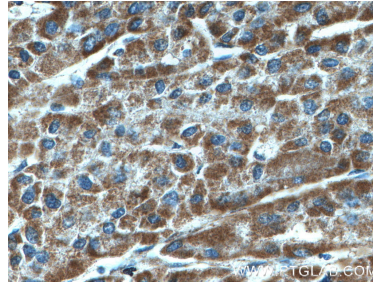
E: proteintech@ptglab.com
W: ptglab.com

This product is exclusively available under Proteintech Group brand and is not available to purchase from any other manufacturer.

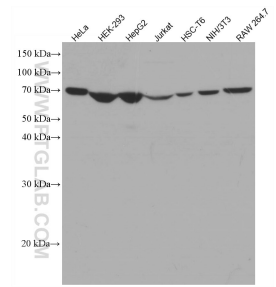
Données de validation sélectionnées



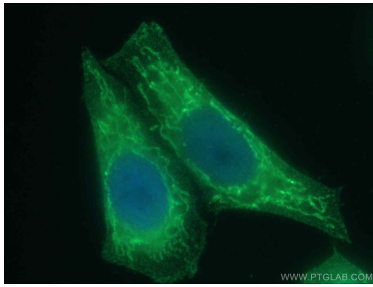
Immunohistochemical analysis of paraffin-embedded human liver cancer tissue slide using 66588-1-Ig (SDHA antibody) at dilution of 1:2000 (under 10x lens).



Immunohistochemical analysis of paraffin-embedded human liver cancer tissue slide using 66588-1-Ig (SDHA antibody) at dilution of 1:2000 (under 40x lens).



Various lysates were subjected to SDS PAGE followed by western blot with 66588-1-Ig (SDHA antibody) at dilution of 1:50000 incubated at room temperature for 1.5 hours.



Immunofluorescent analysis of (4% PFA) fixed HepG2 cells using 66588-1-Ig (SDHA antibody) at dilution of 1:100 and Alexa Fluor 488-Conjugated AffiniPure Goat Anti-Mouse IgG(H+L).