

À des fins de recherche uniquement

Anticorps Monoclonal anti-RAF1

Numéro de catalogue: 66592-1-Ig

Phare

6 Publications



Informations de base

Numéro de catalogue: 66592-1-Ig	Numéro d'acquisition GenBank: BC018119	Méthode de purification: Purification par protéine A
Taille: 150ul , Concentration: 1000 µg/ml by Bradford method using BSA as the standard;	Identification du gène (NCBI): 5894	CloneNo.: 1D6A1
Hôte: Mouse	Nom complet: v-raf-1 murine leukemia viral oncogene homolog 1	Dilutions recommandées: WB 1:1000-1:6000 IHC 1:150-1:600 IF 1:400-1:1600
Isotype: IgG2a	MW calculé 648 aa, 73 kDa	
Immunogen Catalog Number: AG25423	MW observés: 70-75 kDa	

Applications

Applications testées:

IF, IHC, WB, ELISA

Demandes citées:

WB

Spécificité de l'espèce:

Humain, souris

Espèces citées:

Humain, souris

Remarque-IHC: il est suggéré de démasquer l'antigène avec un tampon de TE buffer pH 9,0; (*) A défaut, 'le démasquage de l'antigène peut être 'effectué avec un tampon citrate pH 6,0.

Contrôles positifs:

WB : cellules HepG2, cellules DC2.4, cellules HEK-293, cellules HL-60, cellules Jurkat, cellules K-562

IHC : tissu de cancer de la prostate humain,

IF : cellules HEK-293,

Informations générales

Raf-1 proto-oncogene, serine/threonine kinase(RAF1), is a MAP kinase kinase kinase (MAP3K), which functions downstream of the Ras family of membrane associated GTPases to which it binds directly. RAF1 has two isoforms with MW of 73, 75 kDa. RAF1 plays an important role in the control of gene expression involved in the cell division cycle, apoptosis, cell differentiation and cell migration.

Publications notables

Autrice	Pubmed ID	Journal	Application
Peng Liu	36209075	Cell Mol Biol Lett	WB
Wei Li	35042538	Cancer Cell Int	WB
Wei Zheng	35116115	World J Gastrointest Oncol	WB

Stockage

Stockage:

Stocker à -20°C. Stable pendant un an après l'expédition.

Tampon de stockage:

PBS avec azoture de sodium à 0,02 % et glycérol à 50 % pH 7,3

L'aliquotage n'est pas nécessaire pour le stockage à -20C

*** Les 20ul contiennent 0,1% de BSA.

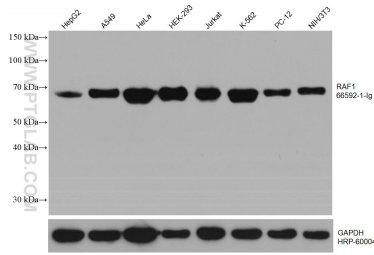
For technical support and original validation data for this product please contact:

T: 1 (888) 4PTGLAB (1-888-478-4522) (toll free in USA), or 1(312) 455-8498 (outside USA)

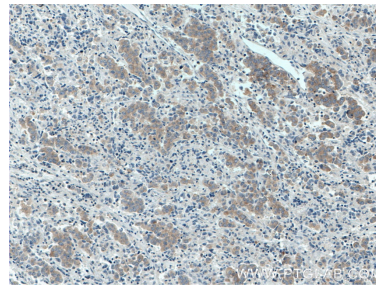
E: proteintech@ptglab.com
W: ptglab.com

This product is exclusively available under Proteintech Group brand and is not available to purchase from any other manufacturer.

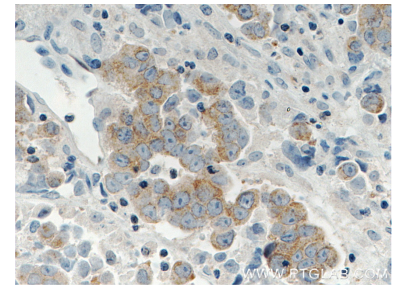
Données de validation sélectionnées



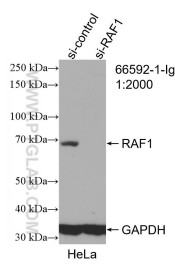
Various lysates were subjected to SDS PAGE followed by western blot with 66592-1-Ig (RAF1 antibody) at dilution of 1:3000 incubated at room temperature for 1.5 hours. The membrane was stripped and reblotted with HRP-conjugated GAPDH Monoclonal antibody (HRP-60004) as loading control.



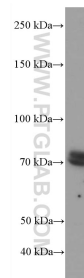
Immunohistochemical analysis of paraffin-embedded human prostate cancer tissue slide using 66592-1-Ig (RAF1 antibody) at dilution of 1:300 (under 10x lens. Heat mediated antigen retrieval with Tris-EDTA buffer (pH 9.0).



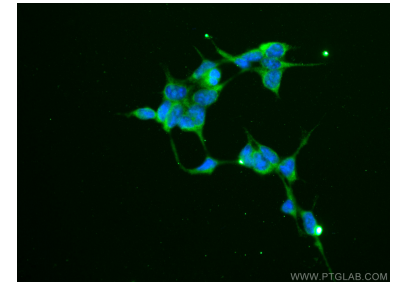
Immunohistochemical analysis of paraffin-embedded human prostate cancer tissue slide using 66592-1-Ig (RAF1 antibody) at dilution of 1:300 (under 40x lens. Heat mediated antigen retrieval with Tris-EDTA buffer (pH 9.0).



WB result of RAF1 antibody (66592-1-Ig; 1:2000; incubated at room temperature for 1.5 hours) with sh-Control and sh-RAF1 transfected HEK-293 cells.



HEK-293 cells were subjected to SDS PAGE followed by western blot with 66592-1-Ig (RAF1 antibody) at dilution of 1:3000 incubated at room temperature for 1.5 hours.



Immunofluorescent analysis of (-20°C Ethanol) fixed HEK-293 cells using RAF1 antibody (66592-1-Ig, Clone: 1D6A1) at dilution of 1:800 and CoraLite@488-Conjugated AffiniPure Goat Anti-Mouse IgG(H+L). DAPI (Blue).