

À des fins de recherche uniquement

Anticorps Monoclonal anti-KU70, XRCC6



Numéro de catalogue: 66607-1-Ig **5 Publications**

Informations de base

Numéro de catalogue: 66607-1-Ig	Numéro d'acquisition GenBank: BC008343	Méthode de purification: Purification par protéine A
Taille: 150ul, Concentration: 1000 µg/ml by Nanodrop;	Identification du gène (NCBI): 2547	CloneNo.: 3C12D9
Hôte: Mouse	Nom complet: X-ray repair complementing defective repair in Chinese hamster cells 6	Dilutions recommandées: WB 1:20000-1:100000 IHC 1:2000-1:8000 IF 1:500-1:2000
Isotype: IgG1	MW calculé: 75 kDa	
Immunogen Catalog Number: AG21301	MW observés: 70 kDa	

Applications

Applications testées:
FC, IF, IHC, WB, ELISA

Demandes citées:
CoIP, IF, IP, WB

Spécificité de l'espèce:
Humain, rat, souris

Espèces citées:
Humain, souris

Remarque-IHC: il est suggéré de démasquer l'antigène avec un tampon de TE buffer pH 9,0; (*) À défaut, le démasquage de l'antigène peut être effectué avec un tampon citrate pH 6,0.

Contrôles positifs:

WB : cellules LNCaP, cellules HEK-293, cellules HeLa, cellules HepG2, cellules HSC-T6, cellules Jurkat, cellules K-562, cellules Neuro-2a, cellules NIH/3T3, cellules RAW 264.7

IHC : tissu de cancer du sein humain, tissu de cancer du côlon humain, tissu de cancer du poumon humain

IF : cellules HeLa, cellules HepG2, tissu de cancer du sein humain

Informations générales

X-ray repair cross-complementing protein 6 (XRCC6) gene encodes subunit p70 of the p70/p80 autoantigen which has a role in DNA repair or transposition. DNA helicase II complex binds preferentially to fork-like ends of double-stranded DNA in a cell cycle-dependent manner, which may be mediated by XRCC6. XRCC6/5 can form a heterodimer, which function as a regulatory subunit of the DNA-dependent protein kinase complex DNA-PK by increasing the affinity of the catalytic subunit PRKDC to DNA, and also it can stabilize broken DNA ends and bringing them together. Otherwise, XRCC5/6 heterodimer together with APEX1 can negatively regulate of transcription.

Publications notables

Autrice	Pubmed ID	Journal	Application
Qidong Li	36417875	Cell Rep	IF
Yan Wang	33667382	Immunity	WB,IF,IP
Tao Wang	35036867	iScience	IF

Stockage

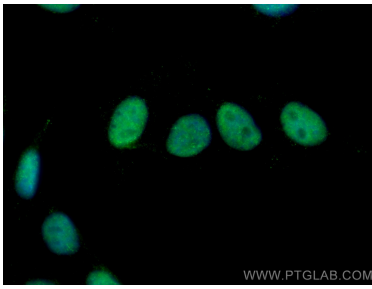
Stockage:
Stocker à -20°C. Stable pendant un an après l'expédition.
Tampon de stockage:
PBS avec azoture de sodium à 0,02 % et glycérol à 50 % pH 7,3
L'aliquotage n'est pas nécessaire pour le stockage à -20C

*** Les 20ul contiennent 0,1% de BSA.

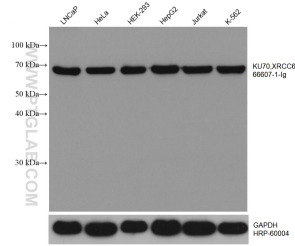
For technical support and original validation data for this product please contact:
T: 1 (888) 4PTGLAB (1-888-478-4522) (toll free in USA), or 1(312) 455-8498 (outside USA)
E: proteintech@ptglab.com
W: ptglab.com

This product is exclusively available under Proteintech Group brand and is not available to purchase from any other manufacturer.

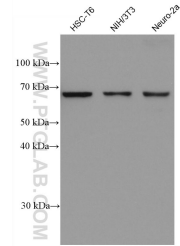
Données de validation sélectionnées



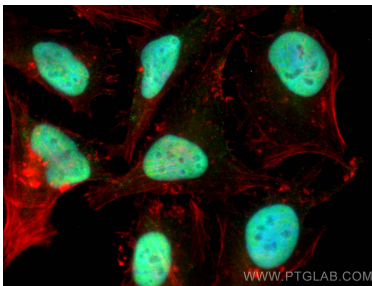
Immunofluorescent analysis of (4% PFA) fixed HepG2 cells using KU70,XRCC6 antibody (66607-1-Ig, Clone: 3C12D9) at dilution of 1:800 and CoraLite®488-Conjugated AffiniPure Goat Anti-Mouse IgG(H+L).



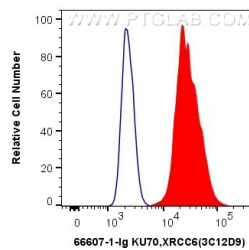
Various lysates were subjected to SDS PAGE followed by western blot with 66607-1-Ig (KU70,XRCC6 antibody) at dilution of 1:50000 incubated at room temperature for 1.5 hours. The membrane was stripped and reblotted with HRP-conjugated GAPDH Monoclonal antibody (HRP-60004) as loading control.



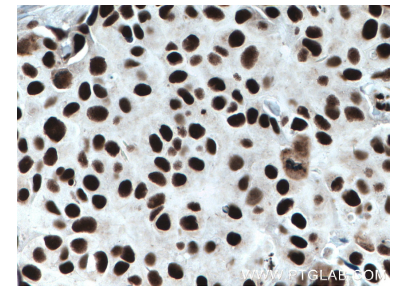
Various lysates were subjected to SDS PAGE followed by western blot with 66607-1-Ig (KU70,XRCC6 antibody) at dilution of 1:50000 incubated at room temperature for 1.5 hours.



Immunofluorescent analysis of (4% PFA) fixed HeLa cells using KU70,XRCC6 antibody (66607-1-Ig, Clone: 3C12D9) at dilution of 1:1000 and CoraLite®488-Conjugated AffiniPure Goat Anti-Mouse IgG(H+L), CL594-Phalloidin (red).



1×10^6 HepG2 cells were intracellularly stained with 0.4 ug Anti-Human KU70,XRCC6 (66607-1-Ig, Clone:3C12D9) and CoraLite®488-Conjugated AffiniPure Goat Anti-Mouse IgG(H+L) at dilution 1:1000 (red), or 0.4 ug Mouse IgG1 Isotype Control (MOPC-21) (65124-1-Ig, Clone: MOPC-21) (blue). Cells were fixed and permeabilized with Transcription Factor Staining Buffer Kit (PF00011).



Immunohistochemical analysis of paraffin-embedded human breast cancer tissue slide using 66607-1-Ig (KU70,XRCC6 antibody) at dilution of 1:4000 (under 40x lens. Heat mediated antigen retrieval with Tris-EDTA buffer (pH 9.0).