

À des fins de recherche uniquement

Anticorps Monoclonal anti-MMACHC



Numéro de catalogue: 66609-1-Ig **1 Publications**

Informations de base

Numéro de catalogue: 66609-1-Ig	Numéro d'acquisition GenBank: BC006122	Méthode de purification: Purification par protéine A
Taille: 150ul , Concentration: 900 µg/ml by Nanodrop and 907 µg/ml by Bradford method using BSA as the standard;	Identification du gène (NCBI): 25974	CloneNo.: 4G10A11
Hôte: Mouse	Nom complet: methylmalonic aciduria (cobalamin deficiency) cblC type, with homocystinuria	Dilutions recommandées: WB 1:5000-1:50000 IF 1:200-1:800
Isotype: IgG1	MW calculé 282 aa, 32 kDa	
Immunogen Catalog Number: AG15001		

Applications

Applications testées: FC, IF, WB, ELISA	Contrôles positifs:
Demandes citées: WB	WB : cellules HepG2, cellules HEK-293, cellules HeLa, cellules K-562, cellules Raji, cellules RAW 264.7
Spécificité de l'espèce: Humain, souris	IF : cellules HepG2,
Espèces citées: Humain	

Informations générales

MMACHC, also named as CblC, is located on chromosome 1 and comprises four coding exons. Human MMACHC catalyzes the reductive decyanation of cyanocobalamin and may serve as a trafficking chaperone for intracellular cobalamin. It also catalyzes the glutathione-dependent reductive demethylation of methylcobalamin, and, with much lower efficiency, the glutathione-dependent reductive demethylation of adenosylcobalamin. MMACHC binds cyanocobalamin, adenosylcobalamin, methylcobalamin and other, related vitamin B12 derivatives.

Publications notables

Autrice	Pubmed ID	Journal	Application
Lingzhi Wang	35131382	Cancer Lett	WB

Stockage

Stockage:
Stocker à -20°C. Stable pendant un an après l'expédition.
Tampon de stockage:
PBS avec azoture de sodium à 0,02 % et glycérol à 50 % pH 7,3
L'aliquotage n'est pas nécessaire pour le stockage à -20C

*** Les 20ul contiennent 0,1% de BSA.

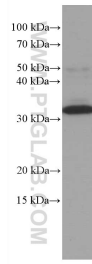
For technical support and original validation data for this product please contact:

T: 1 (888) 4PTGLAB (1-888-478-4522) (toll free in USA), or 1(312) 455-8498 (outside USA)

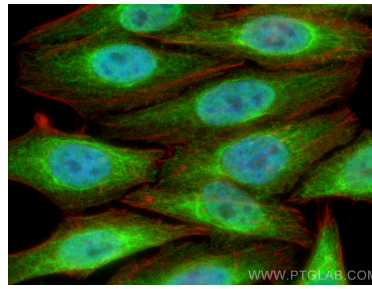
E: proteintech@ptglab.com
W: ptglab.com

This product is exclusively available under Proteintech Group brand and is not available to purchase from any other manufacturer.

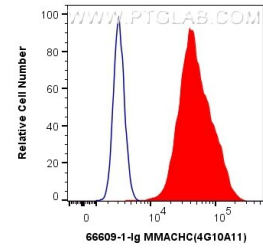
Données de validation sélectionnées



HepG2 cells were subjected to SDS PAGE followed by western blot with 66609-1-Ig (MMACHC antibody) at dilution of 1:10000 incubated at room temperature for 1.5 hours.



Immunofluorescent analysis of (4% PFA) fixed HepG2 cells using MMACHC antibody (66609-1-Ig, Clone: 4G10A11) at dilution of 1:400 and CoraLite@488-Conjugated AffiniPure Goat Anti-Mouse IgG(H+L), CL594-Phalloidin (red).



1X10⁶ HeLa cells were intracellularly stained with 0.8 ug Anti-Human MMACHC (66609-1-Ig, Clone:4G10A11) and CoraLite@488-Conjugated AffiniPure Goat Anti-Mouse IgG(H+L) at dilution 1:1000 (red), or 0.8 ug Mouse IgG1 Isotype Control (MOPC-21) (65124-1-Ig, Clone: MOPC-21) (blue). Cells were fixed and permeabilized with Transcription Factor Staining Buffer Kit (PF00011).