

À des fins de recherche uniquement

Anticorps Monoclonal anti-CCRL2

Numéro de catalogue: 66611-1-Ig **3 Publications**



Informations de base

Numéro de catalogue: 66611-1-Ig	Numéro d'acquisition GenBank: BC025717	Méthode de purification: Purification par protéine G
Taille: 150ul , Concentration: 1300 µg/ml by Nanodrop and 1000 µg/ml by Bradford method using BSA as the standard;	Identification du gène (NCBI): 9034	CloneNo.: 2C1E11
Hôte: Mouse	Nom complet: chemokine (C-C motif) receptor-like 2	Dilutions recommandées: WB 1:1000-1:6000 IHC 1:400-1:1600
Isotype: IgG1	MW calculé: 344 aa, 40 kDa	
Immunogen Catalog Number: AG4045	MW observés: 47 kDa	

Applications

Applications testées: IHC, WB, ELISA	Contrôles positifs: WB : cellules HeLa, cellules K-562 IHC : tissu splénique humain,
Demandes citées: WB	
Spécificité de l'espèce: Humain	
Espèces citées: Humain	
Remarque-IHC: il est suggéré de démasquer l'antigène avec un tampon de TE buffer pH 9,0; (*) A défaut, 'le démasquage de l'antigène peut être 'effectué avec un tampon citrate pH 6,0.	

Informations générales

Chemokine CC motif receptor-like 2 (CCRL2) is a seven-transmembrane domain receptor that shares structural and functional similarities with the family of atypical chemokine receptors (ACKRs) (PMID: 28743719). CCRL2 does not appear to be a signaling receptor, but may have a role in modulating chemokine-triggered immune responses by capturing and internalizing CCL19 or by presenting RARRES2 ligand to CMKLR1, a functional signaling receptors. CCRL2 has been found on almost all hemopoietic cells, including monocytes, macrophages, polymorphonuclear neutrophils (PMNs), T cells, dendritic cells, natural killer cells, and CD34+ progenitor cells, with PMNs expressing the highest levels (PMID: 15188357). CCRL2 is also expressed by barrier cells, such as lymphatic and blood endothelial cells and bronchial and intestinal epithelial cells (PMID: 29056935).

Publications notables

Autrice	Pubmed ID	Journal	Application
Deyu Li	31853188	Onco Targets Ther	WB
Ling Ding	31830143	PLoS Pathog	WB
Tianming Zhao	37122736	Front Immunol	WB

Stockage

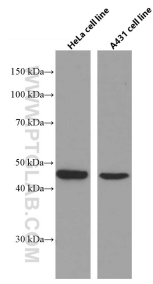
Stockage:
Stocker à -20°C. Stable pendant un an après l'expédition.
Tampon de stockage:
PBS avec azoture de sodium à 0,02 % et glycérol à 50 % pH 7,3
L'aliquotage n'est pas nécessaire pour le stockage à -20C

*** Les 20ul contiennent 0,1% de BSA.

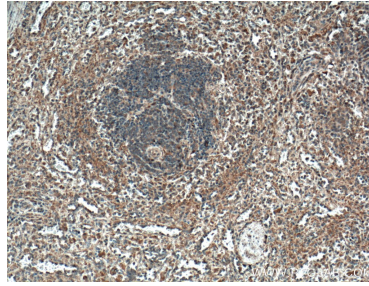
For technical support and original validation data for this product please contact:
T: 1 (888) 4PTGLAB (1-888-478-4522) (toll free in USA), or 1(312) 455-8498 (outside USA)
E: proteintech@ptglab.com
W: ptglab.com

This product is exclusively available under Proteintech Group brand and is not available to purchase from any other manufacturer.

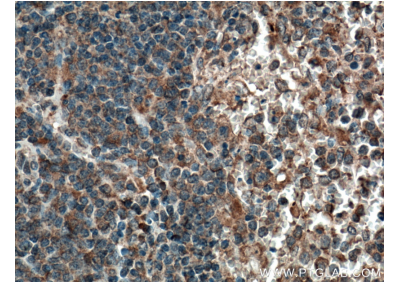
Données de validation sélectionnées



HeLa cells and A431 cells were subjected to SDS PAGE followed by western blot with 66611-1-Ig (CCRL2 antibody) at dilution of 1:3000 incubated at room temperature for 1.5 hours.



Immunohistochemical analysis of paraffin-embedded human spleen tissue slide using 66611-1-Ig (CCRL2 antibody) at dilution of 1:800 (under 10x lens. Heat mediated antigen retrieval with Tris-EDTA buffer (pH 9.0).



Immunohistochemical analysis of paraffin-embedded human spleen tissue slide using 66611-1-Ig (CCRL2 antibody) at dilution of 1:800 (under 40x lens. Heat mediated antigen retrieval with Tris-EDTA buffer (pH 9.0).