

À des fins de recherche uniquement

Anticorps Monoclonal anti-MTHFR

Numéro de catalogue: 66612-1-Ig **3 Publications**



Informations de base

Numéro de catalogue: 66612-1-Ig	Numéro d'acquisition GenBank: BC053509	Méthode de purification: Purification par protéine A
Taille: 150ul, Concentration: 1800 µg/ml by Nanodrop and 1000 µg/ml by Bradford method using BSA as the standard;	Identification du gène (NCBI): 4524	CloneNo.: 1F7A3
Hôte: Mouse	Nom complet: 5,10-méthylentetrahydrofolate reductase (NADPH)	Dilutions recommandées: WB 1:5000-1:50000 IHC 1:500-1:2000 IF 1:200-1:800
Isotype: IgG2b	MW calculé: 656 aa, 75 kDa	
Immunogen Catalog Number: AG14970	MW observés: 70 kDa	

Applications

Applications testées:

IF, IHC, WB, ELISA

Demandes citées:

WB

Spécificité de l'espèce:

Humain

Espèces citées:

Humain

Remarque-IHC: il est suggéré de démasquer l'antigène avec un tampon de TE buffer pH 9,0; (*) A défaut, 'le démasquage de l'antigène peut être effectué avec un tampon citrate pH 6,0.

Contrôles positifs:

WB : cellules LNCaP, cellules HeLa, cellules HepG2, cellules Jurkat

IHC : tissu hépatique humain,

IF : cellules HeLa,

Informations générales

5,10-Méthylentetrahydrofolate reductase (MTHFR) is a crucial enzyme in the folate metabolic pathway with a key role in generating methyl groups. MTHFR reduces 5,10-méthylentetrahydrofolate (5,10-méthylèneTHF) to 5-méthylTHF, the primary carbon donor for methionine production from homocysteine. In humans and mice studies, mutations and polymorphisms in MTHFR are associated with impaired spermatogenesis and male infertility. It has been reported that MTHFR is highly phosphorylated under unperturbed conditions and T34 is the priming phosphorylation site. MTHFR gene has two promoters and isoform (70 kDa and 77 kDa). Although the major form of MTHFR is 77kDa in most tissues, a second isoform of 70kDa was observed after western blotting of human fetal liver and porcine liver. (PMID: 24769206, PMID: 34128976, PMID: 18615588)

Publications notables

Autrice	Pubmed ID	Journal	Application
Li Cui	34533844	J Pineal Res	WB
Elodie Villa	33756106	Mol Cell	WB
Hongwei Chu	34932315	Anal Chem	WB

Stockage

Stockage:

Stocker à -20°C. Stable pendant un an après l'expédition.

Tampon de stockage:

PBS avec azoture de sodium à 0,02 % et glycérol à 50 % pH 7,3

L'aliquotage n'est pas nécessaire pour le stockage à -20C

*** Les 20ul contiennent 0,1% de BSA.

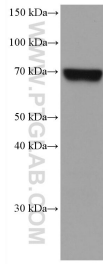
For technical support and original validation data for this product please contact:

T: 1 (888) 4PTGLAB (1-888-478-4522) (toll free in USA), or 1(312) 455-8498 (outside USA)

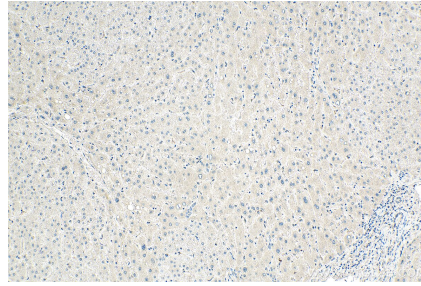
E: proteintech@ptglab.com
W: ptglab.com

This product is exclusively available under Proteintech Group brand and is not available to purchase from any other manufacturer.

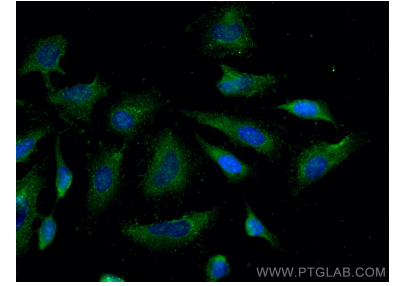
Données de validation sélectionnées



LNCaP cells were subjected to SDS PAGE followed by western blot with 66612-1-Ig (MTHFR antibody) at dilution of 1:10000 incubated at room temperature for 1.5 hours.



Immunohistochemical analysis of paraffin-embedded human liver tissue slide using 66612-1-Ig (MTHFR antibody) at dilution of 1:1000 (under 10x lens). Heat mediated antigen retrieval with Tris-EDTA buffer (pH 9.0).



Immunofluorescent analysis of (-20°C Methanol) fixed HeLa cells using MTHFR antibody (66612-1-Ig, Clone: 1F7A3) at dilution of 1:400 and CoraLite®488-Conjugated AffiniPure Goat Anti-Mouse IgG(H+L).