

À des fins de recherche uniquement

Anticorps Monoclonal anti-RIC8A

Numéro de catalogue: 66625-1-Ig



Informations de base

Numéro de catalogue: 66625-1-Ig	Numéro d'acquisition GenBank: BC011821	Méthode de purification: Purification par protéine G
Taille: 150ul, Concentration: 1400 µg/ml by Nanodrop and 1000 µg/ml by Bradford method using BSA as the standard;	Identification du gène (NCBI): 60626	CloneNo.: 1E3B11
Hôte: Mouse	Nom complet: resistance to inhibitors of cholinesterase 8 homolog A (C. elegans)	Dilutions recommandées: WB 1:2000-1:10000 IP 0.5-4.0 ug for IP and 1:1000-1:4000 for WB IHC 1:250-1:1000 IF 1:200-1:800
Isotype: IgG1	MW calculé 60 kDa	
Immunogen Catalog Number: AG1593	MW observés: 65 kDa	

Applications

Applications testées:

IF, IHC, IP, WB, ELISA

Spécificité de l'espèce:

Humain, rat, souris

Remarque-IHC: il est suggéré de démasquer l'antigène avec un tampon de TE buffer pH 9.0; (*) À défaut, le démasquage de l'antigène peut être effectué avec un tampon citrate pH 6,0.

Contrôles positifs:

WB : cellules HeLa, cellules A431, cellules HEK-293, cellules HSC-T6, cellules Jurkat, cellules NIH/3T3, cellules RAW 264.7

IP : cellules HEK-293,

IHC : tissu cérébral de souris, tissu pancréatique humain

IF : tissu cérébral de souris,

Informations générales

RIC8A, also named as synembryn-A, is a Guanine nucleotide exchange factor (GEF), which can activate some, but not all, G-alpha proteins by exchanging bound GDP for free GTP. It is involved in regulation of microtubule pulling forces during mitotic movement of chromosomes by stimulating G(i)-alpha protein, possibly leading to release G(i)-alpha-GTP and NuMA proteins from the NuMA-GPSM2-G(i)-alpha-GDP complex. RIC8A also acts as an activator for G(q)-alpha (GNAQ) protein by enhancing the G(q)-coupled receptor-mediated ERK activation.

Stockage

Stockage:

Stocker à -20°C. Stable pendant un an après l'expédition.

Tampon de stockage:

PBS avec azoture de sodium à 0,02 % et glycérol à 50 % pH 7,3

L'aliquotage n'est pas nécessaire pour le stockage à -20C

***** Les 20ul contiennent 0,1% de BSA.**

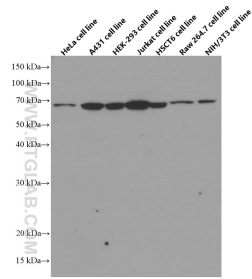
For technical support and original validation data for this product please contact:

T: 1 (888) 4PTGLAB (1-888-478-4522) (toll free
in USA), or 1(312) 455-8498 (outside USA)

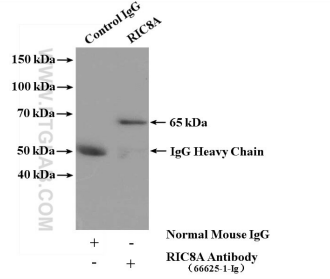
E: proteintech@ptglab.com
W: ptglab.com

This product is exclusively available under Proteintech Group brand and is not available to purchase from any other manufacturer.

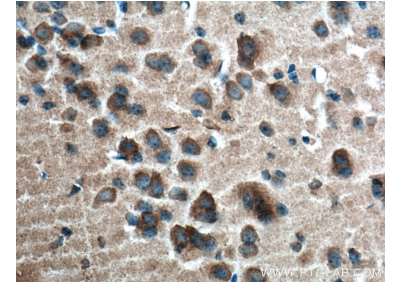
Données de validation sélectionnées



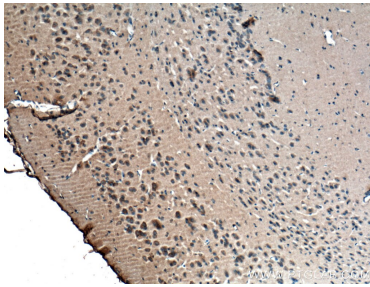
Various lysates were subjected to SDS PAGE followed by western blot with 66625-1-Ig (RIC8A antibody) at dilution of 1:5000 incubated at room temperature for 1.5 hours.



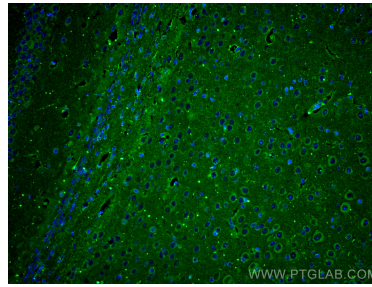
IP result of anti-RIC8A (IP:66625-1-Ig, 5ug; Detection:66625-1-Ig 1:2000) with HEK-293 cells lysate 4000 ug.



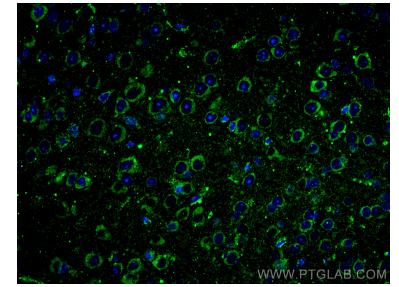
Immunohistochemical analysis of paraffin-embedded mouse brain tissue slide using 66625-1-Ig (RIC8A antibody) at dilution of 1:500 (under 10x lens. Heat mediated antigen retrieval with Tris-EDTA buffer (pH 9.0).



Immunohistochemical analysis of paraffin-embedded mouse brain tissue slide using 66625-1-Ig (RIC8A antibody) at dilution of 1:500 (under 40x lens. Heat mediated antigen retrieval with Tris-EDTA buffer (pH 9.0).



Immunofluorescent analysis of (4% PFA) fixed mouse brain tissue using RIC8A antibody (66625-1-Ig, Clone: 1E3B11) at dilution of 1:400 and CoraLite@488-Conjugated AffiniPure Goat Anti-Mouse IgG(H+L).



Immunofluorescent analysis of (4% PFA) fixed mouse brain tissue using RIC8A antibody (66625-1-Ig, Clone: 1E3B11) at dilution of 1:400 and CoraLite@488-Conjugated AffiniPure Goat Anti-Mouse IgG(H+L).