

À des fins de recherche uniquement

Anticorps Monoclonal anti-clAP1

Numéro de catalogue: 66626-1-Ig **4 Publications**



Informations de base

Numéro de catalogue: 66626-1-Ig	Numéro d'acquisition GenBank: BC016174	Méthode de purification: Purification par protéine A
Taille: 150ul , Concentration: 1600 µg/ml by 329 Nanodrop and 1000 µg/ml by Bradford method using BSA as the standard;	Identification du gène (NCBI): baculoviral IAP repeat-containing 2	CloneNo.: 1H3F1
Hôte: Mouse	Nom complet: MW calculé 618 aa, 70 kDa	Dilutions recommandées: WB 1:2000-1:10000 IHC 1:150-1:600 IF 1:50-1:500
Isotype: IgG1	MW observés: 70 kDa	
Immunogen Catalog Number: AG21398		

Applications

Applications testées:

IF, IHC, WB, ELISA

Demandes citées:

IF, IHC, IP, WB

Spécificité de l'espèce:

Humain, porc, rat, souris

Espèces citées:

Humain, souris

Remarque-IHC: il est suggéré de démasquer l'antigène avec un tampon de TE buffer pH 9,0; (*) A défaut, 'le démasquage de l'antigène peut être effectué avec un tampon citrate pH 6,0.

Contrôles positifs:

WB : cellules A431, cellules HEK-293, cellules HeLa, cellules HepG2, cellules HSCT6, cellules Jurkat, tissu cérébral de porc, tissu cérébral de rat

IHC : tissu splénique humain, tissu d'amygdalite humaine, tissu de cancer du poumon humain, tissu de lymphome humain

IF : cellules HepG2,

Informations générales

BIRC2 (also known as clAP1) is a member of the inhibitor of apoptosis protein (IAP) family. The inhibitor of apoptosis (IAP) proteins are a family of anti-apoptotic regulators found in viruses and metazoans. BIRC2 is a nuclear shuttling protein, whose subcellular localization is mediated by the CRM1-dependent nuclear export pathway (PMID: 15265700). The protein is regulated transcriptionally and can be inhibited by mitochondrial proteins released in the cytoplasm upon apoptotic stimuli (PMID: 15187025). BIRC2 is also believed to be a critical regulator of vascular integrity and endothelial cell survival, thereby providing an additional target pathway for the control of angiogenesis and blood vessel homeostasis during embryogenesis, regeneration and tumorigenesis (PMID: 17934460).

Publications notables

Autrice	Pubmed ID	Journal	Application
Jingwen Tan	36208777	Chem Biol Interact	WB
Xu Yang	36471347	J Exp Clin Cancer Res	WB,IHC,IF,IP
Jingru Huangfu	33837174	Cell Death Dis	WB

Stockage

Stockage:

Stocker à -20°C. Stable pendant un an après l'expédition.

Tampon de stockage:

PBS avec azoture de sodium à 0,02 % et glycérol à 50 % pH 7,3

L'aliquotage n'est pas nécessaire pour le stockage à -20C

***** Les 20ul contiennent 0,1% de BSA.**

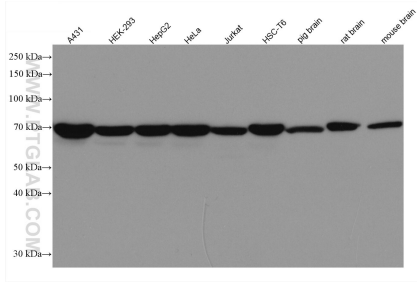
For technical support and original validation data for this product please contact:

T: 1 (888) 4PTGLAB (1-888-478-4522) (toll free in USA), or 1(312) 455-8498 (outside USA)

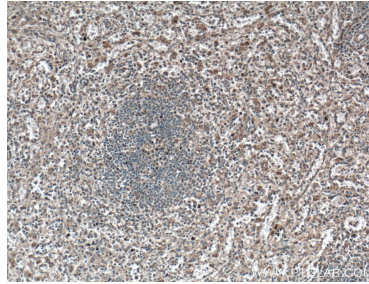
E: proteintech@ptglab.com
W: ptglab.com

This product is exclusively available under Proteintech Group brand and is not available to purchase from any other manufacturer.

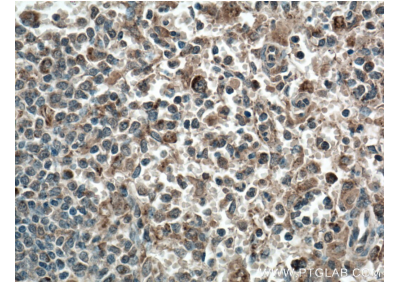
Données de validation sélectionnées



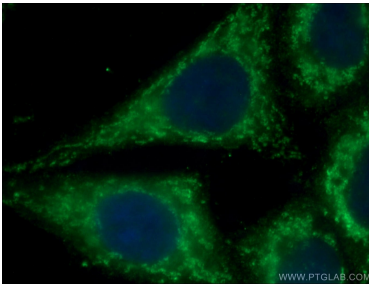
Various lysates were subjected to SDS PAGE followed by western blot with 66626-1-Ig (clAP1 antibody) at dilution of 1:6000 incubated at room temperature for 1.5 hours.



Immunohistochemical analysis of paraffin-embedded human spleen tissue slide using 66626-1-Ig (clAP1 antibody) at dilution of 1:300 (under 10x lens. Heat mediated antigen retrieval with Tris-EDTA buffer (pH 9.0).



Immunohistochemical analysis of paraffin-embedded human spleen tissue slide using 66626-1-Ig (clAP1 antibody) at dilution of 1:300 (under 40x lens. Heat mediated antigen retrieval with Tris-EDTA buffer (pH 9.0).



Immunofluorescent analysis of (4% PFA) fixed HepG2 cells using 66626-1-Ig (clAP1 antibody) at dilution of 1:50 and Alexa Fluor 488-conjugated AffiniPure Goat Anti-Mouse IgG(H+L).