

À des fins de recherche uniquement

Anticorps Monoclonal anti-C5

Numéro de catalogue: 66634-1-Ig **2 Publications**



Informations de base

Numéro de catalogue: 66634-1-Ig	Numéro d'acquisition GenBank: BC113740	Méthode de purification: Purification par protéine A
Taille: 150ul , Concentration: 1400 µg/ml by Nanodrop and 933 µg/ml by Bradford method using BSA as the standard;	Identification du gène (NCBI): 727	CloneNo.: 2G8C9
Hôte: Mouse	Nom complet: complement component 5	Dilutions recommandées: WB 1:5000-1:50000 IF 1:200-1:800
Isotype: IgG2a	MW calculé 1676 aa, 188 kDa	
Immunogen Catalog Number: AG17882	MW observés: 115 kDa	

Applications

Applications testées: FC, IF, WB, ELISA	Contrôles positifs: WB : tissu plasmatique humain, IF : cellules HepG2,
Demandes citées: WB	
Spécificité de l'espèce: Humain	
Espèces citées: Humain	

Informations générales

Publications notables

Autrice	Pubmed ID	Journal	Application
Anne Kathrin Wessig	35296708	Sci Rep	WB
Sipeng Li	34265469	Mol Cell Proteomics	WB

Stockage

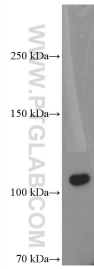
Stockage:
Stocker à -20°C. Stable pendant un an après l'expédition.
Tampon de stockage:
PBS avec azoture de sodium à 0,02 % et glycérol à 50 % pH 7,3
L'aliquotage n'est pas nécessaire pour le stockage à -20C

*** Les 20ul contiennent 0,1% de BSA.

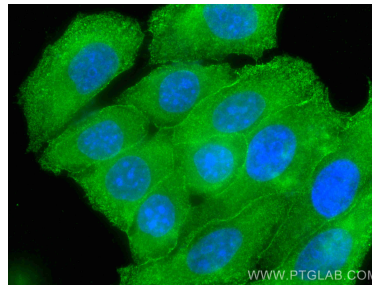
For technical support and original validation data for this product please contact:
T: 1 (888) 4PTGLAB (1-888-478-4522) (toll free in USA), or 1(312) 455-8498 (outside USA)
E: proteintech@ptglab.com
W: ptglab.com

This product is exclusively available under Proteintech Group brand and is not available to purchase from any other manufacturer.

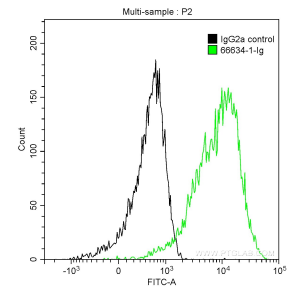
Données de validation sélectionnées



human plasma were subjected to SDS PAGE followed by western blot with 66634-1-Ig (C5 antibody) at dilution of 1:10000 incubated at room temperature for 1.5 hours.



Immunofluorescent analysis of (-20°C Methanol) fixed HepG2 cells using C5 antibody (66634-1-Ig, Clone: 2G8C9) at dilution of 1:400 and CoraLite®488-Conjugated AffiniPure Goat Anti-Mouse IgG(H+L).



1X10⁶ HepG2 cells were intracellularly stained with 0.2 ug Anti-Human C5 (66634-1-Ig, Clone: 2G8C9) and CoraLite®488-Conjugated AffiniPure Goat Anti-Mouse IgG(H+L) at dilution 1:1000 (green), or stained with 0.2 ug Mouse IgG2a Isotype Control (66360-2-Ig, Clone: K11A1B2A2) and CoraLite®488-Conjugated AffiniPure Goat Anti-Mouse IgG(H+L) at dilution 1:1000 (black). Cells were fixed with 4% PFA and permeabilized with 0.1% TritonX-100.