

À des fins de recherche uniquement

# Anticorps Monoclonal anti-FIS1

Numéro de catalogue: 66635-1-Ig **11 Publications**



## Informations de base

<b>Numéro de catalogue:</b> 66635-1-Ig	<b>Numéro d'acquisition GenBank:</b> BC009428	<b>Méthode de purification:</b> Purification par protéine G
<b>Taille:</b> 150ul , Concentration: 1200 µg/ml by Nanodrop and 1000 µg/ml by Bradford method using BSA as the standard;	<b>Identification du gène (NCBI):</b> 51024	<b>CloneNo.:</b> 2F10E1
<b>Hôte:</b> Mouse	<b>Nom complet:</b> fission 1 (mitochondrial outer membrane) homolog (S. cerevisiae)	<b>Dilutions recommandées:</b> WB 1:2000-1:10000 IHC 1:250-1:1000 IF 1:50-1:500
<b>Isotype:</b> IgG1	<b>MW calculé:</b> 17 kDa	
<b>Immunogen Catalog Number:</b> AG1409	<b>MW observés:</b> 15 kDa	

## Applications

### Applications testées:

IF, IHC, WB, ELISA

### Demandes citées:

IF, IHC, WB

### Spécificité de l'espèce:

Humain

### Espèces citées:

Humain, rat, souris, fish

**Remarque-IHC: il est suggéré de démasquer l'antigène avec un tampon de TE buffer pH 9,0; (\*) A défaut, 'le démasquage de l'antigène peut être 'effectué avec un tampon citrate pH 6,0.**

### Contrôles positifs:

**WB :** cellules HEK-293, cellules HeLa, cellules HepG2, cellules Jurkat, cellules K-562, cellules LNCaP, cellules MCF-7

**IHC :** tissu de cancer du sein humain, tissu de cancer de la prostate humaine, tissu de tumeur ovarienne humaine

**IF :** cellules HepG2,

## Informations générales

Fis1 (fission 1) is an integral mitochondrial outer membrane protein that participates in mitochondrial fission by interacting with dynamin-related protein 1 (Drp1). Excessive mitochondrial fission is associated with the pathology of a number of neurodegenerative or neurodevelopmental diseases. Increased expression of Fis1 has been found in Huntington's disease (HD)-affected brain, Alzheimer's disease (AD) patients, and autism spectrum disorder. (21257639, 21459773, 23333625)

## Publications notables

Autrice	Pubmed ID	Journal	Application
YUE LI	34470980	Biol Pharm Bull	IF
Xiao-Lin Jiang	36309912	Aging (Albany NY)	WB
Yujie Zhong	36501024	Nutrients	WB

## Stockage

### Stockage:

Stocker à -20°C. Stable pendant un an après l'expédition.

### Tampon de stockage:

PBS avec azoture de sodium à 0,02 % et glycérol à 50 % pH 7,3

L'aliquotage n'est pas nécessaire pour le stockage à -20C

**\*\*\* Les 20ul contiennent 0,1% de BSA.**

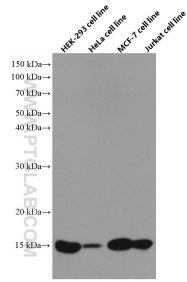
For technical support and original validation data for this product please contact:

T: 1 (888) 4PTGLAB (1-888-478-4522) (toll free in USA), or 1(312) 455-8498 (outside USA)

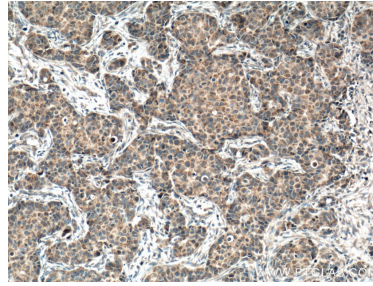
E: [proteintech@ptglab.com](mailto:proteintech@ptglab.com)  
W: [ptglab.com](http://ptglab.com)

**This product is exclusively available under Proteintech Group brand and is not available to purchase from any other manufacturer.**

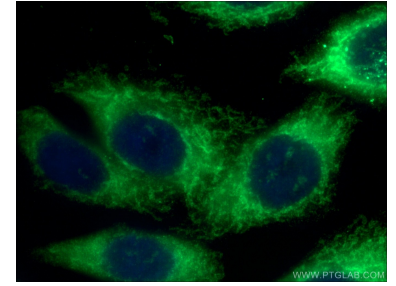
## Données de validation sélectionnées



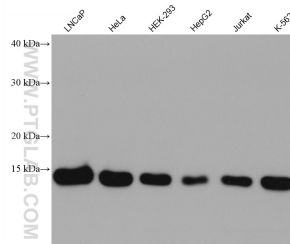
Various cells were subjected to SDS PAGE followed by western blot with 66635-1-Ig (FIS1 antibody) at dilution of 1:5000 incubated at room temperature for 1.5 hours.



Immunohistochemical analysis of paraffin-embedded human breast cancer tissue slide using 66635-1-Ig (FIS1 antibody) at dilution of 1:500 (under 10x lens. Heat mediated antigen retrieval with Tris-EDTA buffer (pH 9.0)).



Immunofluorescent analysis of (4% PFA) fixed HepG2 cells using 66635-1-Ig (FIS1 antibody) at dilution of 1:100 and Alexa Fluor 488-Conjugated AffiniPure Goat Anti-Rabbit IgG(H+L).



Various lysates were subjected to SDS PAGE followed by western blot with 66635-1-Ig (FIS1 antibody) at dilution of 1:10000 incubated at room temperature for 1.5 hours.