

À des fins de recherche uniquement

Anticorps Monoclonal anti-XRCC2

Numéro de catalogue: 66652-1-Ig



Informations de base

Numéro de catalogue: 66652-1-Ig	Numéro d'acquisition GenBank: BC042137	Méthode de purification: Purification par protéine A
Taille: 150ul, Concentration: 2000 µg/ml by Nanodrop and 1000 µg/ml by Bradford method using BSA as the standard;	Identification du gène (NCBI): 7516	CloneNo.: 3D9A1
Hôte: Mouse	Nom complet: X-ray repair complementing defective repair in Chinese hamster cells 2	Dilutions recommandées: WB 1:1000-1:4000 IF 1:50-1:500
Isotype: IgG2b	MW calculé 280 aa, 32 kDa	
Immunogen Catalog Number: AG14421	MW observés: 32 kDa	

Applications

Applications testées: FC, IF, WB, ELISA	Contrôles positifs:
Spécificité de l'espèce: Humain, souris	WB : cellules HEK-293, cellules NIH/3T3, cellules Raji IF : cellules HepG2,

Informations générales

XRCC2, also named as DNA repair protein XRCC2, is a 280 amino acid protein, which belongs to the RecA family. XRCC2 is involved in the homologous recombination repair (HRR) pathway of double-stranded DNA, thought to repair chromosomal fragmentation, translocations and deletions. XRCC2 is a part of the Rad21 paralog protein complex BCDX2 which acts in the BRCA1-BRCA2-dependent HR pathway.

Stockage

Stockage:
Stocker à -20°C. Stable pendant un an après l'expédition.
Tampon de stockage:
PBS avec azoture de sodium à 0,02 % et glycérol à 50 % pH 7,3
L'aliquotage n'est pas nécessaire pour le stockage à -20C

*** Les 20ul contiennent 0,1% de BSA.

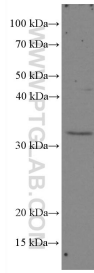
For technical support and original validation data for this product please contact:

T: 1 (888) 4PTGLAB (1-888-478-4522) (toll free
in USA), or 1(312) 455-8498 (outside USA)

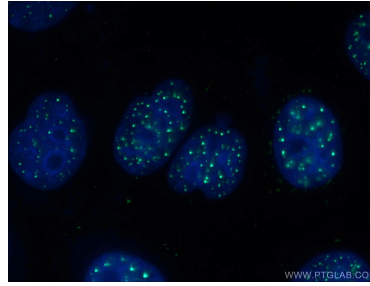
E: proteintech@ptglab.com
W: ptglab.com

This product is exclusively available under Proteintech Group brand and is not available to purchase from any other manufacturer.

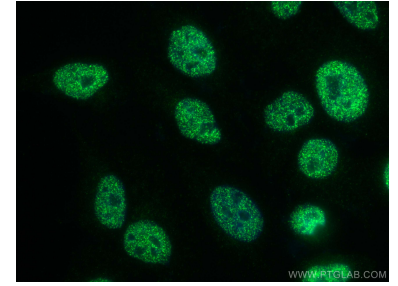
Données de validation sélectionnées



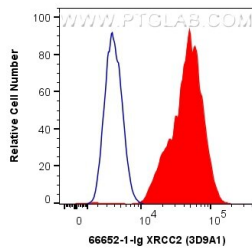
HEK-293 cells were subjected to SDS PAGE followed by western blot with 66652-1-Ig (XRCC2 antibody) at dilution of 1:2000 incubated at room temperature for 1.5 hours.



Immunofluorescent analysis of (-20°C Ethanol) fixed HepG2 cells using 66652-1-Ig (XRCC2 antibody) at dilution of 1:100 and Alexa Fluor 488-Conjugated AffiniPure Goat Anti-Mouse IgG(H+L).



Immunofluorescent analysis of (4% PFA) fixed HepG2 cells using XRCC2 antibody (66652-1-Ig, Clone: 3D9A1) at dilution of 1:400 and CoraLite®488-Conjugated AffiniPure Goat Anti-Mouse IgG(H+L).



1X10⁶ HepG2 cells were intracellularly stained with 0.4 ug Anti-Human XRCC2 (66652-1-Ig, Clone:3D9A1) and CoraLite®488-Conjugated AffiniPure Goat Anti-Mouse IgG(H+L) at dilution 1:1000 (red), or 0.4 ug Mouse IgG2b Isotype Control (MPC-11) (65128-1-Ig, Clone: MPC-11) (blue). Cells were fixed and permeabilized with Transcription Factor Staining Buffer Kit (PF00011).