

À des fins de recherche uniquement

# Anticorps Monoclonal anti-GOLGA2/GM130



Numéro de catalogue: 66662-1-Ig

Phare

6 Publications

## Informations de base

<b>Numéro de catalogue:</b> 66662-1-Ig	<b>Numéro d'acquisition GenBank:</b> BC014188	<b>Méthode de purification:</b> Purification par protéine G
<b>Taille:</b> 150ul , Concentration: 1000 µg/ml by Bradford method using BSA as the standard;	<b>Identification du gène (NCBI):</b> 2801	<b>CloneNo.:</b> 2A4F11
<b>Hôte:</b> Mouse	<b>Nom complet:</b> golgi autoantigen, golgin subfamily a, 2	<b>Dilutions recommandées:</b> WB 1:5000-1:50000 IF 1:500-1:2000
<b>Isotype:</b> IgG1	<b>MW calculé:</b> 111 kDa	
<b>Immunogen Catalog Number:</b> AG1848	<b>MW observés:</b> 130 kDa	

## Applications

### Applications testées:

IF, WB, ELISA

### Demandes citées:

WB

### Spécificité de l'espèce:

Humain, rat

### Espèces citées:

Humain, rat

### Contrôles positifs:

WB : cellules LNCaP, cellules HEK-293, cellules HeLa, cellules HepG2, cellules HSC-T6, cellules Jurkat, cellules K-562, cellules PC-12

IF : cellules HeLa,

## Informations générales

GOLGA2, also known as GM130, is a 130 kDa cis-Golgi matrix protein which is one component of the detergent and salt resistant Golgi matrix. It is a peripheral membrane protein highly bound to Golgi membrane and localized mainly at the cytoplasmic face of cis-Golgi membrane. Together with its interacting partner proteins, including p115, giantin, GRASP65, and Rab GTPase, GOLGA2/GM130 is involved in the regulation of ER-to-Golgi transport and also in the maintenance of the Golgi structure. Emerging evidence suggest that the GOLGA2/GM130 has potential roles in the control of glycosylation, cell cycle progression, and higher order cell functions such as cell polarization and directed cell migration. (PMID: 20197635)

## Publications notables

Autrice	Pubmed ID	Journal	Application
Xiaoliang Tan	36136987	Anticancer Drugs	WB
Nan Zhou	35174212	Front Mol Biosci	WB
Han Zeng	34974159	Mol Metab	WB

## Stockage

### Stockage:

Stocker à -20°C. Stable pendant un an après l'expédition.

### Tampon de stockage:

PBS avec azoture de sodium à 0,02 % et glycérol à 50 % pH 7,3

L'aliquotage n'est pas nécessaire pour le stockage à -20C

\*\*\* Les 20ul contiennent 0,1% de BSA.

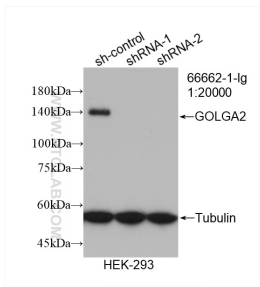
For technical support and original validation data for this product please contact:

T: 1 (888) 4PTGLAB (1-888-478-4522) (toll free in USA), or 1(312) 455-8498 (outside USA)

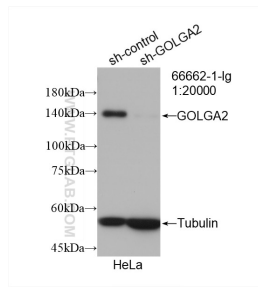
E: proteintech@ptglab.com  
W: ptglab.com

This product is exclusively available under Proteintech Group brand and is not available to purchase from any other manufacturer.

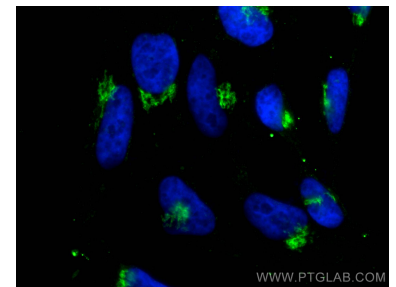
## Données de validation sélectionnées



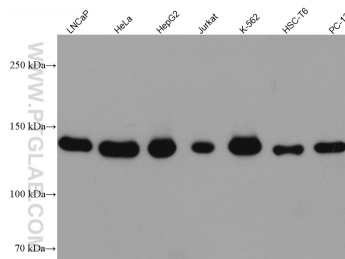
WB result of GOLGA2/GM130 antibody (66662-1-Ig; 1:20000; incubated at room temperature for 1.5 hours) with sh-Control and sh-GOLGA2/GM130 transfected HEK-293 cells.



WB result of GOLGA2/GM130 antibody (66662-1-Ig; 1:20000; incubated at room temperature for 1.5 hours) with sh-Control and sh-GOLGA2/GM130 transfected HeLa cells.



Immunofluorescent analysis of (4% PFA) fixed HeLa cells using GOLGA2/GM130 antibody (66662-1-Ig, Clone: 2A4F11) at dilution of 1:1000 and CoraLite®488-Conjugated AffiniPure Goat Anti-Mouse IgG(H+L).



Various lysates were subjected to SDS PAGE followed by western blot with 66662-1-Ig (GOLGA2/GM130 antibody) at dilution of 1:10000 incubated at room temperature for 1.5 hours.