

À des fins de recherche uniquement

# Anticorps Monoclonal anti-PDIA6

Numéro de catalogue: 66669-1-Ig **1 Publications**



## Informations de base

Numéro de catalogue: 66669-1-Ig	Numéro d'acquisition GenBank: BC001312	Méthode de purification: Purification par protéine A
Taille: 150ul , Concentration: 1200 µg/ml by Nanodrop and 1000 µg/ml by Bradford method using BSA as the standard;	Identification du gène (NCBI): 10130	CloneNo.: 1G2D4
Hôte: Mouse	Nom complet: protein disulfide isomerase family A, member 6	Dilutions recommandées: WB 1:5000-1:50000 IHC 1:150-1:600 IF 1:50-1:500
Isotype: IgG1	MW calculé 48 kDa, 54 kDa	
Immunogen Catalog Number: AG27608	MW observés: 54 kDa	

## Applications

### Applications testées:

IF, IHC, WB, ELISA

### Demandes citées:

WB

### Spécificité de l'espèce:

Humain, rat, souris

### Espèces citées:

poisson-zèbre

**Remarque-IHC: il est suggéré de démasquer l'antigène avec un tampon de TE buffer pH 9,0; (\*) A défaut, 'le démasquage de l'antigène peut être 'effectué avec un tampon citrate pH 6,0.**

### Contrôles positifs:

WB : cellules LNCaP, cellules 4T1, cellules HEK-293, cellules HeLa, cellules HepG2, cellules HSC-T6, cellules Jurkat, cellules K-562, cellules NIH/3T3

IHC : tissu de cancer du foie humain, tissu rénal humain

IF : cellules HepG2,

## Informations générales

PDIA6 (Protein disulfide-isomerase A6) is also named as ERP5, P5, TXNDC7 and belongs to the protein disulfide isomerase family. It is one of the endoplasmic reticulum (ER) resident proteins that catalyze formation, reduction, and isomerization of disulfide bonds in proteins and are thought to play a role in folding of disulfide-bonded proteins (PMID:7590364). It has 2 isoforms produced by alternative splicing. This antibody is specific to PDIA6.

## Publications notables

Autrice	Pubmed ID	Journal	Application
Yongkang Zhang	30273864	Environ Pollut	WB

## Stockage

### Stockage:

Stocker à -20°C. Stable pendant un an après l'expédition.

### Tampon de stockage:

PBS avec azoture de sodium à 0,02 % et glycérol à 50 % pH 7,3

L'aliquotage n'est pas nécessaire pour le stockage à -20C

\*\*\* Les 20ul contiennent 0,1% de BSA.

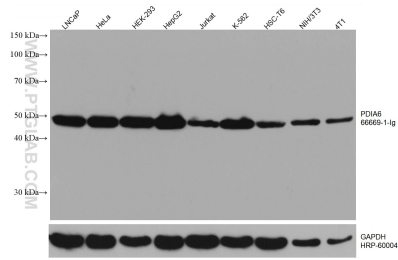
For technical support and original validation data for this product please contact:

T: 1 (888) 4PTGLAB (1-888-478-4522) (toll free in USA), or 1(312) 455-8498 (outside USA)

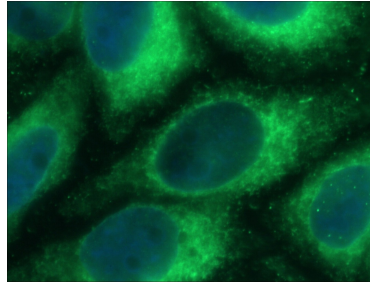
E: proteintech@ptglab.com  
W: ptglab.com

This product is exclusively available under Proteintech Group brand and is not available to purchase from any other manufacturer.

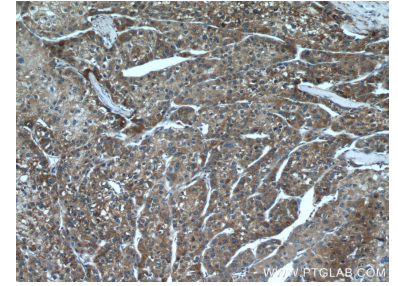
## Données de validation sélectionnées



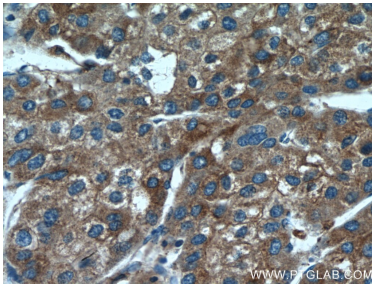
Various lysates were subjected to SDS PAGE followed by western blot with 66669-1-Ig (PDIA6 antibody) at dilution of 1:20000 incubated at room temperature for 1.5 hours. The membrane was stripped and reblotted with HRP-conjugated GAPDH Monoclonal antibody (HRP-60004) as loading control.



Immunofluorescent analysis of (-20°C Ethanol) fixed HepG2 cells using 66669-1-Ig (PDIA6 antibody) at dilution of 1:100 and Alexa Fluor 488-conjugated AffiniPure Goat Anti-Mouse IgG(H+L).



Immunohistochemical analysis of paraffin-embedded human liver cancer tissue slide using 66669-1-Ig (PDIA6 antibody) at dilution of 1:300 (under 10x lens).



Immunohistochemical analysis of paraffin-embedded human liver cancer tissue slide using 66669-1-Ig (PDIA6 antibody) at dilution of 1:300 (under 40x lens).



Immunofluorescent analysis of (-20°C Methanol) fixed HepG2 cells using PDIA6 antibody (66669-1-Ig, Clone: 1G2D4) at dilution of 1:400 and CoraLite®488-Conjugated AffiniPure Goat Anti-Mouse IgG(H+L).