

À des fins de recherche uniquement

# Anticorps Monoclonal anti-ASF/SF2

Numéro de catalogue: 66671-1-Ig



## Informations de base

Numéro de catalogue: 66671-1-Ig	Numéro d'acquisition GenBank: BC010264	Méthode de purification: Purification par protéine G
Taille: 150ul, Concentration: 1000 µg/ml by Bradford method using BSA as the standard;	Identification du gène (NCBI): 6426	CloneNo.: 1A6C5
Hôte: Mouse	Nom complet: splicing factor, arginine/serine-rich 1	Dilutions recommandées: WB 1:5000-1:50000 IP 0.5-4.0 ug for IP and 1:2000-1:10000 for WB
Isotype: IgG1	MW calculé: 248 aa, 28 kDa	IHC 1:200-1:800 IF 1:200-1:800
Immunogen Catalog Number: AG3626	MW observés: 32 kDa, 28 kDa, 22 kDa	

## Applications

### Applications testées:

IF, IHC, IP, WB, ELISA

### Spécificité de l'espèce:

Humain, rat, souris

**Remarque-IHC: il est suggéré de démasquer l'antigène avec un tampon de TE buffer pH 9.0; (\*) À défaut, le démasquage de l'antigène peut être effectué avec un tampon citrate pH 6,0.**

### Contrôles positifs:

WB : cellules HeLa, cellules HEK-293, cellules HepG2, cellules HSC-T6, cellules Jurkat, cellules LNCaP, cellules NIH/3T3, cellules PC-12, cellules RAW 264.7

IP : cellules HeLa,

IHC : tissu de tumeur ovarienne humain, tissu de gliome humain

IF : cellules HepG2,

## Informations générales

SFRS1, also named as ASF, SF2, SF2P33, SFRS1 and ASF-1, belongs to the splicing factor SR family. It plays a role in preventing exon skipping, ensuring the accuracy of splicing and regulating alternative splicing. SFRS1 interacts with other spliceosomal components, via the RS domains, to form a bridge between the 5'- and 3'-splice site binding components, U1 snRNP and U2AF. Isoform ASF-2 and isoform ASF-3 act as splicing repressors. This antibody can recognize all the 3 isoforms(28kd,33kd and 22kd) of SFRS1.

## Stockage

### Stockage:

Stocker à -20°C. Stable pendant un an après l'expédition.

### Tampon de stockage:

PBS avec azoture de sodium à 0,02 % et glycérol à 50 % pH 7,3

L'aliquotage n'est pas nécessaire pour le stockage à -20C

\*\*\* Les 20ul contiennent 0,1% de BSA.

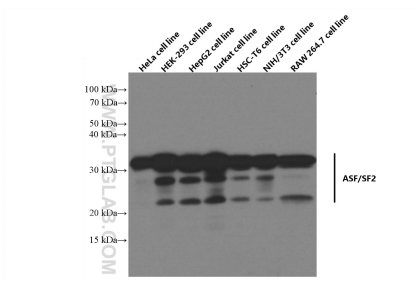
For technical support and original validation data for this product please contact:

T: 1 (888) 4PTGLAB (1-888-478-4522) (toll free in USA), or 1(312) 455-8498 (outside USA)

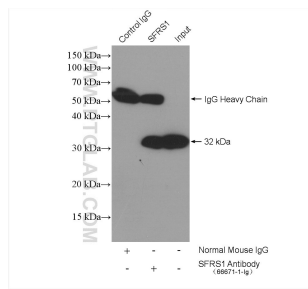
E: [proteintech@ptglab.com](mailto:proteintech@ptglab.com)  
W: [ptglab.com](http://ptglab.com)

This product is exclusively available under Proteintech Group brand and is not available to purchase from any other manufacturer.

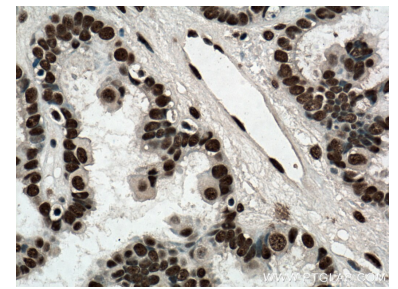
## Données de validation sélectionnées



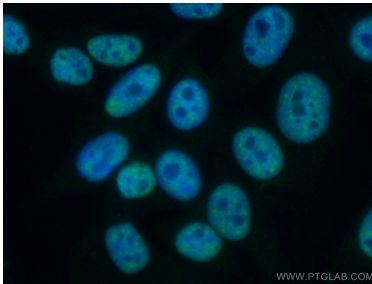
Various lysates were subjected to SDS PAGE followed by western blot with 66671-1-Ig (ASF/SF2 antibody) at dilution of 1:20000 incubated at room temperature for 1.5 hours.



IP result of anti-ASF/SF2 (IP:66671-1-Ig, 5ug; Detection:66671-1-Ig 1:5000) with HeLa cells lysate 2200 ug.



Immunohistochemical analysis of paraffin-embedded human ovary tumor tissue slide using 66671-1-Ig (ASF/SF2 antibody) at dilution of 1:400 (under 40x lens. Heat mediated antigen retrieval with Tris-EDTA buffer (pH 9.0).



Immunofluorescent analysis of (4% PFA) fixed HepG2 cells using ASF/SF2 antibody (66671-1-Ig, Clone: 1A6C5) at dilution of 1:400 and CoraLite®488-Conjugated AffiniPure Goat Anti-Mouse IgG(H+L).