

À des fins de recherche uniquement

Anticorps Monoclonal anti-MLKL

Numéro de catalogue: 66675-1-Ig

Phare

58 Publications



Informations de base

| | | |
|--|--|---|
| Numéro de catalogue: 66675-1-Ig | Numéro d'acquisition GenBank: BC028141 | Méthode de purification: Purification par protéine G |
| Taille: 150ul , Concentration: 2000 µg/ml by Nanodrop; | Identification du gène (NCBI): 197259 | CloneNo.: 3D4C6 |
| Hôte: Mouse | Nom complet: mixed lineage kinase domain-like | Dilutions recommandées: WB 1:5000-1:50000 IHC 1:500-1:2000 IF 1:50-1:500 |
| Isotype: IgG1 | MW calculé 471 aa, 54 kDa | |
| Immunogen Catalog Number: AG15188 | MW observés: 35-40kDa, 50-55 kDa | |

Applications

Applications testées:

IF, IHC, WB, ELISA

Demandes citées:

IF, IHC, IP, WB

Spécificité de l'espèce:

Humain, souris

Espèces citées:

Humain, rat, souris

Contrôles positifs:

WB : cellules HT-29, cellules 4T1, cellules HeLa, cellules HepG2, cellules NIH/3T3, cellules PC-3

IHC : tissu de cancer du foie humain, tissu de cancer du côlon humain

IF : tissu de cancer du foie humain,

Remarque-IHC: il est suggéré de démasquer l'antigène avec un tampon de TE buffer pH 9,0; (*) À défaut, le démasquage de l'antigène peut être effectué avec un tampon citrate pH 6,0.

Informations générales

Mixed lineage kinase domain like pseudokinase (MLKL), belongs to the protein kinase superfamily, has two MW of 54 and 30 kDa. MLKL plays a critical role in tumor necrosis factor (TNF)-induced necroptosis, a programmed cell death process, via interaction with receptor-interacting protein 3 (RIP3), which is a key signaling molecule in necroptosis pathway. High levels of this protein and RIP3 are associated with inflammatory bowel disease in children. 66675-1-Ig antibody recognizes 54 kDa MLKL monomer, 216 kDa MLKL tetramer and a band around 45-50 kDa which are similar to papers published. (PMID: 31848291). MLKL can be detected a 35kDa truncated isoform (PMID: 35965541).

Publications notables

| Autrice | Pubmed ID | Journal | Application |
|----------------|-----------|-------------------|-------------|
| Ying Tu | 36155221 | Environ Pollut | WB,IF |
| Xiao-Ling Zhou | 33041798 | Front Pharmacol | WB |
| Lu Yuan | 32918989 | Food Chem Toxicol | WB |

Stockage

Stockage:

Stocker à -20°C. Stable pendant un an après l'expédition.

Tampon de stockage:

PBS avec azoture de sodium à 0,02 % et glycérol à 50 % pH 7,3

L'aliquotage n'est pas nécessaire pour le stockage à -20C

*** Les 20ul contiennent 0,1% de BSA.

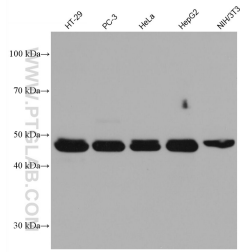
For technical support and original validation data for this product please contact:

T: 1 (888) 4PTGLAB (1-888-478-4522) (toll free in USA), or 1(312) 455-8498 (outside USA)

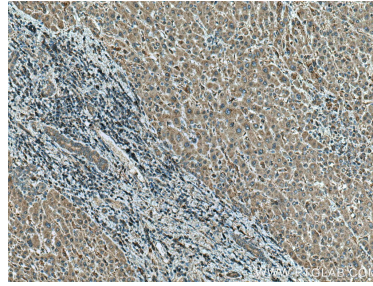
E: proteintech@ptglab.com
W: ptglab.com

This product is exclusively available under Proteintech Group brand and is not available to purchase from any other manufacturer.

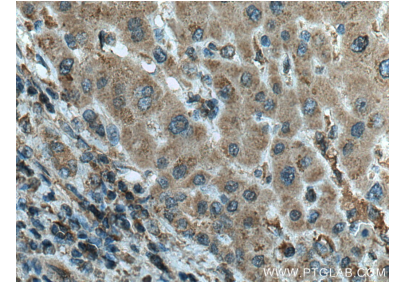
Données de validation sélectionnées



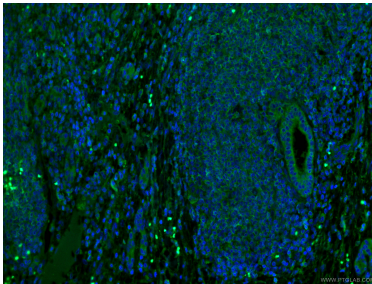
Various lysates were subjected to SDS PAGE followed by western blot with 66675-1-Ig (MLKL antibody) at dilution of 1:10000 incubated at room temperature for 1.5 hours.



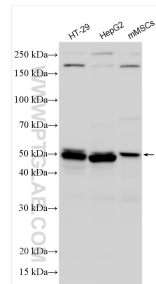
Immunohistochemical analysis of paraffin-embedded human liver cancer tissue slide using 66675-1-Ig (MLKL antibody) at dilution of 1:1000 (under 10x lens). Heat mediated antigen retrieval with Tris-EDTA buffer (pH 9.0).



Immunohistochemical analysis of paraffin-embedded human liver cancer tissue slide using 66675-1-Ig (MLKL antibody) at dilution of 1:1000 (under 40x lens). Heat mediated antigen retrieval with Tris-EDTA buffer (pH 9.0).



Immunofluorescent analysis of (4% PFA) fixed human liver cancer tissue using 66675-1-Ig (MLKL antibody) at dilution of 1:100 and CoraLite488-Conjugated AffiniPure Goat Anti-Mouse IgG(H+L).



Various lysates were subjected to SDS PAGE followed by western blot with 66675-1-Ig (MLKL antibody) at dilution of 1:8000 incubated at room temperature for 1.5 hours.