

À des fins de recherche uniquement

Anticorps Monoclonal anti-PSMA/GCPII



Numéro de catalogue: 66678-1-Ig **1 Publications**

Informations de base

Numéro de catalogue: 66678-1-Ig	Numéro d'acquisition GenBank: BC025672	Méthode de purification: Purification par protéine A
Taille: 150ul , Concentration: 1000 µg/ml by Bradford method using BSA as the standard;	Identification du gène (NCBI): 2346	CloneNo.: 3G4E12
Hôte: Mouse	Nom complet: folate hydrolase (prostate-specific membrane antigen) 1	Dilutions recommandées: WB 1:4000-1:10000 IHC 1:1000-1:4000 IF 1:200-1:800
Isotype: IgG1	MW calculé 719 aa, 81 kDa	
Immunogen Catalog Number: AG16594	MW observés: 100-120 kDa	

Applications

Applications testées:

IF, IHC, WB, ELISA

Demandes citées:

WB

Spécificité de l'espèce:

Humain, rat

Espèces citées:

Humain

Remarque-IHC: il est suggéré de démasquer l'antigène avec un tampon de TE buffer pH 9,0; (*) A défaut, 'le démasquage de l'antigène peut être 'effectué avec un tampon citrate pH 6,0.

Contrôles positifs:

WB : cellules LNCaP, tissu rénal de rat

IHC : tissu de cancer de la prostate humain,

IF : tissu de cancer de la prostate humain,

Informations générales

PSMA(Prostate-specific membrane antigen) is also named as FOLH1, FOLH, NAALAD1, PSM and belongs to the peptidase M28 family. PSMA is a 100-120 kDa integral transmembrane glycoprotein, considered to be a highly specific marker of the prostate gland, and has successfully been used as a marker of circulating prostatic epithelial cells(PMID:10074909; 15680901). It is involved in conversion of the major neurotransmitter (NAAG) to NAA and free glutamate. It has 8 isoforms produced by alternative splicing.

Publications notables

Autrice	Pubmed ID	Journal	Application
Liyuan Yin	31988304	Sci Rep	WB

Stockage

Stockage:

Stocker à -20°C. Stable pendant un an après l'expédition.

Tampon de stockage:

PBS avec azoture de sodium à 0,02 % et glycérol à 50 % pH 7,3

L'aliquotage n'est pas nécessaire pour le stockage à -20C

*** Les 20ul contiennent 0,1% de BSA.

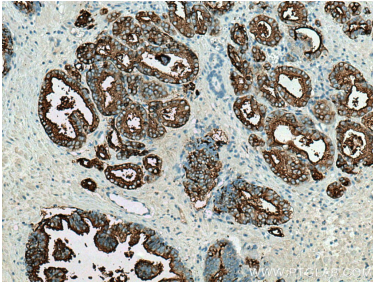
For technical support and original validation data for this product please contact:

T: 1 (888) 4PTGLAB (1-888-478-4522) (toll free
in USA), or 1(312) 455-8498 (outside USA)

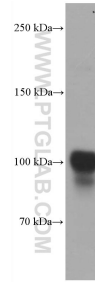
E: proteintech@ptglab.com
W: ptglab.com

This product is exclusively available under Proteintech Group brand and is not available to purchase from any other manufacturer.

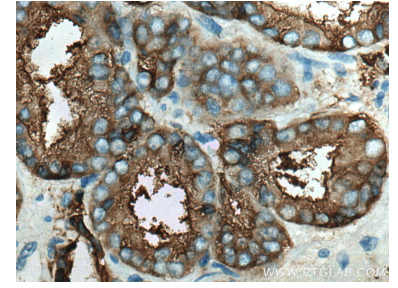
Données de validation sélectionnées



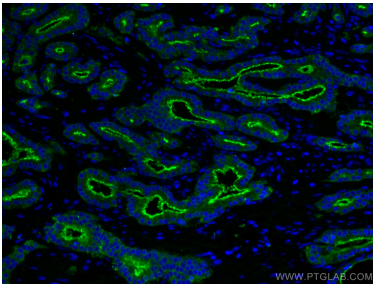
Immunohistochemical analysis of paraffin-embedded human prostate cancer tissue slide using 66678-1-Ig (PSMA/GCPII antibody) at dilution of 1:2000 (under 10x lens). Heat mediated antigen retrieval with Tris-EDTA buffer (pH 9.0).



LNCaP cells were subjected to SDS PAGE followed by western blot with 66678-1-Ig (FOLH1 antibody) at dilution of 1:8000 incubated at room temperature for 1.5 hours.



Immunohistochemical analysis of paraffin-embedded human prostate cancer tissue slide using 66678-1-Ig (PSMA/GCPII antibody) at dilution of 1:2000 (under 40x lens). Heat mediated antigen retrieval with Tris-EDTA buffer (pH 9.0).



Immunofluorescent analysis of (4% PFA) fixed human prostate cancer tissue using PSMA/GCPII antibody (66678-1-Ig, Clone: 3G4E12) at dilution of 1:400 and CoraLite®488-Conjugated AffiniPure Goat Anti-Mouse IgG(H+L).