

À des fins de recherche uniquement

Anticorps Monoclonal anti-ERC1

Numéro de catalogue: 66681-1-Ig **1 Publications**



Informations de base

Numéro de catalogue: 66681-1-Ig	Numéro d'acquisition GenBank: BC132782	Méthode de purification: Purification par protéine G
Taille: 150ul, Concentration: 1200 µg/ml by Nanodrop and 1000 µg/ml by Bradford method using BSA as the standard;	Identification du gène (NCBI): 23085	CloneNo.: 2A5B9
Hôte: Mouse	Nom complet: ELKS/RAB6-interacting/CAST family member 1	Dilutions recommandées: WB 1:5000-1:50000
Isotype: IgG1	MW calculé: 1116 aa, 128 kDa	
Immunogen Catalog Number: AG17665	MW observés: 135 kDa	

Applications

Applications testées:

WB, ELISA

Demandes citées:

WB

Spécificité de l'espèce:

Humain, rat, souris

Espèces citées:

canin

Contrôles positifs:

WB : cellules HeLa, cellules HEK-293, cellules HepG2, cellules Jurkat, cellules NIH/3T3, HSC-T6

Informations générales

ERC is an acronym based on previous separate namings of members of this protein family, ELKS, Rab6IP2 and CAST (PMID: 12391317). They are known to bind RIMs, the active zone proteins that regulate neurotransmitter release. ERC1 (ELKS) is an essential regulatory subunit of the IKK complex and likely functions by recruiting IκBα to the complex (PMID: 15218148). Multiple isoforms of ERC1 mRNA are generated by alternative splicing (PMID: 12203787). There are two known splice variants of ERC1 protein that differ at their C termini, ERC1a and ERC1b. ERC1a is ubiquitously expressed, whereas ERC1b is brain-specific (PMID: 12391317; 12923177).

Publications notables

Autrice	Pubmed ID	Journal	Application
Yuta Homma	34023780	Biochem Biophys Res Commun	WB

Stockage

Stockage:

Stocker à -20°C. Stable pendant un an après l'expédition.

Tampon de stockage:

PBS avec azoture de sodium à 0,02 % et glycérol à 50 % pH 7,3

L'aliquotage n'est pas nécessaire pour le stockage à -20°C

*** Les 20ul contiennent 0,1% de BSA.

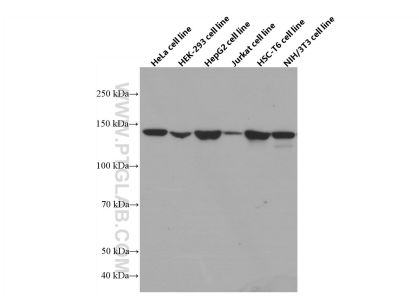
For technical support and original validation data for this product please contact:

T: 1 (888) 4PTGLAB (1-888-478-4522) (toll free in USA), or 1(312) 455-8498 (outside USA)

E: proteintech@ptglab.com
W: ptglab.com

This product is exclusively available under Proteintech Group brand and is not available to purchase from any other manufacturer.

Données de validation sélectionnées



Various lysates were subjected to SDS PAGE followed by western blot with 66681-1-Ig (ERC1 antibody) at dilution of 1:10000 incubated at room temperature for 1.5 hours.