

À des fins de recherche uniquement

Anticorps Monoclonal anti-Cytokeratin 6A



Numéro de catalogue: 66685-1-Ig **2 Publications**

Informations de base

Numéro de catalogue: 66685-1-Ig	Numéro d'acquisition GenBank: BC008807	Méthode de purification: Purification par protéine G
Taille: 150ul , Concentration: 1100 µg/ml by Nanodrop and 1000 µg/ml by Bradford method using BSA as the standard;	Identification du gène (NCBI): 3853	CloneNo.: 2H6A11
Hôte: Mouse	Nom complet: keratin 6A	Dilutions recommandées: WB 1:20000-1:100000 IHC 1:1000-1:2000
Isotype: IgG1	MW calculé: 60 kDa	
Immunogen Catalog Number: AG0882	MW observés: 60 kDa	

Applications

Applications testées: IHC, WB, ELISA	Contrôles positifs: WB : cellules A431, IHC : tissu de cancer du col de l'utérus humain,
Demandes citées: IF, IHC	
Spécificité de l'espèce: Humain	
Espèces citées: Humain, souris	

Remarque-IHC: il est suggéré de démasquer l'antigène avec un tampon de TE buffer pH 9,0; (*) A défaut, 'le démasquage de l'antigène peut être 'effectué avec un tampon citrate pH 6,0.

Informations générales

Keratins are a large family of proteins that form the intermediate filament cytoskeleton of epithelial cells, which are classified into two major sequence types. Type I keratins are a group of acidic intermediate filament proteins, including K9-K23, and the hair keratins Ha1-Ha8. Type II keratins are the basic or neutral counterparts to the acidic type I keratins, including K1-K8, and the hair keratins, Hb1-Hb6. Keratin 6 is a type II keratin. It is used as marker for epidermal hyperproliferation and differentiation. There are three keratin 6 isoforms: keratin 6A, 6B and 6C. They share more than 99% identical DNA sequence.

Publications notables

Autrice	Pubmed ID	Journal	Application
Junfeng Zhang	33221741	Aging (Albany NY)	IF, IHC
Zhenkun Zhang	33159581	Cell Tissue Res	IF

Stockage

Stockage:
Stocker à -20°C. Stable pendant un an après l'expédition.
Tampon de stockage:
PBS avec azote de sodium à 0,02 % et glycérol à 50 % pH 7,3
L'aliquotage n'est pas nécessaire pour le stockage à -20C

*** Les 20ul contiennent 0,1% de BSA.

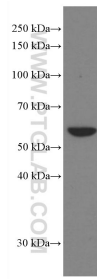
For technical support and original validation data for this product please contact:

T: 1 (888) 4PTGLAB (1-888-478-4522) (toll free in USA), or 1(312) 455-8498 (outside USA)

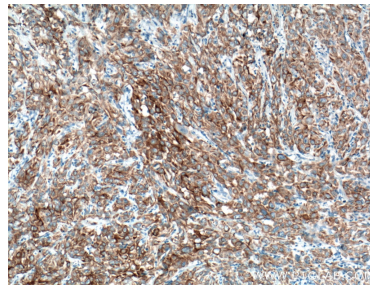
E: proteintech@ptglab.com
W: ptglab.com

This product is exclusively available under Proteintech Group brand and is not available to purchase from any other manufacturer.

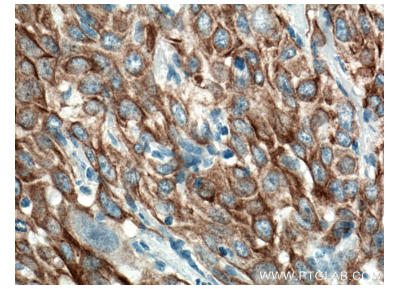
Données de validation sélectionnées



A431 cells were subjected to SDS PAGE followed by western blot with 66685-1-Ig (KRT6A antibody) at dilution of 1:100000 incubated at room temperature for 1.5 hours.



Immunohistochemical analysis of paraffin-embedded human cervical cancer tissue slide using 66685-1-Ig (KRT6A antibody) at dilution of 1:2000 (under 10x lens. Heat mediated antigen retrieval with Tris-EDTA buffer (pH 9.0).



Immunohistochemical analysis of paraffin-embedded human cervical cancer tissue slide using 66685-1-Ig (KRT6A antibody) at dilution of 1:2000 (under 40x lens. Heat mediated antigen retrieval with Tris-EDTA buffer (pH 9.0).