

À des fins de recherche uniquement

# Anticorps Monoclonal anti-CALD1

Numéro de catalogue: 66693-1-Ig

Phare

1 Publications



## Informations de base

Numéro de catalogue: 66693-1-Ig	Numéro d'acquisition GenBank: BC040354	Méthode de purification: Purification par protéine A
Taille: 150ul, Concentration: 1381 µg/ml by 800 Nanodrop and 1000 µg/ml by Bradford method using BSA as the standard;	Identification du gène (NCBI): Nom complet: caldesmon 1	CloneNo.: 1E1C11
Hôte: Mouse	MW calculé 538 aa, 63 kDa	Dilutions recommandées: WB 1:2000-1:10000 IHC 1:2000-1:8000 IF 1:200-1:800
Isotype: IgG2b	MW observés: 70 kDa-75 kDa	
Immunogen Catalog Number: AG13676		

## Applications

Applications testées:  
FC, IF, IHC, WB, ELISA

Demandes citées:  
IF

Spécificité de l'espèce:  
Humain, rat, souris

Espèces citées:  
Humain

**Remarque-IHC: il est suggéré de démasquer l'antigène avec un tampon de TE buffer pH 9,0; (\*) À défaut, le démasquage de l'antigène peut être effectué avec un tampon citrate pH 6,0.**

Contrôles positifs:

WB : cellules NCI-H1299, cellules 4T1, cellules A2780, cellules HeLa, cellules HepG2, cellules HSC-T6, cellules NIH/3T3, cellules PC-3, cellules SKOV-3

IHC : tissu de cancer du côlon humain, tissu de côlon de souris, tissu d'hystéromyome humain

IF : cellules HeLa, cellules HepG2

## Informations générales

### Publications notables

Autrice	Pubmed ID	Journal	Application
Yuzo Yoshida	35806129	Int J Mol Sci	IF

## Stockage

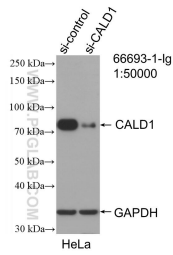
Stockage:  
Stocker à -20°C. Stable pendant un an après l'expédition.  
Tampon de stockage:  
PBS avec azoture de sodium à 0,02 % et glycérol à 50 % pH 7,3  
L'aliquotage n'est pas nécessaire pour le stockage à -20C

\*\*\* Les 20ul contiennent 0,1% de BSA.

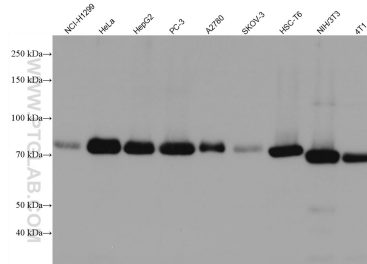
For technical support and original validation data for this product please contact:  
T: 1 (888) 4PTGLAB (1-888-478-4522) (toll free in USA), or 1(312) 455-8498 (outside USA)  
E: proteintech@ptglab.com  
W: ptglab.com

This product is exclusively available under Proteintech Group brand and is not available to purchase from any other manufacturer.

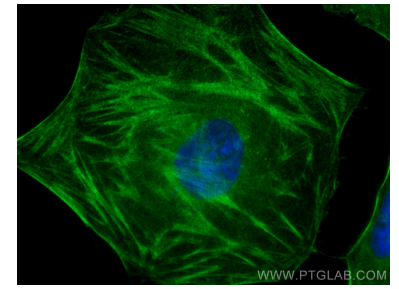
## Données de validation sélectionnées



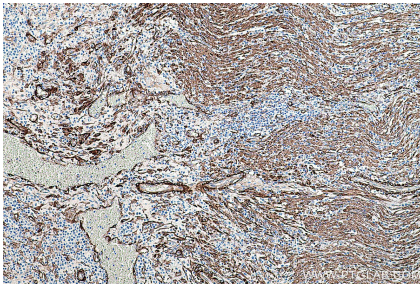
WB result of CALD1 antibody (66693-1-Ig; 1:50000); incubated at room temperature for 1.5 hours) with sh-Control and sh-CALD1 transfected HeLa cells.



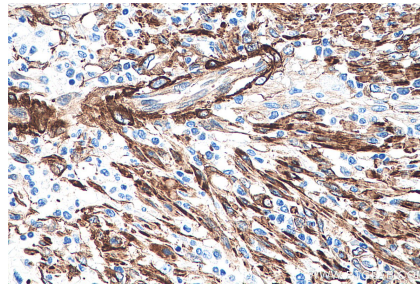
Various lysates were subjected to SDS PAGE followed by western blot with 66693-1-Ig (CALD1 antibody) at dilution of 1:10000 incubated at room temperature for 1.5 hours.



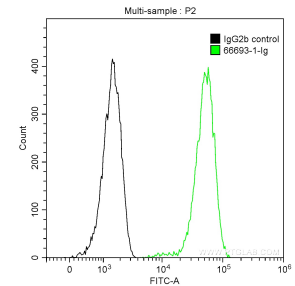
Immunofluorescent analysis of (4% PFA) fixed HeLa cells using CALD1 antibody (66693-1-Ig, Clone: 1E1C11) at dilution of 1:400 and CoraLite@488-Conjugated AffiniPure Goat Anti-Mouse IgG(H+L).



Immunohistochemical analysis of paraffin-embedded human colon cancer tissue slide using 66693-1-Ig (CALD1 antibody) at dilution of 1:4000 (under 10x lens). Heat mediated antigen retrieval with Tris-EDTA buffer (pH 9.0).



Immunohistochemical analysis of paraffin-embedded human colon cancer tissue slide using 66693-1-Ig (CALD1 antibody) at dilution of 1:4000 (under 40x lens). Heat mediated antigen retrieval with Tris-EDTA buffer (pH 9.0).



$1 \times 10^6$  HepG2 cells were intracellularly stained with 0.2 ug Anti-Human CALD1 (66693-1-Ig, Clone:1E1C11) and CoraLite@488-Conjugated AffiniPure Goat Anti-Mouse IgG(H+L) at dilution 1:1000 (green), and 0.2 ug Control Antibody. Cells were fixed with 90% MeOH.