

À des fins de recherche uniquement

Anticorps Monoclonal anti-ACE2

Numéro de catalogue: 66699-1-Ig

Phare

27 Publications



Informations de base

Numéro de catalogue: 66699-1-Ig	Numéro d'acquisition GenBank: BC048094	Méthode de purification: Purification par protéine A
Taille: 150ul, Concentration: 1856 µg/ml by Nanodrop and 1000 µg/ml by Bradford method using BSA as the standard;	Identification du gène (NCBI): 59272	CloneNo.: 2F12A4
Hôte: Mouse	Nom complet: angiotensin I converting enzyme (peptidyl-dipeptidase A) 2	Dilutions recommandées: WB 1:2000-1:6000 IHC 1:1000-1:4000 IF 1:200-1:800
Isotype: IgG1	MW calculé: 805 aa, 92 kDa	
Immunogen Catalog Number: AG15554	MW observés: 120 kDa, 92 kDa	

Applications

Applications testées:

IF, IHC, WB, ELISA

Demandes citées:

FC, IF, IHC, WB

Spécificité de l'espèce:

Humain

Espèces citées:

Humain, souris

Remarque-IHC: il est suggéré de démasquer l'antigène avec un tampon de TE buffer pH 9,0; (*) A défaut, 'le démasquage de l'antigène peut être effectué avec un tampon citrate pH 6,0.

Contrôles positifs:

WB : tissu testiculaire humain, tissu de muscle squelettique humain

IHC : tissu d'intestin grêle humain, tissu de côlon humain, tissu rénal humain, tissu testiculaire humain

IF : tissu rénal humain, tissu rénal de souris

Informations générales

ACE2 (Angiotensin-converting enzyme 2), also named as ACEH, is a zinc metalloprotease of the ACE family and a critical regulator of the reninangiotensin system. ACE2 has a more restricted tissue distribution than ACE, being found predominantly in the heart, kidneys, and testes although low levels have been detected in a variety of tissues (PMID:15983030). ACE2 has been shown to be a functional receptor of the human coronaviruses SARS-CoV and SARS-CoV-2 (PMID: 32142651). The expression level and expression pattern of human ACE2 in different tissues might be critical for the susceptibility, symptoms, and outcome of 2019-nCoV/SARS-CoV-2 infection (PMID: 32133153). It can be used as a potential therapeutic target of SARS-CoV-2 (PMID: 32125455). The calculated molecular weight of ACE2 is 92kDa but it migrates to 120kDa due to N-glycosylation (PMID:16166094). Sometimes, several cleaved fragments can also be detected as 75kDa, 50 kDa or 37kDa (PMID: 29561187, 22009550, 30759273). It has 2 isoforms produced by alternative splicing. This antibody is specific to ACE2. The location of ACE2 is membrane and cytoplasm, however it accumulates in the nucleus during the mitosis (PMID: 1730413/PMID: 18292088).

Publications notables

Autrice	Pubmed ID	Journal	Application
Shunhua Long	36178477	Viral Immunol	IF
Shengjie Li	32991984	Ocul Surf	IHC
Ni Huang	33140061	medRxiv	WB, IF, FC

Stockage

Stockage:

Stocker à -20°C. Stable pendant un an après l'expédition.

Tampon de stockage:

PBS avec azoture de sodium à 0,02 % et glycérol à 50 % pH 7,3

L'aliquotage n'est pas nécessaire pour le stockage à -20C

*** Les 20ul contiennent 0,1% de BSA.

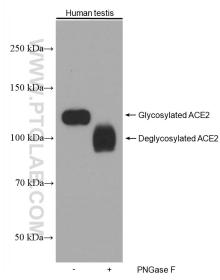
For technical support and original validation data for this product please contact:

T: 1 (888) 4PTGLAB (1-888-478-4522) (toll free in USA), or 1(312) 455-8498 (outside USA)

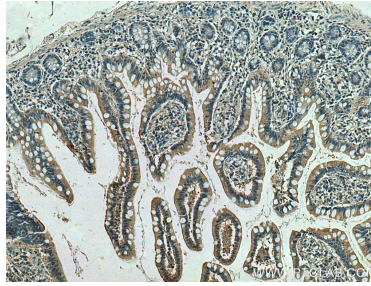
E: proteintech@ptglab.com
W: ptglab.com

This product is exclusively available under Proteintech Group brand and is not available to purchase from any other manufacturer.

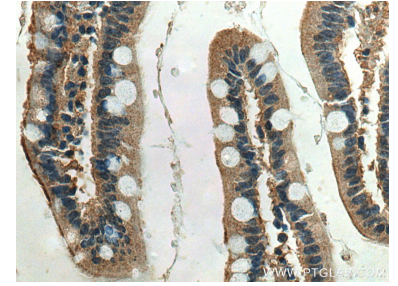
Données de validation sélectionnées



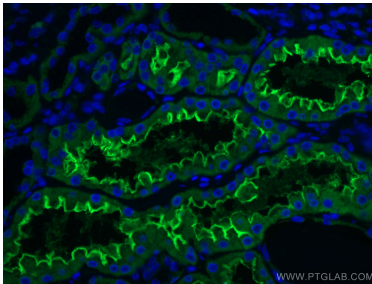
Untreated and PNGase F-treated lysates of human testis tissue were subjected to SDS PAGE followed by western blot with 66699-1-Ig (ACE2 antibody) at dilution of 1:3000 incubated at room temperature for 1.5 hours. PNGase F was obtained from Atagenix (cat.NO. ata808).



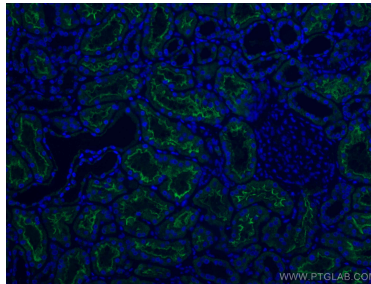
Immunohistochemical analysis of paraffin-embedded human small intestine tissue slide using 66699-1-Ig (ACE2 antibody) at dilution of 1:2000 (under 10x lens)..



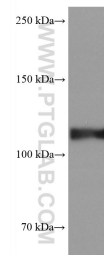
Immunohistochemical analysis of paraffin-embedded human small intestine tissue slide using 66699-1-Ig (ACE2 antibody) at dilution of 1:2000 (under 40x lens)..



Immunofluorescent analysis of (4% PFA) fixed human kidney tissue using ACE2 antibody (66699-1-Ig, Clone: 2F12A4) at dilution of 1:400 and CoraLite®488-Conjugated AffiniPure Goat Anti-Mouse IgG(H+L).



Immunofluorescent analysis of (4% PFA) fixed human kidney tissue using ACE2 antibody (66699-1-Ig, Clone: 2F12A4) at dilution of 1:400 and CoraLite®488-Conjugated AffiniPure Goat Anti-Mouse IgG(H+L).



human testis tissue were subjected to SDS PAGE followed by western blot with 66699-1-Ig (ACE2 antibody) at dilution of 1:5000 incubated at room temperature for 1.5 hours.