

À des fins de recherche uniquement

Anticorps Monoclonal anti-CD21

Numéro de catalogue: 66701-1-Ig



Informations de base

Numéro de catalogue: 66701-1-Ig	Numéro d'acquisition GenBank: BC136394	Méthode de purification: Purification par protéine A
Taille: 150ul, Concentration: 1500 µg/ml by Nanodrop and 1000 µg/ml by Bradford method using BSA as the standard;	Identification du gène (NCBI): 1380	CloneNo.: 1D9A3
Hôte: Mouse	Nom complet: complement component (3d/Epstein Barr virus) receptor 2	Dilutions recommandées: WB 1:2000-1:10000
Isotype: IgG2a	MW calculé: 1092 aa, 119 kDa	
Immunogen Catalog Number: AG18058	MW observés: 150 kDa	

Applications

Applications testées: WB, ELISA	Contrôles positifs: WB : tissu splénique humain,
Spécificité de l'espèce: Humain	

Informations générales

CD21, also known as complement receptor type 2 (CR2), complement C3d receptor, and Epstein-Barr virus receptor, is a transmembrane protein that contains a small cytoplasmic domain, a transmembrane region and an extracellular domain consisting of 15 tandem short consensus repeat sequences (PMID: 6230668; 2551147). It is expressed on B cells, follicular dendritic cells, thymocytes and a subset of peripheral T cells (PMID: 26119182). CD21 binds complement fragments C3d, C3dg and iC3b and acts as a receptor for the Epstein-Barr virus (PMID: 7753047). On B cells, together with CD19 and CD81, CD21 forms a complex that functions as a co-receptor to the BCR (PMID: 7542009). It is involved in B cells activation and functions.

Stockage

Stockage:
Stocker à -20°C. Stable pendant un an après l'expédition.
Tampon de stockage:
PBS avec azoture de sodium à 0,02 % et glycérol à 50 % pH 7,3
L'aliquotage n'est pas nécessaire pour le stockage à -20C

***** Les 20ul contiennent 0,1% de BSA.**

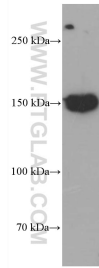
For technical support and original validation data for this product please contact:

T: 1 (888) 4PTGLAB (1-888-478-4522) (toll free in USA), or 1(312) 455-8498 (outside USA)

E: proteintech@ptglab.com
W: ptglab.com

This product is exclusively available under Proteintech Group brand and is not available to purchase from any other manufacturer.

Données de validation sélectionnées



human spleen tissue were subjected to SDS PAGE followed by western blot with 66701-1-Ig (CD21 antibody) at dilution of 1:5000 incubated at room temperature for 1.5 hours.