

À des fins de recherche uniquement

Anticorps Monoclonal anti-TPT1

Numéro de catalogue: 66713-1-Ig Phare



Informations de base

Numéro de catalogue: 66713-1-Ig	Numéro d'acquisition GenBank: BC003352	Méthode de purification: Purification par protéine G
Taille: 150ul, Concentration: 1400 µg/ml by Nanodrop and 1000 µg/ml by Bradford method using BSA as the standard;	Identification du gène (NCBI): 7178	CloneNo.: 1G6A10
Hôte: Mouse	Nom complet: tumor protein, translationally- controlled 1	Dilutions recommandées: WB 1:5000-1:50000 IHC 1:500-1:2000 IF 1:50-1:500
Isotype: IgG1	MW calculé: 22 kDa	
Immunogen Catalog Number: AG27651	MW observés: 22 kDa	

Applications

Applications testées:

IF, IHC, WB, ELISA

Spécificité de l'espèce:

Humain, rat, souris

Remarque-IHC: il est suggéré de démasquer l'antigène avec un tampon de TE buffer pH 9.0; (*) À défaut, le démasquage de l'antigène peut être effectué avec un tampon citrate pH 6,0.

Contrôles positifs:

WB : cellules Jurkat, cellules HeLa, cellules HSC-T6, cellules MCF-7, cellules NIH/3T3, cellules RAW 264.7

IHC : tissu de cancer du côlon humain,

IF : cellules HEK-293,

Informations générales

The translationally controlled tumor protein (TPT1, also known as TCTP) is a highly conserved, abundantly expressed protein associated with cell growth and apoptosis regulation. It is overexpressed in most tumor cells and its down-regulation decreases the viability of those cells. This antibody detected 22 kDa TPT1 in lysates.

Stockage

Stockage:

Stocker à -20°C. Stable pendant un an après l'expédition.

Tampon de stockage:

PBS avec azoture de sodium à 0,02 % et glycérol à 50 % pH 7,3

L'aliquotage n'est pas nécessaire pour le stockage à -20C

*** Les 20ul contiennent 0,1% de BSA.

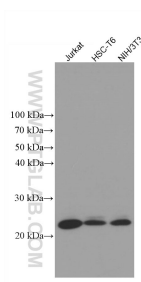
For technical support and original validation data for this product please contact:

T: 1 (888) 4PTGLAB (1-888-478-4522) (toll free in USA), or 1(312) 455-8498 (outside USA)

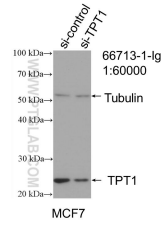
E: proteintech@ptglab.com
W: ptglab.com

This product is exclusively available under Proteintech Group brand and is not available to purchase from any other manufacturer.

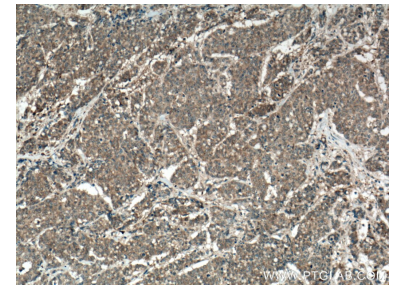
Données de validation sélectionnées



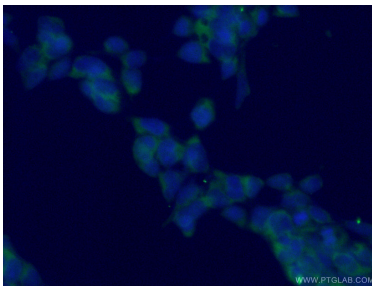
Various lysates were subjected to SDS PAGE followed by western blot with 66713-1-Ig (TPT1 antibody) at dilution of 1:10000 incubated at room temperature for 1.5 hours.



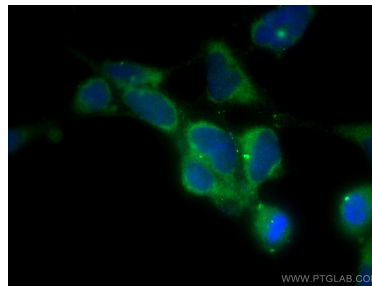
WB result of TPT1 antibody (66713-1-Ig; 1:60000; incubated at room temperature for 1.5 hours) with sh-Control and sh-TPT1 transfected MCF-7 cells.



Immunohistochemical analysis of paraffin-embedded human colon cancer tissue slide using 66713-1-Ig (TPT1 antibody) at dilution of 1:1000 (under 10x lens. Heat mediated antigen retrieval with Tris-EDTA buffer (pH 9.0).



Immunofluorescent analysis of (-20°C Ethanol) fixed HEK-293 cells using 66713-1-Ig (TPT1 antibody) at dilution of 1:100 and Alexa Fluor 488-Conjugated AffiniPure Goat Anti-Mouse IgG(H+L).



Immunofluorescent analysis of (-20°C Methanol) fixed HEK-293 cells using TPT1 antibody (66713-1-Ig, Clone: 1G6A10) at dilution of 1:400 and CoraLite® 488-Conjugated AffiniPure Goat Anti-Mouse IgG(H+L).