

À des fins de recherche uniquement

Anticorps Monoclonal anti-RHEB

Numéro de catalogue: 66714-1-Ig



Informations de base

Numéro de catalogue: 66714-1-Ig	Numéro d'acquisition GenBank: BC016155	Méthode de purification: Purification par protéine G
Taille: 150ul, Concentration: 1500 µg/ml by Nanodrop and 1000 µg/ml by Bradford method using BSA as the standard;	Identification du gène (NCBI): 6009	CloneNo.: 2F9H8
Hôte: Mouse	Nom complet: Ras homolog enriched in brain	Dilutions recommandées: WB 1:1000-1:3000 IF 1:50-1:500
Isotype: IgG1	MW calculé 184 aa, 20 kDa	
Immunogen Catalog Number: AG8887	MW observés: 18 kDa	

Applications

Applications testées:
IF, WB, ELISA

Spécificité de l'espèce:
Humain, souris

Contrôles positifs:

WB : tissu cérébral humain fœtal, cellules DU 145, cellules HeLa, tissu cérébral de souris

IF : tissu de cancer du pancréas humain, tissu pancréatique de souris

Informations générales

Rheb is a member of the Ras superfamily small GTPases that plays important roles in the regulation of protein synthesis and growth in response to nutrient and growth factors. It is well known to bind and activate mTOR, a serine/threonine kinase which augments protein synthesis. Rheb has GTPase activity and shuttles between a GDP-bound form and a GTP-bound form, and farnesylation of the protein is required for this activity.

Stockage

Stockage:
Stocker à -20°C. Stable pendant un an après l'expédition.

Tampon de stockage:
PBS avec azoture de sodium à 0,02 % et glycérol à 50 % pH 7,3
L'aliquotage n'est pas nécessaire pour le stockage à -20C

*** Les 20ul contiennent 0,1% de BSA.

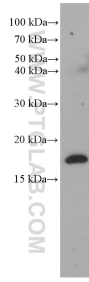
For technical support and original validation data for this product please contact:

T: 1 (888) 4PTGLAB (1-888-478-4522) (toll free
in USA), or 1(312) 455-8498 (outside USA)

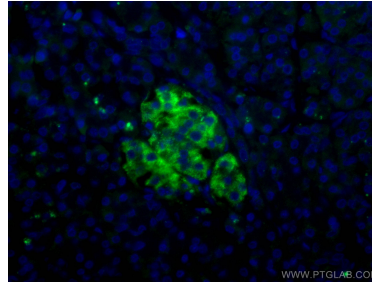
E: proteintech@ptglab.com
W: ptglab.com

This product is exclusively available under Proteintech Group brand and is not available to purchase from any other manufacturer.

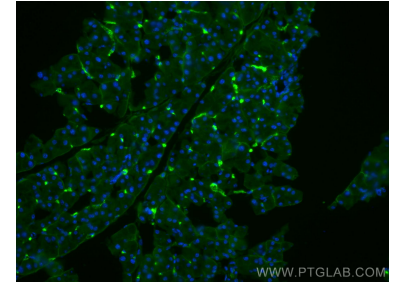
Données de validation sélectionnées



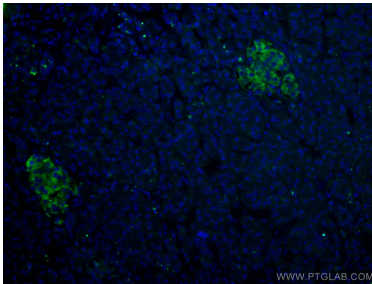
fetal human brain tissue were subjected to SDS PAGE followed by western blot with 66714-1-Ig (RHEB antibody) at dilution of 1:2000 incubated at room temperature for 1.5 hours.



Immunofluorescent analysis of (4% PFA) fixed human pancreas cancer tissue using RHEB antibody (66714-1-Ig, Clone: 2F9H8) at dilution of 1:200 and CoraLite®488-Conjugated AffiniPure Goat Anti-Mouse IgG(H+L).



Immunofluorescent analysis of (4% PFA) fixed mouse pancreas tissue using RHEB antibody (66714-1-Ig, Clone: 2F9H8) at dilution of 1:400 and CoraLite®488-Conjugated AffiniPure Goat Anti-Mouse IgG(H+L).



Immunofluorescent analysis of (4% PFA) fixed human pancreas cancer tissue using RHEB antibody (66714-1-Ig, Clone: 2F9H8) at dilution of 1:200 and CoraLite®488-Conjugated AffiniPure Goat Anti-Mouse IgG(H+L).