

À des fins de recherche uniquement

Anticorps Monoclonal anti-Cytokeratin 5



Numéro de catalogue: 66727-1-Ig **5 Publications**

Informations de base

| | | |
|--|---|--|
| Numéro de catalogue: 66727-1-Ig | Numéro d'acquisition GenBank: BC024292 | Méthode de purification: Purification par protéine G |
| Taille: 150ul , Concentration: 1000 µg/ml by Bradford method using BSA as the standard; | Identification du gène (NCBI): 3852 | CloneNo.: 1A1C5 |
| Hôte: Mouse | Nom complet: keratin 5 | Dilutions recommandées: WB 1:20000-1:100000 IHC 1:5000-1:20000 IF 1:200-1:800 |
| Isotype: IgG1 | MW calculé: 590 aa, 62 kDa | |
| Immunogen Catalog Number: AG24184 | MW observés: 60 kDa | |

Applications

Applications testées:
FC, IF, IHC, WB, ELISA

Demandes citées:
IHC, WB

Spécificité de l'espèce:
Humain, porc, souris

Espèces citées:
Humain, souris

Remarque-IHC: il est suggéré de démasquer l'antigène avec un tampon de TE buffer pH 9,0; (*) À défaut, 'le démasquage de l'antigène peut être effectué avec un tampon citrate pH 6,0.

Contrôles positifs:

WB : cellules HaCaT, cellules A-253, cellules A431, cellules A549, cellules MCF-7, cellules SKOV-3, salive humaine, salive humaine, tissu cutané de porc, tissu cutané de souris

IHC : tissu d'amygdalite humaine, tissu de cancer de la peau humaine, tissu de cancer de l'œsophage humaine, tissu de cancer du col de l'utérus humaine, tissu de cancer du poumon humaine, tissu de cancer du sein humaine, tissu d'hyperplasie mammaire humaine

IF : cellules A431, tissu de cancer de la prostate humaine, tissu de cancer de l'œsophage humaine

Informations générales

Keratins are a large family of proteins that form the intermediate filament cytoskeleton of epithelial cells. Keratin expression is highly regulated, tissue specific, and varies according to cell-state. Type I keratins consist of acidic, low molecular weight proteins with MW ranging from 40 kDa (KRT19) to 64 kDa (KRT9). Type 2 keratins consist of basic or neutral, high molecular weight proteins with MW from 52 kDa (KRT8) to 67 kDa (KRT18). Keratin 5, one 58-kD type II keratin, is coexpressed with a 50-kD keratin 14 in stratified squamous epithelia. Keratin 5, one 58-kD type II keratin, is coexpressed with a 50-kD tyK14 in stratified squamous epithelia.

Publications notables

| Autrice | Pubmed ID | Journal | Application |
|--------------|-----------|----------------|-------------|
| Kui Xiao | 34714841 | PLoS One | WB |
| Mie Naruse | 34912374 | Front Genet | IHC |
| Xin-Xing Lei | 32382038 | Cell Death Dis | WB |

Stockage

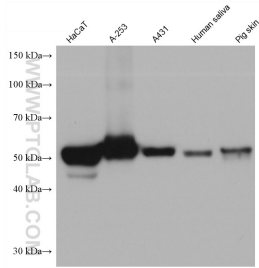
Stockage:
Stocker à -20°C. Stable pendant un an après l'expédition.
Tampon de stockage:
PBS avec azoture de sodium à 0,02 % et glycérol à 50 % pH 7,3
L'aliquotage n'est pas nécessaire pour le stockage à -20C

*** Les 20ul contiennent 0,1% de BSA.

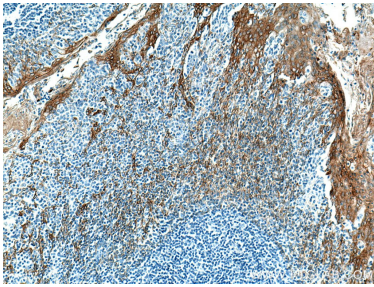
For technical support and original validation data for this product please contact:
T: 1 (888) 4PTGLAB (1-888-478-4522) (toll free in USA), or 1(312) 455-8498 (outside USA)
E: proteintech@ptglab.com
W: ptglab.com

This product is exclusively available under Proteintech Group brand and is not available to purchase from any other manufacturer.

Données de validation sélectionnées



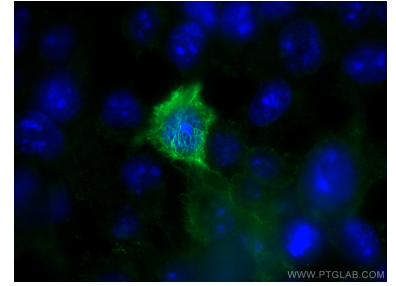
Various lysates were subjected to SDS PAGE followed by western blot with 66727-1-Ig (Cytokeratin 5 antibody) at dilution of 1:100000 incubated at room temperature for 1.5 hours.



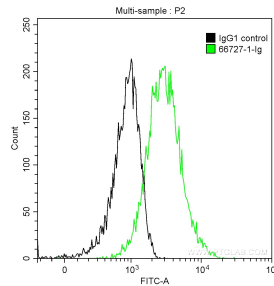
Immunohistochemical analysis of paraffin-embedded human tonsillitis tissue slide using 66727-1-Ig (Cytokeratin 5 antibody) at dilution of 1:100000 (under 10x lens). Heat mediated antigen retrieval with Tris-EDTA buffer (pH 9.0).



Immunohistochemical analysis of paraffin-embedded human tonsillitis tissue slide using 66727-1-Ig (Cytokeratin 5 antibody) at dilution of 1:100000 (under 40x lens). Heat mediated antigen retrieval with Tris-EDTA buffer (pH 9.0).



Immunofluorescent analysis of (-20°C Methanol) fixed A431 cells using Cytokeratin 5 antibody (66727-1-Ig, Clone: 1A1C5) at dilution of 1:400 and CoraLite®488-Conjugated AffiniPure Goat Anti-Mouse IgG(H+L).



1X10⁶ A431 cells were intracellularly stained with 0.2 ug Anti-Human Cytokeratin 5 (66727-1-Ig, Clone:1A1C5) and CoraLite®488-Conjugated AffiniPure Goat Anti-Mouse IgG(H+L) at dilution 1:1000 (green), and 0.2 ug Control Antibody. Cells were fixed with 90% MeOH.