

À des fins de recherche uniquement

Anticorps Monoclonal anti-HIF2 α /EPAS1



Numéro de catalogue: 66731-1-Ig **3 Publications**

Informations de base

Numéro de catalogue: 66731-1-Ig	Numéro d'acquisition GenBank: BC051338	Méthode de purification: Purification par protéine A
Taille: 150ul, Concentration: 1600 µg/ml by Nanodrop and 1000 µg/ml by Bradford method using BSA as the standard;	Identification du gène (NCBI): 2034	CloneNo.: 2F6B12
Hôte: Mouse	Nom complet: endothelial PAS domain protein 1	Dilutions recommandées: WB 1:1000-1:5000 IHC 1:250-1:1000
Isotype: IgG2a	MW calculé: 96 kDa	
Immunogen Catalog Number: AG24886	MW observés: 120 kDa	

Applications

Applications testées: IHC, WB, ELISA	Contrôles positifs: WB : cellules HeLa, cellules HepG2 IHC : tissu de cancer du côlon humain,
Demandes citées: IF, WB	
Spécificité de l'espèce: Humain	
Espèces citées: bovin, Humain	

Remarque-IHC: il est suggéré de démasquer l'antigène avec un tampon de TE buffer pH 9,0; (*) A défaut, 'le démasquage de l'antigène peut être 'effectué avec un tampon citrate pH 6,0.

Informations générales

Endothelial PAS domain-containing protein 1 (EPAS1), also known as Hypoxia-inducible factor 2-alpha (HIF2-alpha, HIF2A), is a transcription factor involved in the induction of oxygen regulated genes. Binds to core DNA sequence 5'-[AG]CGTG-3' within the hypoxia response element (HRE) of target gene promoters. Regulates the vascular endothelial growth factor (VEGF) expression and seems to be implicated in the development of blood vessels and the tubular system of lung. May also play a role in the formation of the endothelium that gives rise to the blood brain barrier. Potent activator of the Tie-2 tyrosine kinase expression. Activation seems to require recruitment of transcriptional coactivators such as CREBBP and probably EP300. Interaction with redox regulatory protein APEX seems to activate CTAD. EPAS1 is expressed in most tissues, with highest levels in placenta, lung and heart. Selectively expressed in endothelial cells.

Publications notables

Autrice	Pubmed ID	Journal	Application
Chen Lv	36325096	Front Vet Sci	WB,IF
Dayan Sun	33279689	Cell Mol Gastroenterol Hepatol	WB
Kaela M Varberg	37563143	Nat Commun	WB,IF

Stockage

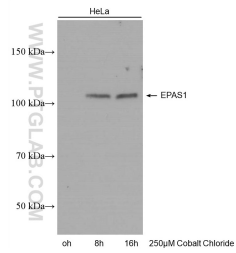
Stockage:
Stocker à -20°C. Stable pendant un an après l'expédition.
Tampon de stockage:
PBS avec azoture de sodium à 0,02 % et glycérol à 50 % pH 7,3
L'aliquotage n'est pas nécessaire pour le stockage à -20C

*** Les 20ul contiennent 0,1% de BSA.

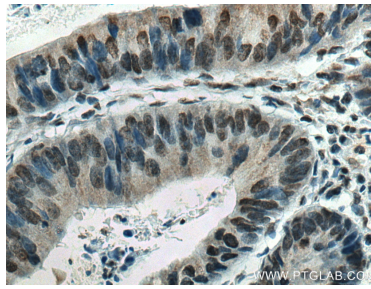
For technical support and original validation data for this product please contact:
T: 1 (888) 4PTGLAB (1-888-478-4522) (toll free in USA), or 1(312) 455-8498 (outside USA) E: proteintech@ptglab.com W: ptglab.com

This product is exclusively available under Proteintech Group brand and is not available to purchase from any other manufacturer.

Données de validation sélectionnées



untreated and cobalt chloride treated HeLa cells were subjected to SDS PAGE followed by western blot with 66731-1-Ig (EPAS1 antibody) at dilution of 1:5000 incubated at room temperature for 1.5 hours.



Immunohistochemical analysis of paraffin-embedded human colon cancer tissue slide using 66731-1-Ig (EPAS1 antibody) at dilution of 1:500 (under 40x lens). Heat mediated antigen retrieval with Tris-EDTA buffer (pH 9.0).